



**I.E.D.
Installations
Limited**

Our Business Services include...

Electrical	Access Control
Data	CCTV
Voice	Mechanical
Electrical Testing	Building

Committed to Service

www.ied-uk.com

0151 427 8500

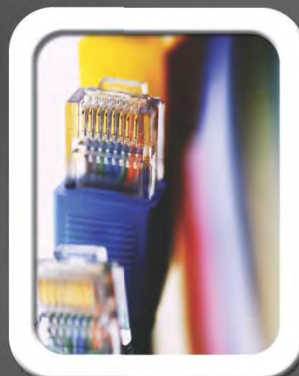
Case Studies



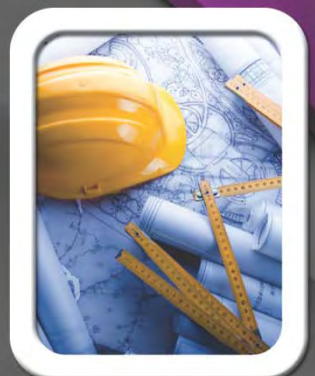
Electrical



Mechanical



Voice/Data



Building



I.E.D. Installations Limited

Statement



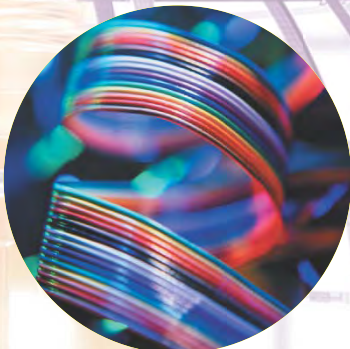
IED Installations were established in 1994, and have sustained a continued growth year on year, this being due to our commitment to our client base and staff.

Our focus is to provide a service that meets our clients and future clients satisfaction with regards to professional approach, quality, delivery, health and safety and value for money.

IED has grown into a recognised construction service provider within the North West, this being due to our commitment to provide a flexible approach to the services we provide to our customers and our forward planning.



Our approach to all projects is to work as a team with the client and his professional team to deliver a quality project and within budget. This is achieved by our openness and technical abilities within our organisation to look at each individual project with regards to delivery, valued engineering, build ability and programming.



We employ over 50 operatives with many years of experience within the construction industry and have a very stringent training programme for all our operatives / apprentices with regard to their technical and health and safety training. The range of services we can provide are Mechanical, Electrical, Voice and Data, Test and Inspection, Planned Preventative Maintenance, Project Management and Construction Services.

Our client base ranges from Health, Education, Commercial, Industrial and the Private Sector.

Sectors of Work

Private, Commercial, Industrial, Health, Education, Chemical, Pharmaceutical, Paper, Leisure, Construction, Water and Local and Government Authorities.

Company Memberships

The company is approved by the following organisations, which verify the condition and standard of work carried out in the sectors and the industry we work in.

- National Inspection Council for Electrical Installation Contracting
- The Electrical Contractors Association
- Telecommunications Industry Association
- Fibre Optic Industry Association
- Constructionline
- North West Consortium
- Joint Industries Board
- Contractors Health & Safety Scheme
- Achilles
- Safe Contractor

Case Studies

These case studies showcase the services that I.E.D. can provide and also a selection of projects that I.E.D. Installations has completed.

Electrical

We provide a full range of electrical, fire alarm and lighting services including HVAC wiring and cable management.

Voice / Data

We provide an extensive scope of network design & installation, fibre optic backbone cabling and more.

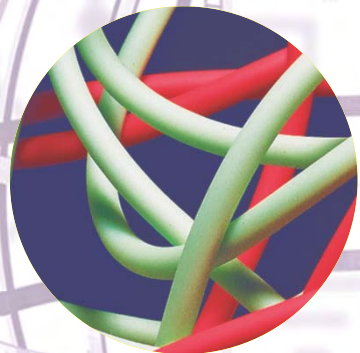
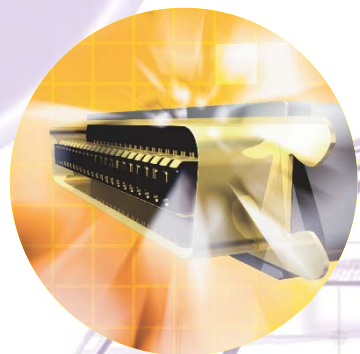
Mechanical

We offer a full range of mechanical services, including Air Conditioning, Sanitation & Plumbing.

Building

I.E.D. also provide a list of professional building and refurbishment services.

<http://www.ied-uk.com/services.html>





**I.E.D.
Installations
Limited**

**Committed to
Service**

ACRE MILL, HUDDERSFIELD

- **Project Value: £1,100,000**
- **Project Type: Refurbishment**
- **Project Aim: Upgrade of Former Mill**
- **Project Completion: December 2014**

ACRE MILL, HUDDERSFIELD

I.E.D Installations designed, supplied, installed tested and commissioned the full electrical installation works at Acre Mill Huddersfield. Working in co-ordination with John Turner construction and Jefferson Sheard architects, we installed a complete system to suit the client's needs and requirements.

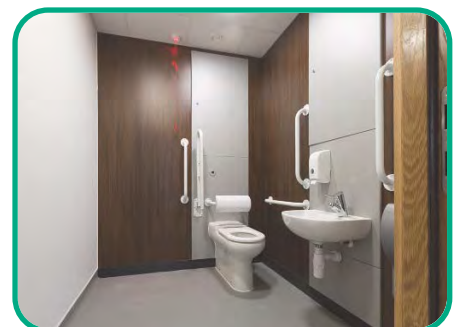
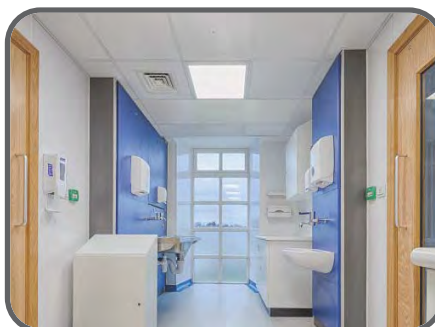
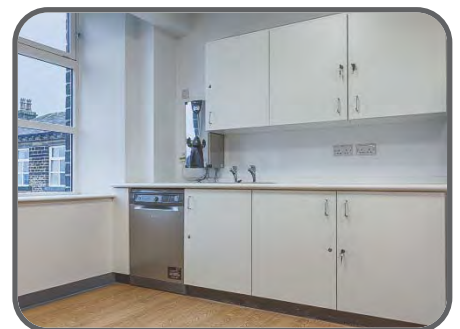
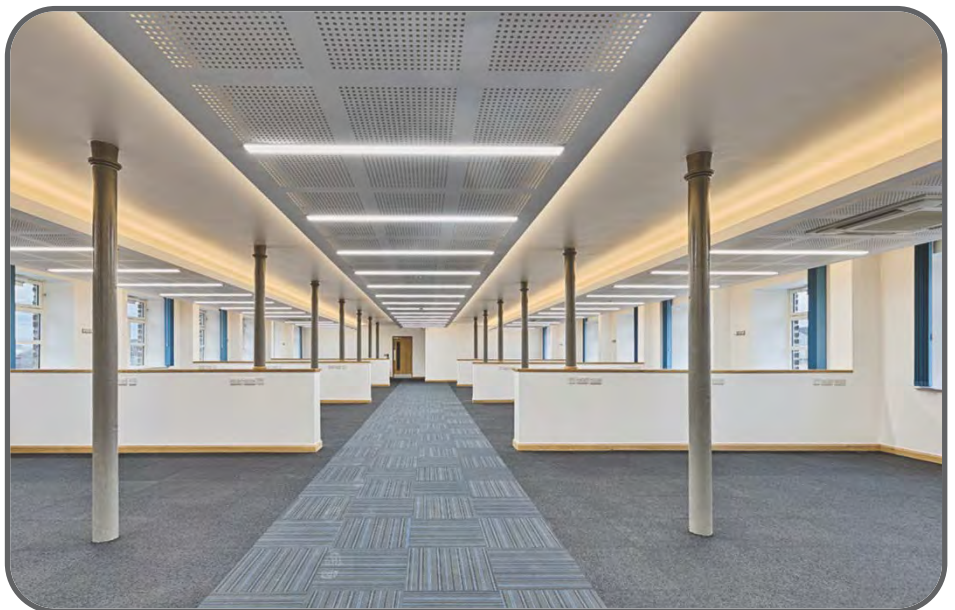
Works carried out included, but were not limited to:-

New LV distribution system and main switch panel, new 150kVa standby generator, new 8kVa UPS system, complete small power and lighting installation, new emergency lighting control system, new fire alarm system, new data installation network, new staff attack and nurse monitoring system, new intruder alarm system, new CCTV and Access control system. Construction works were completed within programme restraints.

The projects' aims were:

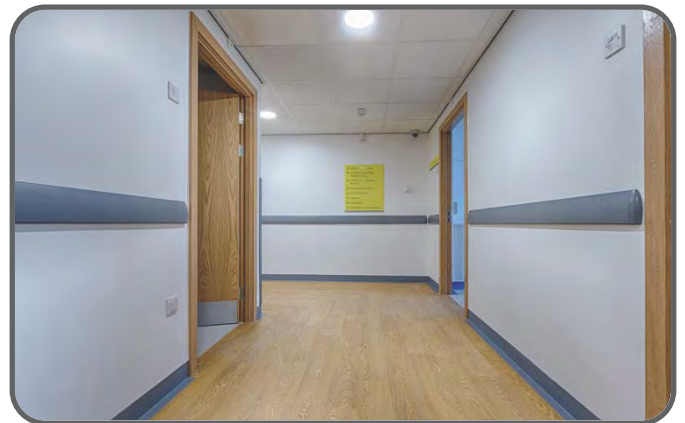
- Refurbishment of Redundant Mill building into new NHS offices and walk in centre
- Provide new modern facilities for staff and patients and Huddersfield and Calderdale trust

ACRE MILL, HUDDERSFIELD





I.E.D.Installations Limited - Committed to Service



REFURBISHMENT OF ACRE MILL, HUDDERFIELD



I.E.D.
Installations
Limited

Committed to
Service

PLAZA BUILDING, LIVERPOOL

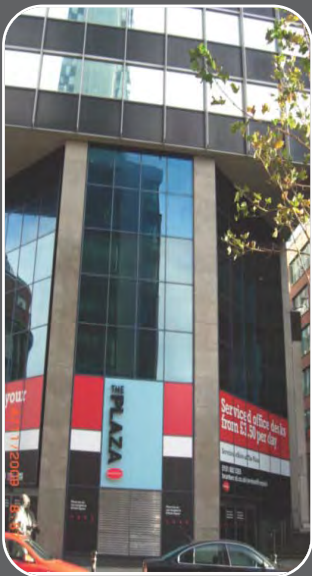
- **Project Value: £1 MILLION**
- **Project Type: Office Department**
- **Project Aim: Refurbishment**
- **Project Completion: October 2008**

PLAZA BUILDING

The installation of sub main distribution and the electrical services to open plan office areas on eight floors within a multi storey occupied office block had power and lighting installed generally to a high technical specification.

A lighting control system is fitted to allow for the dimming and daylight detection for energy efficiency.

- **Mains Distribution**
- **General Lighting**
- **Emergency Lighting**
- **LV Power**
- **Cable Management**



PLAZA BUILDING, LIVERPOOL CITY CENTRE



Main entrance



Lobby and reception area



Meeting rooms



I.E.D.
Installations
Limited

Committed to
Service

ST. MONICA'S HIGH SCHOOL, PRESTWICH

➤ **Project Value: £700,000.00**

➤ **Project Type: Education**

➤ **Project Aim: New Build**

➤ **Project Completion: July 2011**

ST. MONICA'S HIGH SCHOOL

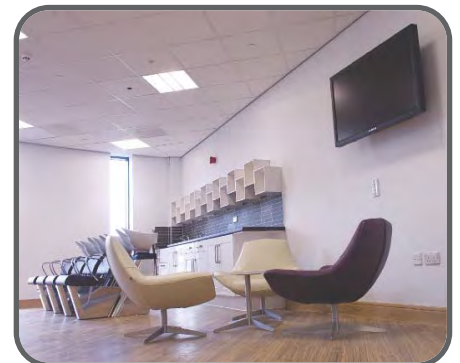
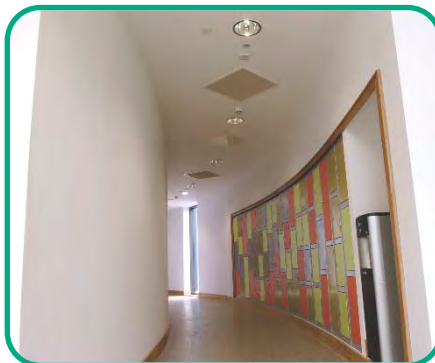
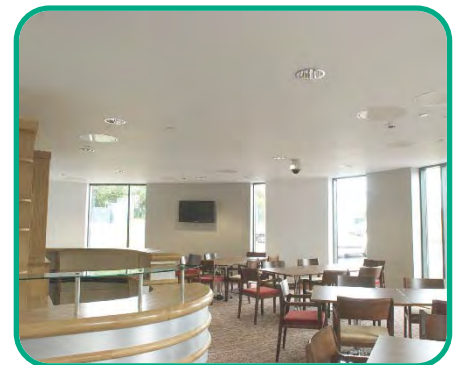
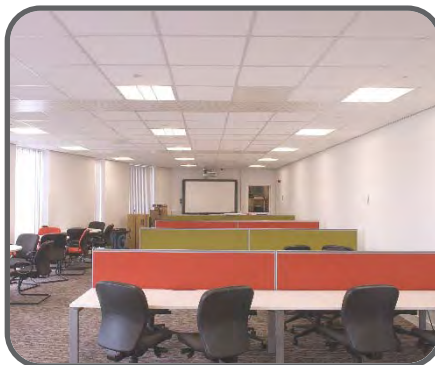
A new school within the Prestwich area with all aspects of electrical and IT services fitted to allow for the school to run in a functional and secure manner. The school is of a different but eye catching design typically of two rugby balls entwined.

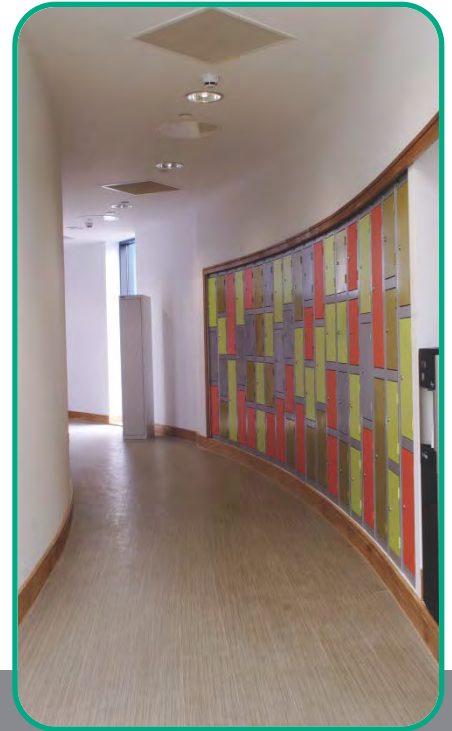
The two storey building has feature lighting and general classrooms have a dimmable specialist system. A biometric system was introduced for people counting to relieve stressful registrations and for safety.

- ❖ Mains Distribution
- ❖ General Lighting
- ❖ Emergency Lighting
- ❖ LV Power
- ❖ Fire Alarms
- ❖ Cable Management
- ❖ Lightning Protection
- ❖ Door & Video Access
- ❖ Pan & Tilt Cameras
- ❖ Voice & Data System
- ❖ Public Address System
- ❖ TV/Satellite System

ST.MONICA'S HIGH SCHOOL, PRESTWICH

The images below and overleaf illustrate St. Monica's High School on project completion.





I.E.D. Installations Limited - Committed to Service



ST.MONICA'S HIGH SCHOOL, PRESTWICH, MANCHESTER.



I.E.D.
Installations
Limited

Committed to
Service

KIRKBY CIVIC SUITE

- **Project Value: £700,000.00**
- **Project Type: Local Government**
- **Project Aim: Refurbishment**
- **Project Completion: 2014**

KIRKBY CIVIC SUITE

This project consisted of the complete refurbishment of the existing Kirkby Civic Suite which was then retitled the Kirkby Centre.

The building is situated in the town centre and was formerly an entertainment venue but was transformed into a One Stop Shop, Adult Disability Centre, Adult Library, Childrens Library, Art Gallery, Archive Store and Café

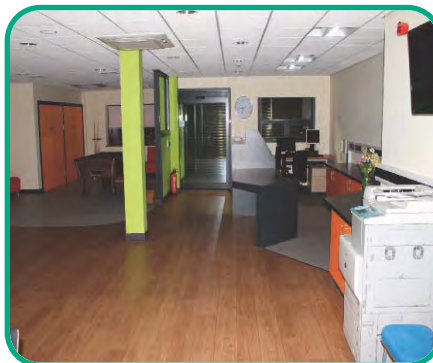
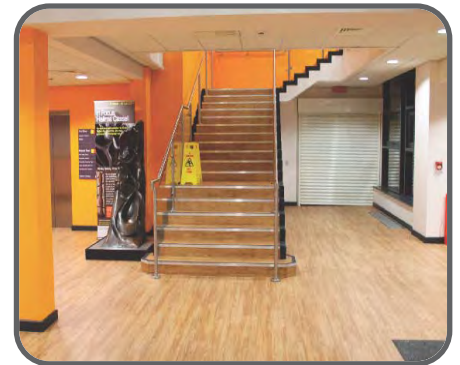
- ❖ Mains Distribution
- ❖ General Lighting
- ❖ Emergency Lighting
- ❖ LV Power
- ❖ Fire Alarms
- ❖ Small Power
- ❖ Intruder Alarm
- ❖ Door Access
- ❖ Voice and Data Systems
- ❖ CCTV
- ❖ Cable Management
- ❖ TV System

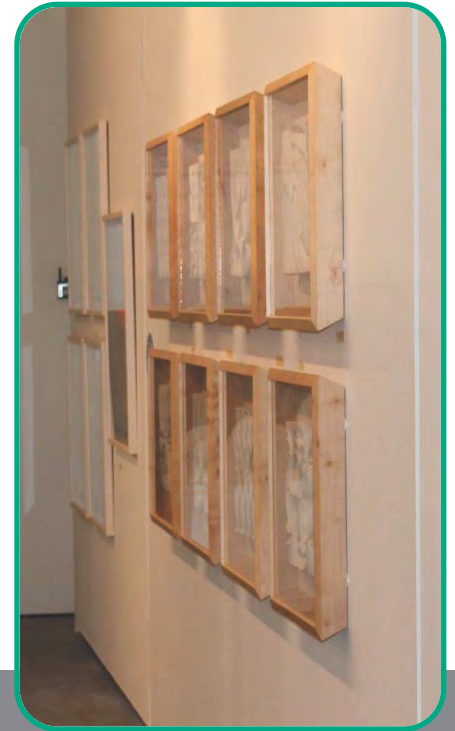


Knowsley Council

KIRKBY CIVIC SUITE, KNOWSLEY.

The images below and overleaf illustrate Kirkby Civic Suite on project completion.





I.E.D. Installations Limited - Committed to Service



KIRKBY CIVIC SUITE KNOWSLEY



**I.E.D.
Installations
Limited**

**Committed to
Service**

LSTM WOLFSON BUILDING

- **Project Value: £600,000.00**
- **Project Type: Refurbishment**
- **Project Aim: Remodelling of Building**
- **Project Completion: October 2015**

WOLFSON BUILDING

The project consisted of the complete refurb of existing blocks of flats which were completely stripped out and remodelled to form offices and open working areas.

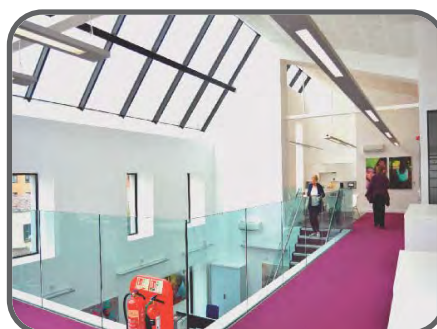
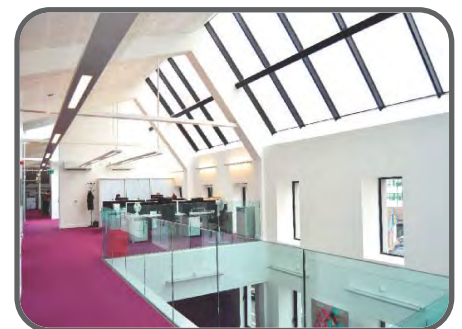
A new substation was installed and a new switchroom created on the ground floor

Containment installed throughout the building.

- DB's installed to each floor
- Lighting & power circuits to all areas
- Linear lighting installed to all areas
- A structured IT cable installation
- Fire alarm system
- Gas suppression system
- CCTV and door access
- External lighting
- Lightning protection

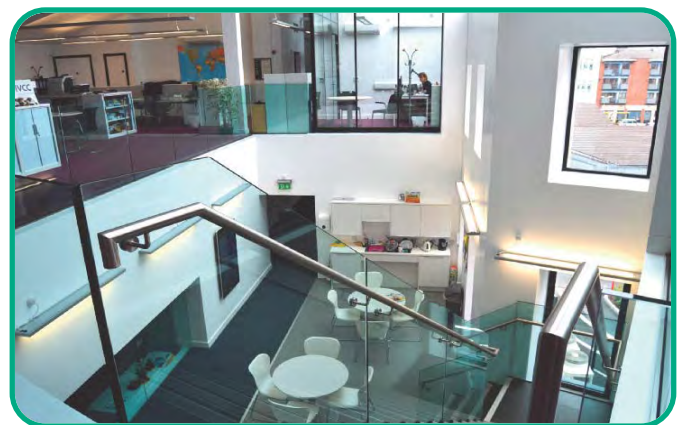
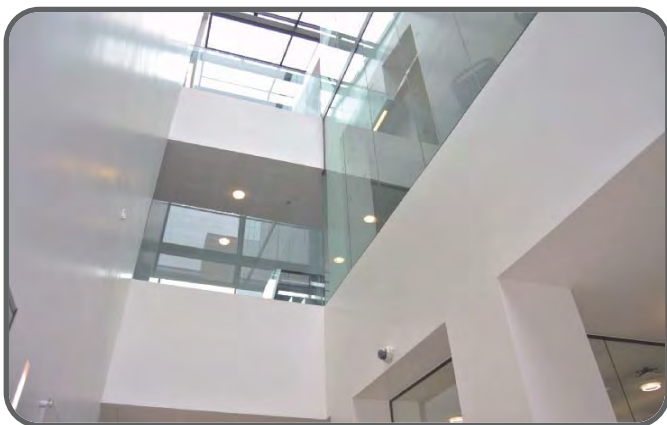
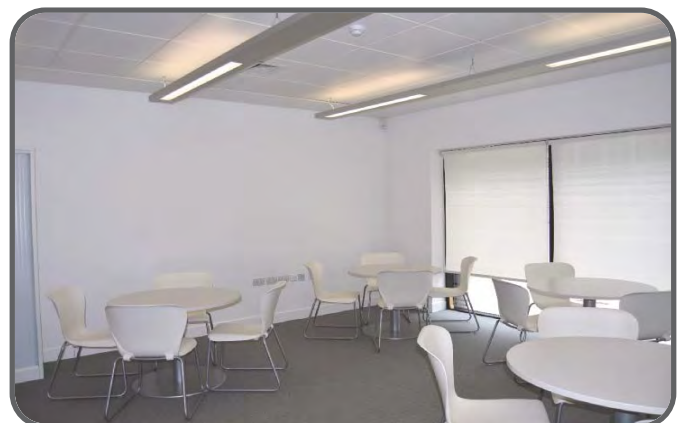
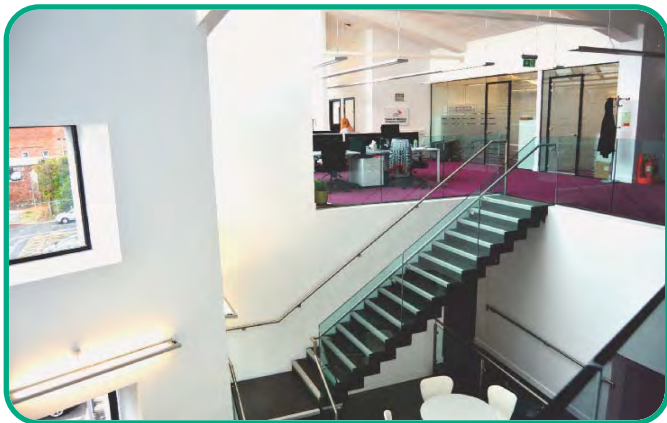


LIVERPOOL SCHOOL OF TROPICAL MEDICINE





I.E.D.Installations Limited - Committed to Service



LIVERPOOL SCHOOL OF TROPICAL MEDICINE - WOLFSON BUILDING



**I.E.D.
Installations
Limited**

**Committed to
Service**

UNIVERSITY OF LIVERPOOL

- **Project Value: £600,000.00**
- **Project Type: Academic**
- **Project Aim: Refurbishment**
- **Project Completion: 2013**

SIRE BUILDING

IED were appointed as the preferred electrical contractor for this project for the services required under the formal tender process.

The works were undertaken throughout the complex during the summer of 2013.

The project was delivered to the client as per the design and the university guidelines.

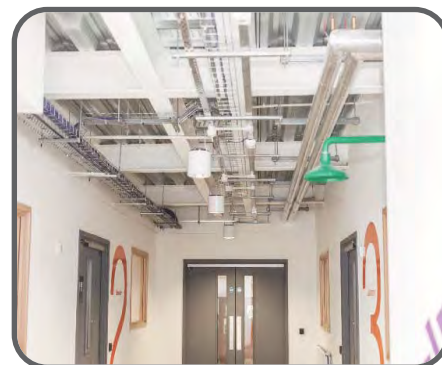
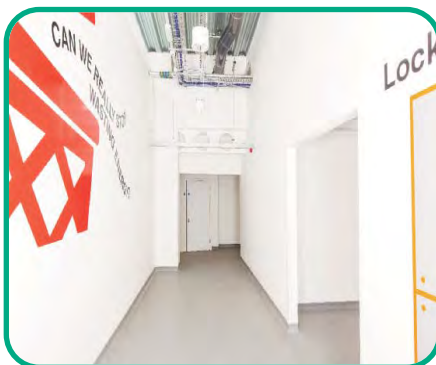
- ❏ **Mains Distribution**
- ❏ **General Lighting**
- ❏ **Emergency Lighting**
- ❏ **LV Power**
- ❏ **Fire Alarms**
- ❏ **Cable Management**
- ❏ **Door & Video Access**
- ❏ **Voice & Data**
- ❏ **Security System**



UNIVERSITY OF
LIVERPOOL

UNIVERSITY OF LIVERPOOL - SIRE BUILDING

The images below and overleaf illustrate The Sire Building on project completion.





I.E.D. Installations Limited - Committed to Service



UNIVERSITY OF LIVERPOOL - SIRE BUILDING

AAH PHARMACEUTICALS, NEXUS POINT

- **Project Value: £800,000.00**
- **Project Type: Pharmaceuticals**
- **Project Aim: Extension**
- **Project Completion: June 2012**

KINGSWAY CAMPUS, UNIVERSITY OF CHESTER

- **Project Value: £610,000.00**
- **Project Type: Education**
- **Project Aim: Refurbishment**
- **Project Completion: Sept 2007**

AAH PHARMACEUTICALS

An extension to the existing property allowing for expansion of a thriving business.

The installation of new switchgear to accommodate the new mezzanine floor and additional power requirements for more machinery and storage.

The introduction of a new generator set to protect the electrical services in case of power loss installed externally to the unit.

- ❑ Mains Distribution
- ❑ General Lighting
- ❑ Emergency Lighting
- ❑ LV Power
- ❑ Fire Alarms
- ❑ Cable Management
- ❑ Lightning Protection
- ❑ Pan & Tilt Cameras
- ❑ Voice & Data System
- ❑ Generator Installation

**KINGSWAY CAMPUS, UNIVERSITY OF CHESTER**

IED were appointed as the preferred electrical contractor for this project for the services required under the formal tender process.

The works were undertaken throughout the complex during the summer of 2007.

The project was delivered to the client as per the design and the university guidelines. Kingsway Campus is a specialist in drama, business and media studies.

The classrooms, art rooms, dance studios and performance stage facilities were introduced with a high specification.

- ❑ Mains Distribution
- ❑ General Lighting
- ❑ Emergency Lighting
- ❑ LV Power
- ❑ Fire Alarms
- ❑ Cable Management
- ❑ Lightning Protection
- ❑ Pan & Tilt Cameras
- ❑ Voice & Data System





I.E.D.
Installations
Limited

Committed to
Service

WELSH ASSEMBLY, LLANDUDNO, WALES

- **Project Value: £610,000.00**
- **Project Type: Government**
- **Project Aim: New Build**
- **Project Completion: August 2010**

WELSH ASSEMBLY

This project has a high profile political significance as the recently formed Welsh Assembly moved in to its new home.

The building is situated within the picturesque surroundings of Llandudno.

The facility has the usual office type areas inclusive of the technical lighting and power expected to aid the running of a patriotic nation.

The building itself has a unique shape to it and is lit up well with the decorative external lighting installed.

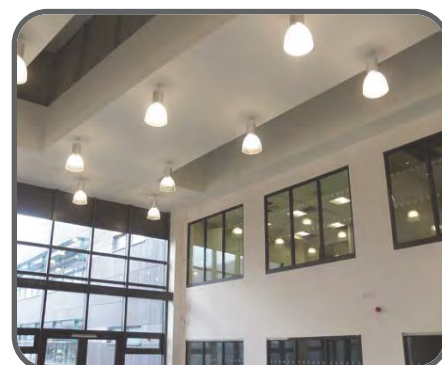
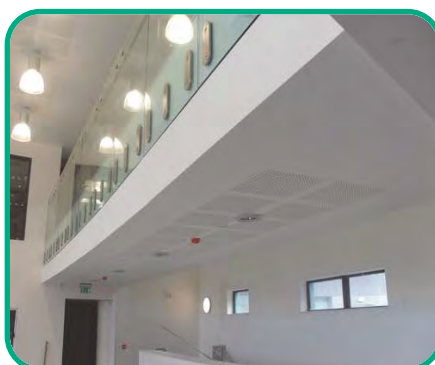
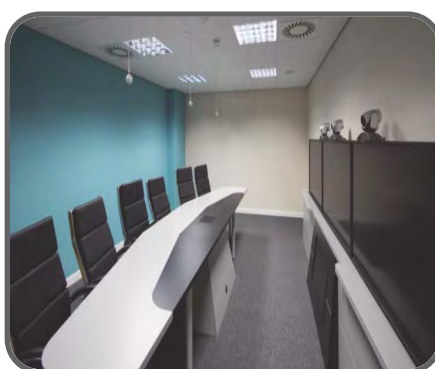
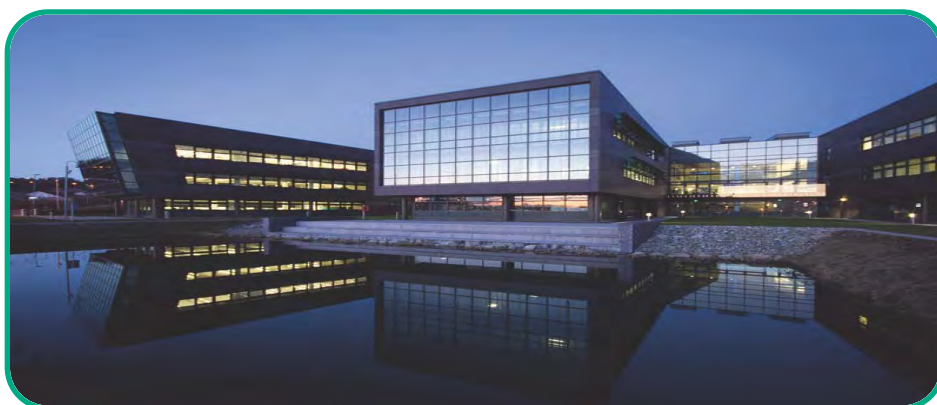
- ❏ Mains Distribution
- ❏ General Lighting
- ❏ Emergency Lighting
- ❏ LV Power
- ❏ Cable Management



Llywodraeth Cynulliad Cymru
Welsh Assembly Government

WELSH ASSEMBLY, LLANDUDNO, WALES.

The images below illustrate The Welsh Assembly on project completion.





I.E.D.
Installations
Limited

Committed to
Service

OUR LADY & ST. JOHN COLLEGE

- **Project Value: £500,000.00**
- **Project Type: Education**
- **Project Aim: New Build**
- **Project Completion: Sept 2009**

OUR LADY & ST. JOHN

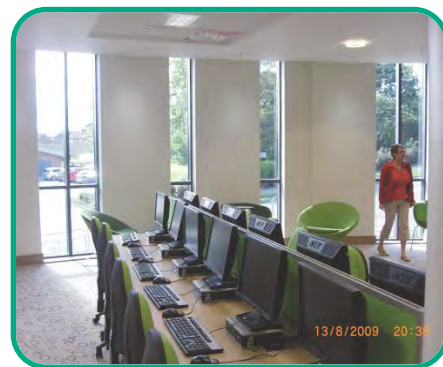
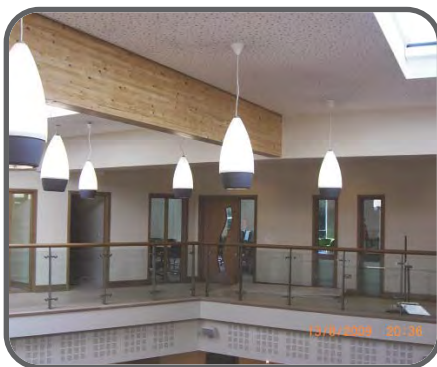
A new school project in Blackburn, Lancashire, fitted with all aspects of electrical and IT services.

All of the items installed give the school state of the art facilities for the teaching methods required to give pupils the future they choose.

- ❖ **Mains Distribution**
- ❖ **General Lighting**
- ❖ **Emergency Lighting**
- ❖ **LV Power**
- ❖ **Fire Alarms**
- ❖ **Cable Management**
- ❖ **Lightning Protection**
- ❖ **Door & Video Access**
- ❖ **Pan & Tilt Cameras**
- ❖ **Voice & Data System**

OUR LADY & ST. JOHN COLLEGE, BLACKBURN.

The images below illustrate The College on project completion.





**I.E.D.
Installations
Limited**

**Committed to
Service**

SHORELINES

- **Project Value: £450,000.00**
- **Project Type: Office Development**
- **Project Aim: Refurbishment**
- **Project Completion: Dec 2012**

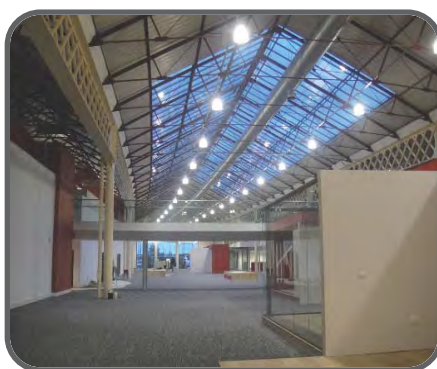
SHORELINES

Shorelines, named after the road on which it resides. The existing units were transformed into developed office areas sectioned into two as per the landlords specification.

- ❑ Mains Distribution
- ❑ General Lighting
- ❑ Emergency Lighting
- ❑ LV Power
- ❑ Fire Alarms
- ❑ Cable Management
- ❑ Lightning Protection
- ❑ Door & Video Access
- ❑ Pan & Tilt Cameras
- ❑ TV/Satellite System

SHORELINES

The images below illustrate Shorelines on project completion.





**I.E.D.
Installations
Limited**

Committed to Service

I.E.D. Installations Limited - Committed to Service



SHORELINES, BIRKENHEAD.

PHARMACEUTICALS, LANGLEY

- **Project Value: £400,000.00**
- **Project Type: Pharmaceuticals**
- **Project Aim: Refurbishment**
- **Project Completion: August 2005**

CHESHIRE COUNTY COUNCIL

- **Project Value: £360,000.00**
- **Project Type: Residential**
- **Project Aim: New Build**
- **Project Completion: May 2009**

AAH PHARMACEUTICALS, LANGLEY

This project consisted of a new manually controlled lighting scheme throughout the property. The lighting was protected by new switchgear and tested completely to the IEE (BS7671) regulations.

- ❑ Mains Distribution
- ❑ General Lighting
- ❑ Emergency Lighting
- ❑ LV Power
- ❑ Fire Alarms
- ❑ Cable Management

**CHESHIRE COUNTY COUNCIL**

IED were appointed as the preferred electrical contractor for this project for the services required under the formal tender process.

This project was part of a scheme to provide independent living for the elderly across Cheshire.

This site provided 71 apartments comprising of living room, kitchen, bedroom and toilet / en suite.

Within the communal areas they had shared facilities such as lounge areas, hairdressers, shops, restaurant, laundry and external seating areas.

- ❑ Mains Distribution
- ❑ General Lighting
- ❑ Emergency Lighting
- ❑ LV Power
- ❑ Cable Management



I.E.D.
Installations
Limited

Committed to
Service

UNIVERSITY OF LIVERPOOL

- **Project Value: £350,000.00**
- **Project Type: Academic**
- **Project Aim: Refurbishment**
- **Project Completion: 2013**

SCHOOL OF ARTS

IED were appointed as the preferred electrical contractor for this project for the services required under the formal tender process.

The works were undertaken throughout the complex during the summer of 2013.

The project was delivered to the client as per the design and the university guidelines.

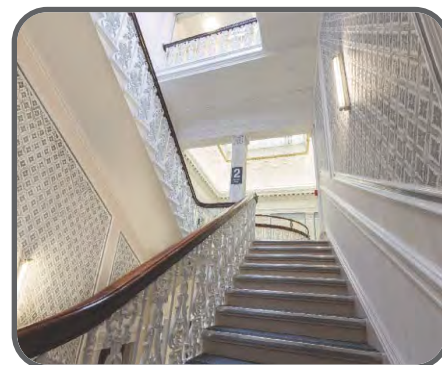
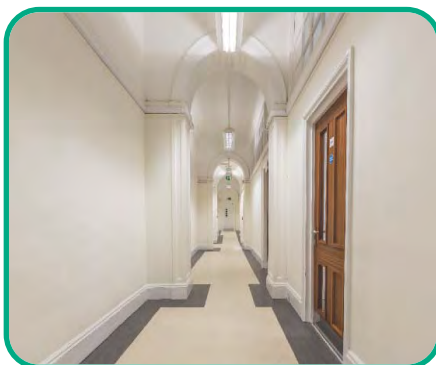
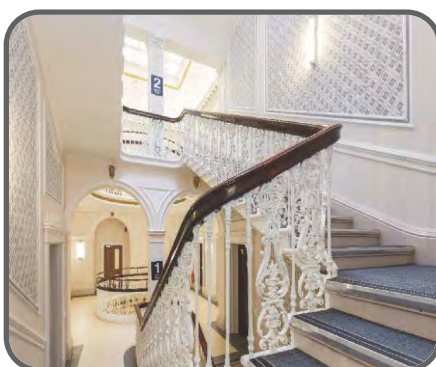
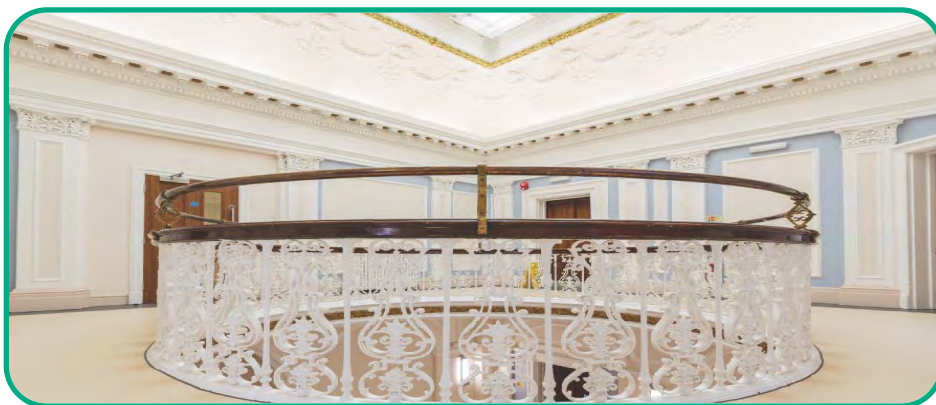
- ❏ Mains Distribution
- ❏ General Lighting
- ❏ Emergency Lighting
- ❏ LV Power
- ❏ Fire Alarms
- ❏ Cable Management
- ❏ Voice & Data
- ❏ Security System

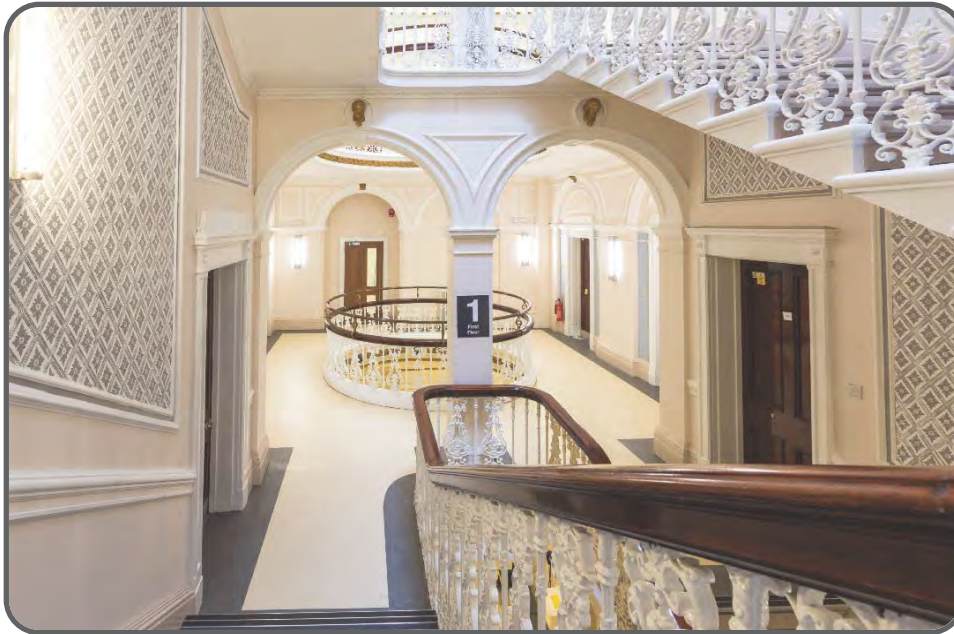


UNIVERSITY OF
LIVERPOOL

UNIVERSITY OF LIVERPOOL SCHOOL OF ARTS

The images below and overleaf illustrate The School of Arts on project completion.





**I.E.D.
Installations
Limited**

Committed to Service

I.E.D. Installations Limited - Committed to Service



UNIVERSITY OF LIVERPOOL SCHOOL OF ARTS



**I.E.D.
Installations
Limited**

**Committed to
Service**

ROYAL UNIVERSITY HOSPITAL

➤ **Project Value: £350,000.00**

➤ **Project Type: Healthcare**

➤ **Project Aim: Refurbishment**

➤ **Project Completion: June 2011**

RADIOLOGY DEPARTMENT

ROYAL UNIVERSITY HOSPITAL - RADIOLOGY DEPT.

The remodelling of the existing radiology area to allow for the new systems for x ray, and scanning.

The electrical systems were derived from existing distribution services to accept the new requirements to the client's standards.

- | | |
|----------------------|--------------------------|
| ❑ Mains Distribution | ❑ Door & Video Access |
| ❑ General Lighting | ❑ Pan & Tilt Cameras |
| ❑ Emergency Lighting | ❑ Voice & Data System |
| ❑ LV Power | ❑ Nurse/Staff Attack |
| ❑ Fire Alarms | ❑ TV/Satellite System |
| ❑ Cable Management | ❑ Gas/Medical Gas System |

230v and 400v systems were installed to receive the specialist kit from radiology suppliers.

The Royal Liverpool and
Broadgreen University Hospitals



NHS Trust





**I.E.D.
Installations
Limited**

**Committed to
Service**

ROYAL LIVERPOOL HOSPITAL

- **Project Value: £350,000.00**
- **Project Type: Healthcare**
- **Project Aim: Refurbishment**
- **Project Completion: June 2011**

CRITICAL CARE UNIT

IED were appointed as the preferred electrical contractor for this project for the services required under the formal tender process.

The removal of the existing ward and clinic areas services were carried out to allow for the refurbishment to include the extended Intensive Care Department.

The works was completed in phases to allow the hospital to get early usage to alleviate emergency congestion.

The Critical Care Unit was increased by a further seven isolated positions and technically is advanced to give ultimate care to the patients.

The electrical and associated specialist systems were delivered with the particular requirements that the department very much needed.

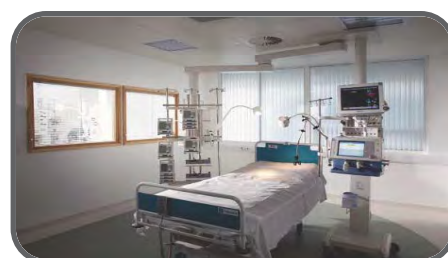
Individual bedhead medical services, isolation ward security, scene setting lighting and technically supported power supply systems (IPS) were installed as part of the area design.

- ❖ Mains Distribution
- ❖ General Lighting
- ❖ Emergency Lighting
- ❖ LV Power
- ❖ Fire Alarms
- ❖ Cable Management
- ❖ Door & Video Access

ROYAL LIVERPOOL HOSPITAL - CRITICAL CARE UNIT

The images below illustrate The Critical Care Unit on project completion.

The Royal Liverpool and Broadgreen University Hospitals
NHS Trust



- ❖ Pan & Tilt Cameras
- ❖ Voice & Data System
- ❖ Nurse/Staff Attack
- ❖ TV/Satellite System



I.E.D.
Installations
Limited

Committed to
Service

LANCASTER UNIVERSITY

➤ **Project Value: £300,000.00**

➤ **Project Type: Education**

➤ **Project Aim: New Build**

➤ **Project Completion: June 2008**

LANCASTER UNIVERSITY

IED were appointed as the preferred electrical contractor for this project for the services required under the formal tender process.

The building is a two storey state of the arts teaching block within the confines of Lancaster university main campus.

The installation comprised of a addressable dali lighting control system that also controlled the audio visual teaching walls and the mechanical ventilation systems.

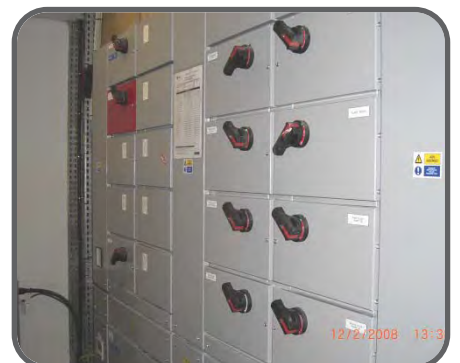
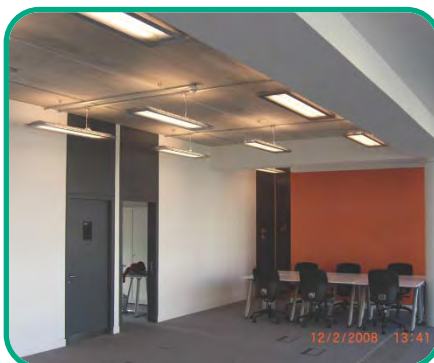
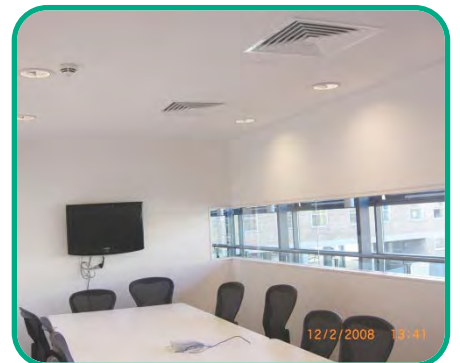
The life safety systems I.E. Fire alarms, disabled refuge were are configured to sit on the existing university site network, reporting back to a gatehouse over one mile away.

- ❏ Mains Distribution
- ❏ General Lighting
- ❏ Emergency Lighting
- ❏ LV Power
- ❏ Fire Alarms
- ❏ Cable Management
- ❏ Lightning Protection
- ❏ Door & Video Access
- ❏ Pan & Tilt Cameras
- ❏ Voice & Data System



LANCASTER UNIVERSITY, POST GRAD STATISTICS

The images below illustrate the Post Grad Statistics Dept. on project completion.





I.E.D.
Installations
Limited

Committed to
Service

HAROLD COHEN LIBRARY

- Project Value: £310,000.00
- Project Type: Refurbishment
- Project Aim: Upgrading student facilities
- Project Completion: October 2014

HAROLD COHEN LIBRARY

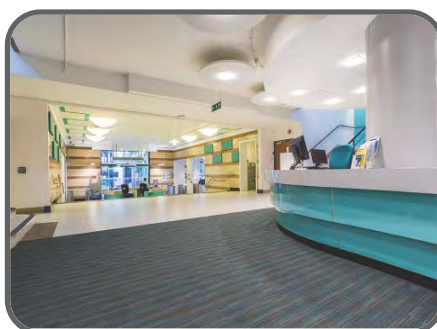
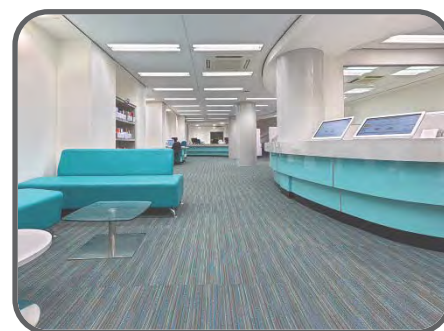
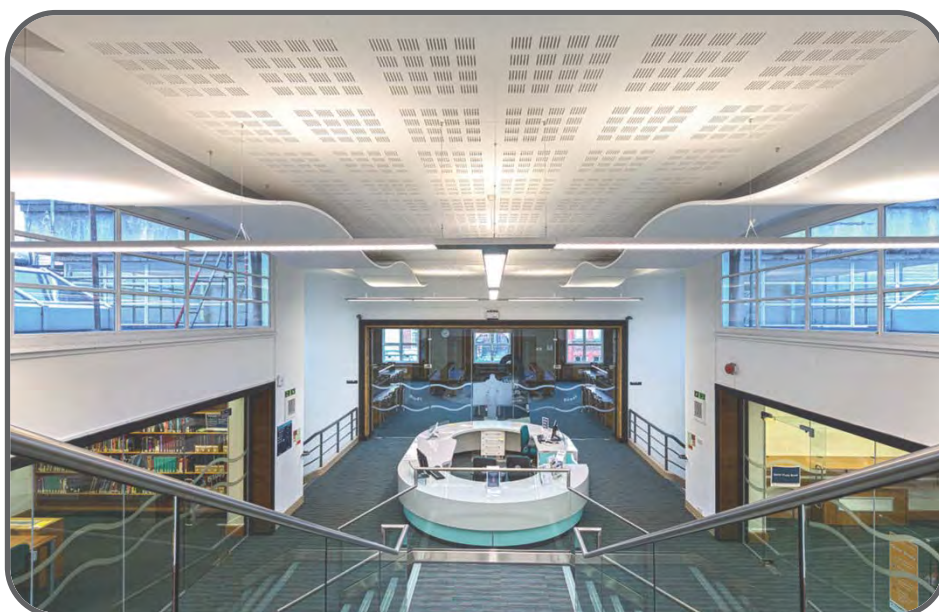
I.E.D Installations carried out electrical works to the ground floor, 1st floor, stack 6, stack 7 and stack 8 of Harold Cohen. All other parts of the library remained live whilst works were ongoing.

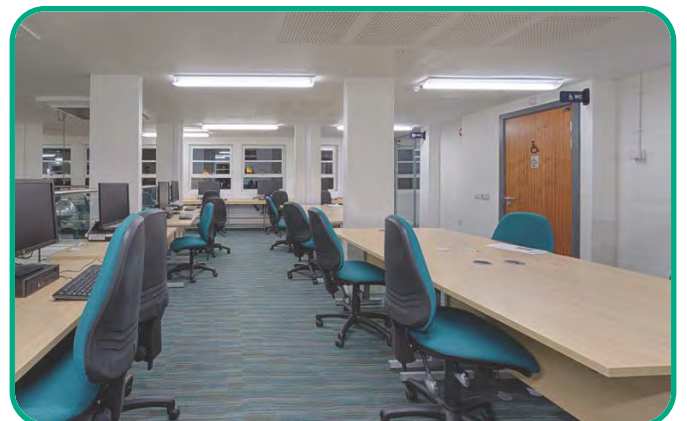
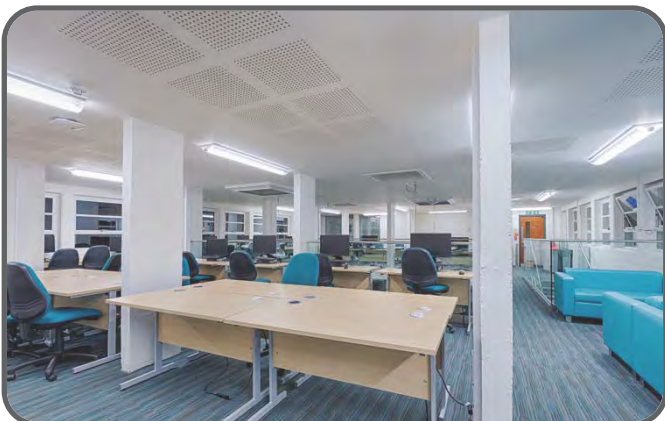
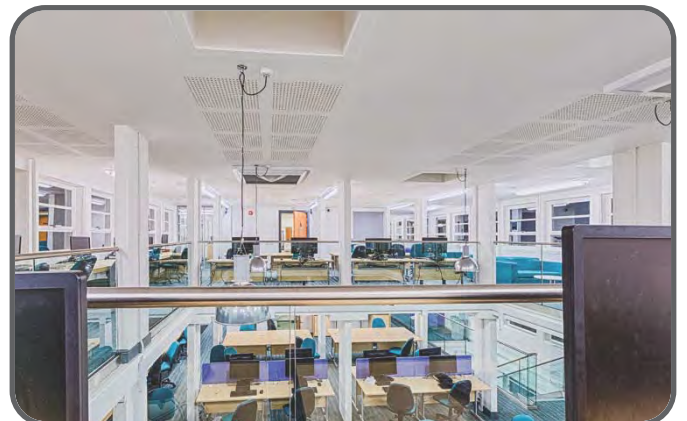
We installed new power, lighting, data, fire alarm system and CCTV system to the refurbished areas. Working for main contractor Aspect construction in close co-ordination with University of Liverpool and Mouchel.

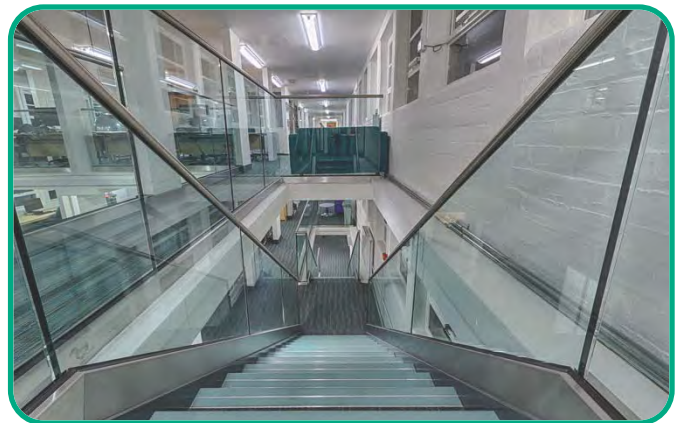
The works consisted:

- Mains Distribution
- General Lighting
- Emergency Lighting
- LV Power
- Fire Alarms
- CCTV
- Voice and Data

UNIVERSITY OF LIVERPOOL HAROLD COHEN LIBRARY

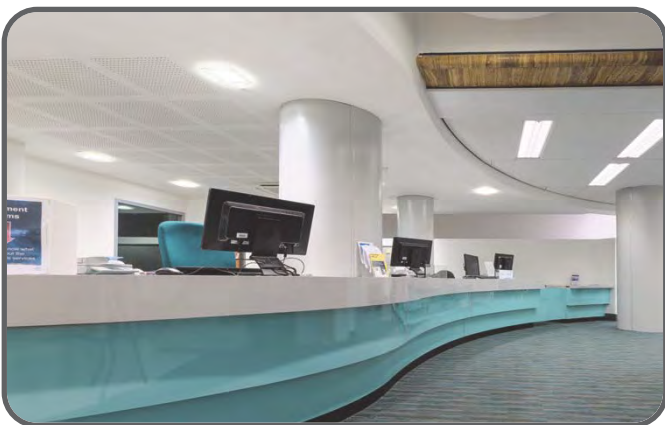
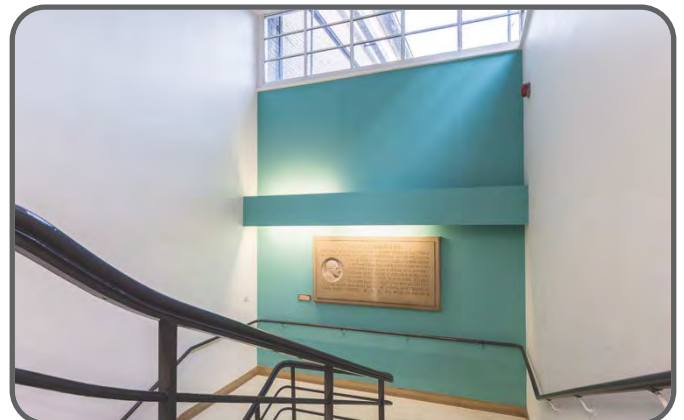
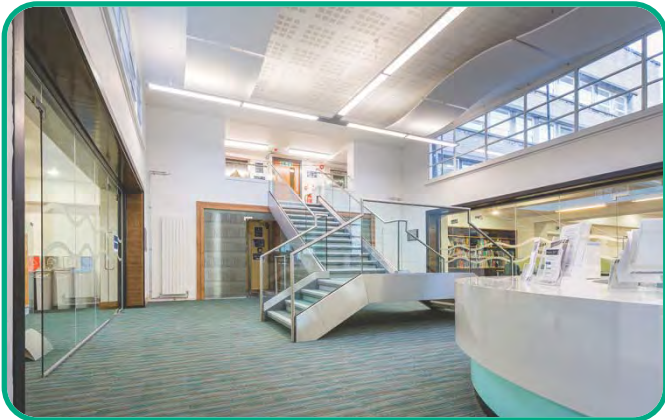








I.E.D.Installations Limited - Committed to Service



UNIVERSITY OF LIVERPOOL HAROLD COHEN LIBRARY



**I.E.D.
Installations
Limited**

**Committed to
Service**

DUNES LEISURE CENTRE, SOUTHPORT

- Project Value: £300,000.00
- Project Type: Sports & Leisure
- Project Aim: New Build
- Project Completion: June 2007

DUNES LEISURE CENTRE

The Dunes is a multi pool swimming and gym facility in Southport.

The electrical services installation was undertaken with IP ratings and COSHH regulations at the forefront of the design.

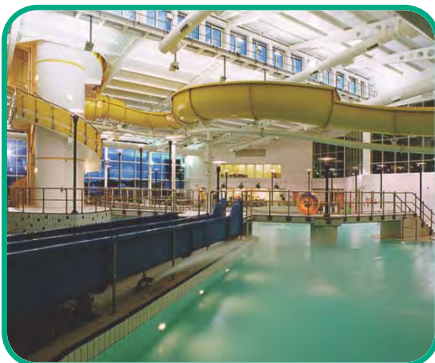
All services to the pool and the public areas were installed to the clients requirements and architectural aesthetics.

- ❏ Mains Distribution
- ❏ General Lighting
- ❏ Emergency Lighting
- ❏ LV Power



DUNES LEISURE CENTRE, SOUTHPORT

The images below illustrate Dunes Splash World on completion.





I.E.D.
Installations
Limited

Committed to
Service

ALL SAINTS SCHOOL, UPTON.

- **Project Value: £300,000.00**
- **Project Type: Education**
- **Project Aim: New Build**
- **Project Completion: January 2011**

ALL SAINTS SCHOOL, UPTON.

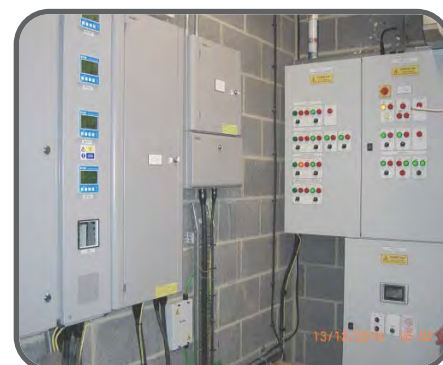
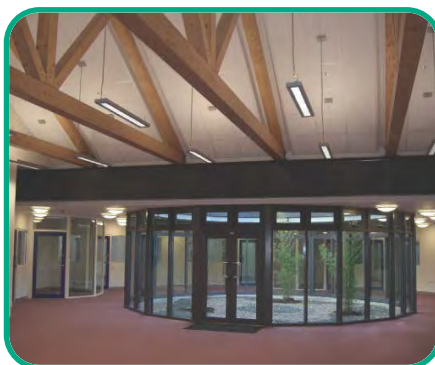
Upton All Saints is a single storey building with feature Japanese gardens lit up to give a gentle subtle feeling.

The classrooms are all different shapes and sizes with White Boards fitted in line with the latest standards a school generally sets.

- ❏ Mains Distribution
- ❏ General Lighting
- ❏ Emergency Lighting
- ❏ LV Power
- ❏ Fire Alarms
- ❏ Cable Management
- ❏ Lightning Protection
- ❏ Door & Video Access
- ❏ Pan & Tilt Cameras
- ❏ TV/Satellite System

ALL SAINTS SCHOOL, UPTON.

The images below illustrate All Saints School on project completion.





I.E.D.
Installations
Limited

Committed to
Service

ST. HUGHS, LIVERPOOL.

- **Project Value: £230,000.00**
- **Project Type: Office Development**
- **Project Aim: Refurbishment**
- **Project Completion: October 2010**

ST. HUGHS, LIVERPOOL.

St Hughs is an existing office block totally stripped back to allow for a full refurbishment.

The electrical services to open plan office areas on a single floor within an occupied office block had power and lighting installed generally to the client's specification.

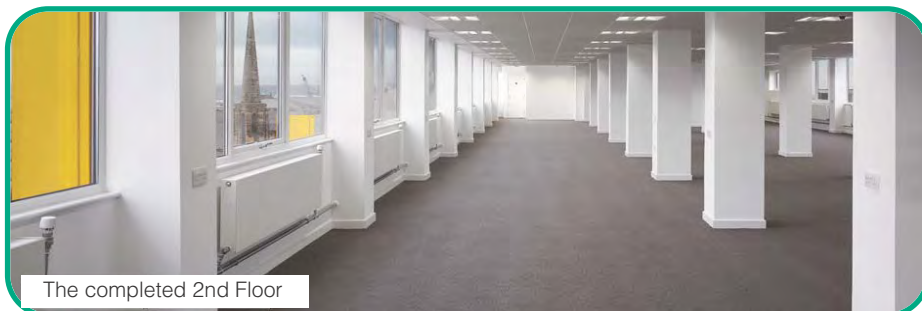
- ❑ **Mains Distribution**
- ❑ **General Lighting**
- ❑ **Emergency Lighting**
- ❑ **LV Power**
- ❑ **Cable Management**



The images below illustrate St.Hughs on project completion.



Exterior view of St. Hughs



The completed 2nd Floor



The fantastic exterior



The stunning interior



**I.E.D.
Installations
Limited**

**Committed to
Service**

MENS DIRECT ACCESS, LIVERPOOL.

- **Project Value: £200,000.00**
- **Project Type: Accommodation**
- **Project Aim: New Build**
- **Project Completion: June 2008**

MENS DIRECT ACCESS

IED were appointed as the preferred electrical contractor for this project for the services required under the formal tender process.

This facility was introduced for the welfare of homeless men and private rooms for their comfort.

Generally the lighting and power within the rooms are of basic requirements as per the client's needs.

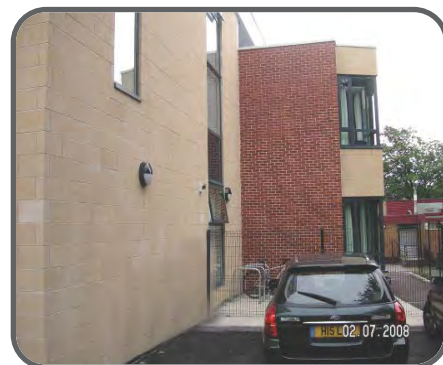
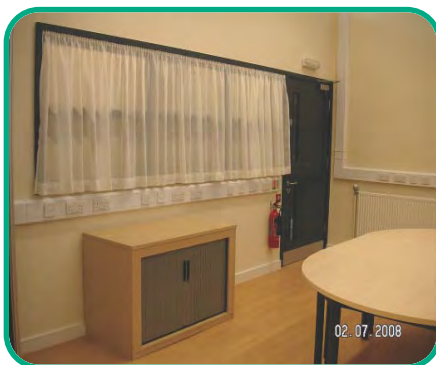
A staff area, kitchen facility and communal rest area were formed with small power and lighting as per the design.

A fire alarm system, Door access and CCTV were included for the security and safety aspect to this project.

- ❑ Mains Distribution
- ❑ General Lighting
- ❑ Emergency Lighting
- ❑ LV Power
- ❑ Fire Alarms
- ❑ Cable Management
- ❑ Lightning Protection
- ❑ Door & Video Access
- ❑ Pan & Tilt Cameras
- ❑ Voice & Data System
- ❑ Nurse/Staff Attack
- ❑ Disabled Refuge Alarm System
- ❑ TV/Satellite System

MENS DIRECT ACCESS, LIVERPOOL.

The images below illustrate Mens Direct Access on project completion.





**I.E.D.
Installations
Limited**

**Committed to
Service**

ROYAL UNIVERSITY HOSPITAL

- Project Value: £200,000.00
- Project Type: Healthcare
- Project Aim: Refurbishment
- Project Completion: Sept 2006

BREAST CLINIC

IED were appointed as the preferred electrical contractor for this project for the services required under the formal tender process.

The removal of the existing ward area services were carried out to allow for the refurbishment to include the newly developed sensitive ward for the comfort of those who had recently undergone cancer surgery.

The electrical and associated specialist services were installed to give the feeling that the ward has more of a homely environment other than a hospital ward.

- ❏ Mains Distribution
- ❏ General Lighting
- ❏ Emergency Lighting
- ❏ LV Power
- ❏ Fire Alarms
- ❏ Cable Management
- ❏ Door & Video Access
- ❏ Voice & Data System
- ❏ Nurse/Staff Attack
- ❏ TV/Satellite System

ROYAL UNIVERSITY HOSPITAL - BREAST CLINIC

The images below illustrate The Breast Clinic on project completion.



The Royal Liverpool and
Broadgreen University Hospitals
NHS Trust

KYFFIN TAYLOR HOUSE, MAGHULL.

- **Project Value: £200,000.00**
- **Project Type: Accommodation**
- **Project Aim: New Build**
- **Project Completion: August 2007**

GREAT PLACES HOUSING GROUP

- **Project Value: £183,000.00**
- **Project Type: Accommodation**
- **Project Aim: Refurbishment**
- **Project Completion: April 2011**

KYFFIN TAYLOR HOUSE, MAGHULL.

Kyffin Taylor care home is in a quiet environment and has been extended to cater for additional people in their later life in a comfortable surrounding.

The project consisted of open plan relax areas as well as bedroom accommodation. The individual rooms along with the staff areas have staff alarms to assist in the case of a resident in need of help.

The extension has its own kitchen facility with all catering needs for the block.

- ❑ Mains Distribution
- ❑ General Lighting
- ❑ Emergency Lighting
- ❑ LV Power
- ❑ Fire Alarms
- ❑ Cable Management
- ❑ Lightning Protection
- ❑ Door & Video Access
- ❑ Pan & Tilt Cameras
- ❑ Voice & Data System
- ❑ Nurse/Staff Attack
- ❑ Disabled Refuge Alarm System
- ❑ TV/Satellite System

GREAT PLACES HOUSING GROUP

IED were nominated a section of the area of West Lancashire to carry out the safety installations of the Great Places Housing Group Care Homes.

This included the introduction of emergency lighting and fire alarm systems to comply with the latest regulations.

The design, supply, installation and commissioning of the aforementioned items formed part of the contract.

The delivery of the property safety schemes were overseen by the group with over 40 properties completed.

The works associated with the fire and emergency lighting included the newly installed fire rated doors (with furniture), intumescent fire strip installations, making good and decoration to the areas in need.

- ❑ General Lighting
- ❑ Emergency Lighting
- ❑ Fire Alarms
- ❑ Heating & Ventilation
- ❑ Building Work





I.E.D.
Installations
Limited

Committed to
Service

AINTREE HOSPITAL - RADIOLOGY

- **Project Value: £180,000.00**
- **Project Type: Health Care**
- **Project Aim: Refurbishment**
- **Project Completion: Feb 2011**

AINTREE HOSPITAL

IED were appointed as the preferred electrical contractor for this project for the services required under the formal tender process.

The removal of the existing clinic area services were carried out allowing for the refurbishment to include the extension of the radiology and imaging department.

The expansion of this area included the modifications to, and newly installed CT scanner and X ray systems.

The rooms in question comply with the latest Meigan regulations and specialist power supplies were introduced (IPS/UPS) as per the design requirements.

Generally individual cubicles were formed for the patient's privacy during routine tests.

These areas were fitted with stand alone electrical bed head facilities and lighting for examination purposes.

The general area has dimmable lighting for softer luminance.

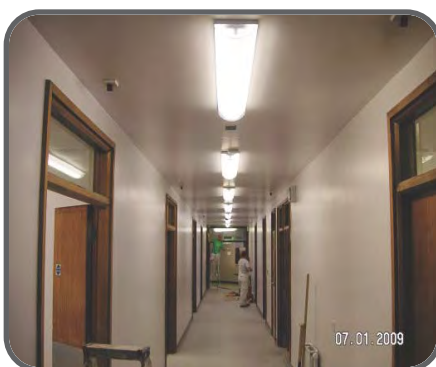
Alterations to the fire alarm system were installed to cover the areas added to the project.

Door access was also introduced for patient security.

- ❑ **Mains Distribution**
- ❑ **General Lighting**
- ❑ **Emergency Lighting**
- ❑ **LV Power**
- ❑ **Fire Alarms**
- ❑ **Cable Management**
- ❑ **Door & Video Access**
- ❑ **Voice & Data System**
- ❑ **Nurse/Staff Attack**
- ❑ **TV/Satellite System**

RADIOLOGY & IMAGING DEPARTMENT

The images below illustrate The Radiology Department on project completion.



BOLTON NHS, MATERNITY

- **Project Value: £25,000.00**
- **Project Type: Healthcare**
- **Project Aim: Refurbishment**
- **Project Completion: May 2010**

SALFORD QUAYS

- **Project Value: £150,000.00**
- **Project Type: Office Development**
- **Project Aim: Refurbishment**
- **Project Completion: Nov 2005**

BOLTON NHS, MATERNITY

A major overhaul of the IT Network System within the block. This comes in conjunction with the upgrade of the general NHS IT Systems throughout.

A structured wiring system installed from the main IT data cubicles to the end user desk positions.

The cubicles are fibre linked to give the final network connection for support from the NHS IT Department within the trust.

- ❑ Mains Distribution
- ❑ General Lighting
- ❑ Emergency Lighting
- ❑ LV Power
- ❑ Fire Alarms
- ❑ Cable Management
- ❑ Voice & Data System
- ❑ Nurse/Staff Attack
- ❑ TV/Satellite System

SALFORD QUAYS, MANCHESTER

An office redevelopment with the introduction of a new tenant fit out within a highly sought after commercial area.

The electrical services provided were designed under a formal tender process and awarded to IED Installations Ltd as the preferred sub contractor.

- ❑ Mains Distribution
- ❑ General Lighting
- ❑ Emergency Lighting
- ❑ LV Power
- ❑ Cable Management

BOALER STREET DEVELOPMENT

- **Project Value: £150,000.00**
- **Project Type: Residential**
- **Project Aim: New Build**
- **Project Completion: Dec 2006**

BIRCHGREEN HOUSING ESTATE

- **Project Value: £150,000.00**
- **Project Type: Residential**
- **Project Aim: Refurbishment**
- **Project Completion: July 2005**

BOALER STREET DEVELOPMENT

The Boaler Street project is a residential and commercial property feeding the local community.

The dwellings are of an upper floor apartment type with shop units at ground floor level.

The flats were fitted out with the basic requirements for living and the shops installed to a landlord specification with a view for tenant fit out.

- Mains Distribution
- General Lighting
- Emergency Lighting
- LV Power
- Fire Alarms
- Cable Management
- Lightning Protection
- Doot & Video Access
- Pan & Tilt Cameras
- Voice & Data System
- Disabled Refuge Alarm System
- TV/Satellite System

BIRCHGREEN HOUSING ESTATE

This project is for the remodelling of the kitchen areas for the local authority to bring them up to a better standard.

The electrical works (lighting, power and cooker supplies) were tested to the requirements laid down by the relevant bodies

- Mains Distribution
- General Lighting
- Emergency Lighting
- LV Power
- Fire Alarms
- Cable Management
- Voice & Data System
- Nurse/Staff Attack
- Disabled Refuge Alarm System
- TV/Satellite System
- Disabled Refuge Alarm System
- TV/Satellite System

LIVERPOOL UNIVERSITY OF MANAGEMENT

- **Project Value: £150,000.00**
- **Project Type: Education**
- **Project Aim: Refurbishment**
- **Project Completion: Dec 2002**

AAH PHARMACEUTICALS

- **Project Value: £150,000.00**
- **Project Type: Pharmaceuticals**
- **Project Aim: Refurbishment**
- **Project Completion: Nov 2007**

LIVERPOOL UNIVERSITY OF MANAGEMENT

The refurbishment of an existing building to allow for a facility to accommodate students to study in a more efficient environment.

The electrical installation works improved the standards set by the university.

- ❑ Mains Distribution
- ❑ General Lighting
- ❑ Emergency Lighting
- ❑ LV Power
- ❑ Fire Alarms
- ❑ Cable Management
- ❑ Door & Video Access
- ❑ Pan & Tilt Cameras
- ❑ Voice & Data System

**AAH PHARMACEUTICALS, ABERDEEN**

The Aberdeen division of this multi national company had a full refurbishment with all aspects of electrical services changed, including the mains distribution.

- ❑ Mains Distribution
- ❑ General Lighting
- ❑ Emergency Lighting
- ❑ LV Power
- ❑ Fire Alarms
- ❑ Cable Management





**I.E.D.
Installations
Limited**

**Committed to
Service**

YMCA LIVERPOOL

- Project Value: £150,000.00
- Project Type: Accommodation
- Project Aim: New Build
- Project Completion: August 2007

YMCA LIVERPOOL

The YMCA was built in 2007 to house young men who had become homeless.

The facility included the living quarters for the residents and communal areas for meeting and liaising.

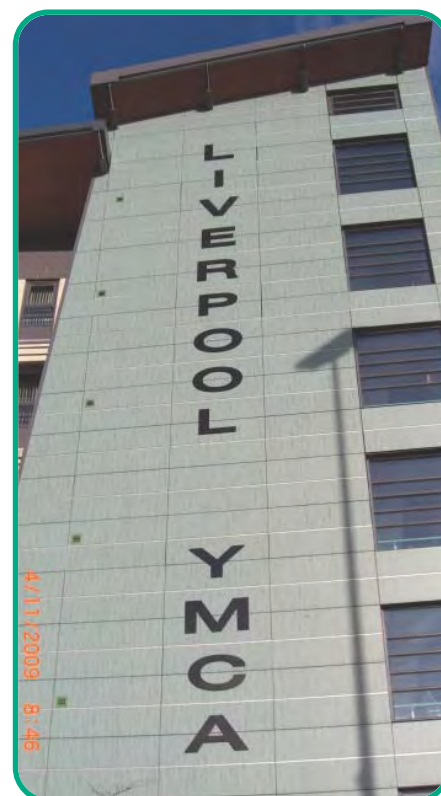
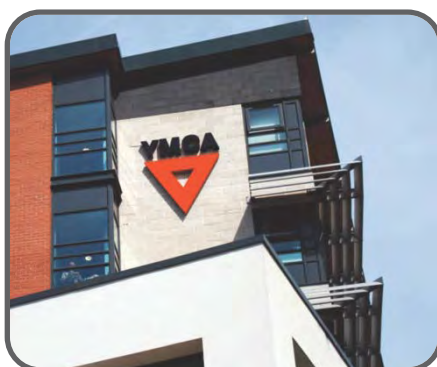
The building is a multi storey off road property close to the centre of the city centre.

- ❏ Mains Distribution
- ❏ General Lighting
- ❏ Emergency Lighting
- ❏ LV Power
- ❏ Cable Management



YMCA LIVERPOOL

The images below illustrate The YMCA on project completion.



AAH PHARMACEUTICALS

- **Project Value: £150,000.00**
- **Project Type: Pharmaceuticals**
- **Project Aim: Refurbishment**
- **Project Completion: June 2009**

HILLSIDE PRIMARY SCHOOL, WIRRAL

- **Project Value: £150,000.00**
- **Project Type: Education**
- **Project Aim: New Build**
- **Project Completion: October 2006**

AAH PHARMACEUTICALS, PAIGNTON

The Paignton division of this multi-national company had a full refurbishment with all aspects of electrical services changed, including the mains distribution.

- ❑ Mains Distribution
- ❑ General Lighting
- ❑ Emergency Lighting
- ❑ LV Power
- ❑ Fire Alarms
- ❑ Cable Management

**HILLSIDE PRIMARY SCHOOL, WIRRAL**

Hillside Primary has been fitted with an extension allowing for additional classroom facilities accommodating more pupils within the school.

The electrical aspect included the general lighting and power to enable the school to continue running as previous.

- ❑ Mains Distribution
- ❑ General Lighting
- ❑ Emergency Lighting
- ❑ LV Power
- ❑ Fire Alarms
- ❑ Cable Management
- ❑ Lightning Protection
- ❑ Door & Video Access
- ❑ Pan & Tilt Cameras
- ❑ Voice & Data System



**I.E.D.
Installations
Limited**

**Committed to
Service**

UNIVERSITY OF LIVERPOOL

- **Project Value: £130,000.00**
- **Project Type: Entertainment**
- **Project Aim: Refurbishment**
- **Project Completion: March 2012**

SWIMMING POOL

The refurbishment of the existing pool area to upgrade to a more efficient facility was carried out.

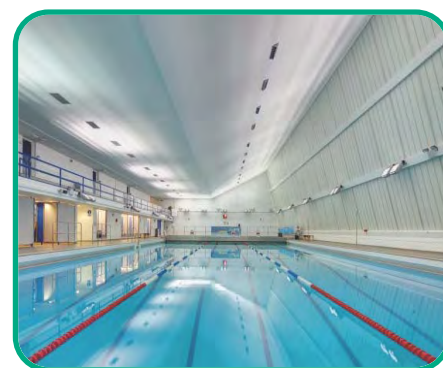
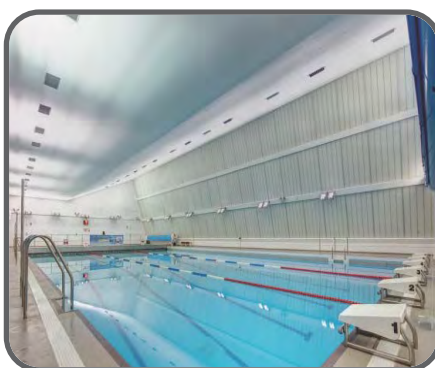
The design of the area was inclusive of the required IP ratings for water related projects.

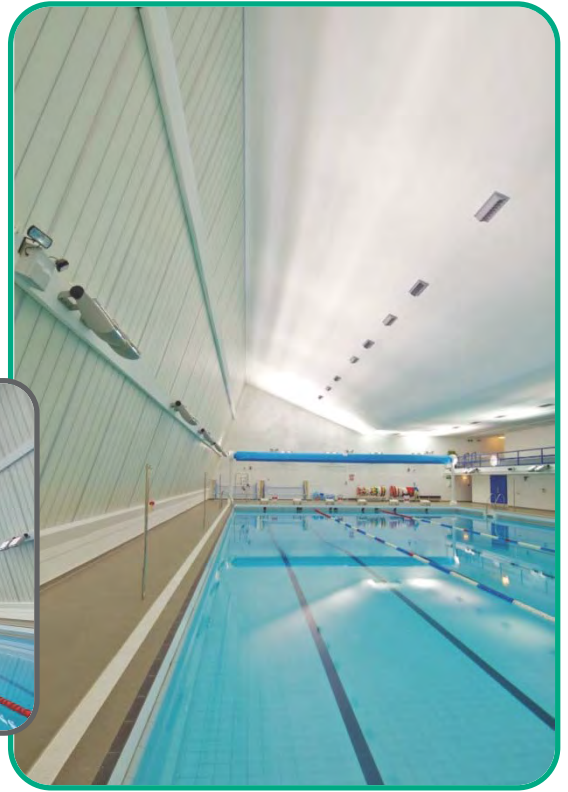
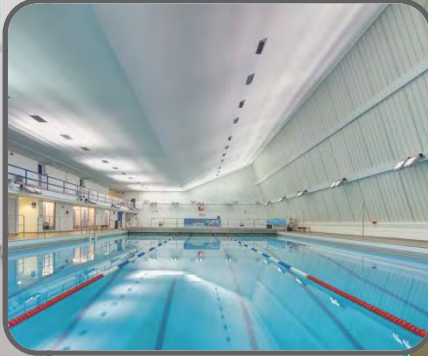
The electrical services included the general lighting and power standards set by the client.

- ❑ Mains Distribution
- ❑ General Lighting
- ❑ General Small Power
- ❑ Emergency Lighting
- ❑ LV Power,
- ❑ Cable Management
- ❑ Fire Alarms
- ❑ Security
- ❑ Voice and Data
- ❑ TV System

UNIVERSITY OF LIVERPOOL SWIMMING POOL

The images below and overleaf illustrate the pool on project completion.





I.E.D. Installations Limited - Committed to Service



UNIVERSITY OF LIVERPOOL SWIMMING POOL

MANCHESTER UNIVERSITY

- **Project Value: £140,000.00**
- **Project Type: Education**
- **Project Aim: Refurbishment**
- **Project Completion: Nov 2006**

BIRKDALE HIGH SCHOOL

- **Project Value: £120,000.00**
- **Project Type: Education**
- **Project Aim: Extension**
- **Project Completion: April 2007**

MANCHESTER UNI, CEEBLE BUILDING

Refurbishment to the Education Centre for additional teaching space with additional teaching walls fitted with Whiteboards and projection.

- ❏ Mains Distribution
- ❏ General Lighting
- ❏ Emergency Lighting
- ❏ LV Power
- ❏ Fire Alarms
- ❏ Cable Management
- ❏ Door & Video Access
- ❏ Pan & Tilt Cameras
- ❏ Voice & Data System

MANCHESTER
1824

The University of Manchester

BIRKDALE HIGH SCHOOL

An extension to the existing school with additional remodelling to adjacent areas for extra teaching facilities/classrooms, including feature walls for projection and AV positions.

- ❏ Mains Distribution
- ❏ General Lighting
- ❏ Emergency Lighting
- ❏ LV Power
- ❏ Fire Alarms
- ❏ Lightning Protection
- ❏ Cable Management
- ❏ Door & Video Access
- ❏ Pan & Tilt Cameras
- ❏ Voice & Data System



**I.E.D.
Installations
Limited**

**Committed to
Service**

No.1 DALE STREET, LIVERPOOL

- **Project Value: £125,000.00**
- **Project Type: Office Development**
- **Project Aim: Refurbishment**
- **Project Completion: Feb 2009**

No.1 DALE STREET

IED were appointed as the preferred electrical contractor for this project for the services required under the formal tender process.

Due to this project office being in the heart of Liverpool city centre, it required careful planning with regards to delivery of materials and also there being other businesses in the same block.

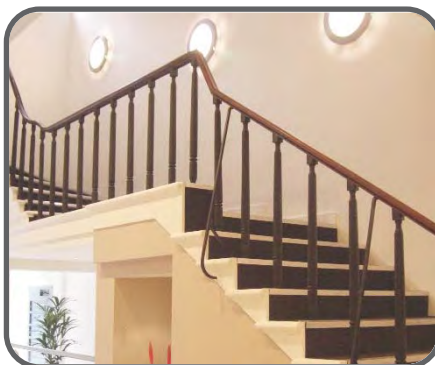
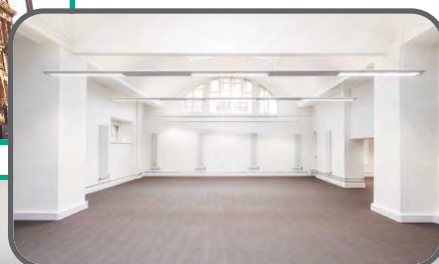
The installation of architectural lighting and general small power requirements can be found throughout.

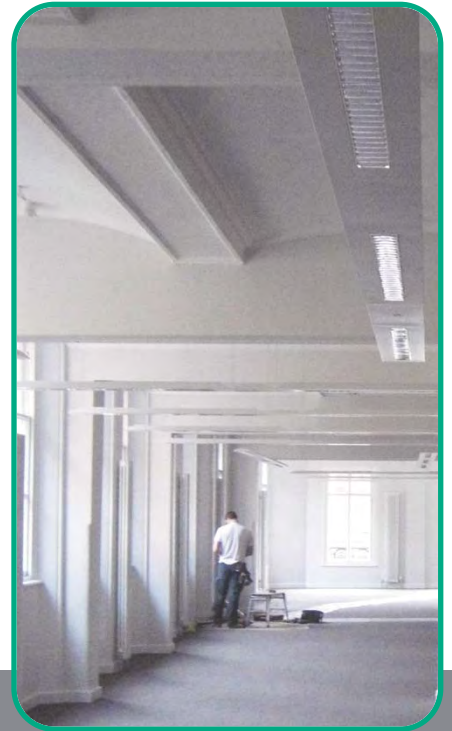
- ❑ **Mains Distribution**
- ❑ **General Lighting**
- ❑ **Emergency Lighting**
- ❑ **LV Power**
- ❑ **Cable Management**

No.1 DALE STREET, LIVERPOOL CITY CENTRE



Combining the features of a Grade II listed building with modern lighting and heating alongside door and video access





I.E.D. Installations Limited - Committed to Service



This grade II listed building covering 9,737 ft², in the heart of Liverpool city centre, has recently undergone a complete refurbishment in conjunction with I.E.D.

No.1 DALE STREET, LIVERPOOL CITY CENTRE.

LEASOWE JUNIOR SCHOOL

- **Project Value: £120,000.00**
- **Project Type: Education**
- **Project Aim: Extension**
- **Project Completion: Oct 2005**

WIRRAL MAGISTRATES COURT

- **Project Value: £120,000.00**
- **Project Type: Local Authority**
- **Project Aim: Refurbishment**
- **Project Completion: March 2006**

LEASOWE JUNIOR SCHOOL, WIRRAL

Leasowe Junior School had an extension fitted to the existing teaching block to accommodate additional education space.

The introduction of the extra electrical services allowed for the areas to run with the latest technology expected in the modern day era.

- ❑ Mains Distribution
- ❑ General Lighting
- ❑ Emergency Lighting
- ❑ LV Power
- ❑ Fire Alarms
- ❑ Lightning Protection
- ❑ Cable Management
- ❑ Door & Video Access
- ❑ Pan & Tilt Cameras
- ❑ Voice & Data System

WIRRAL MAGISTRATES COURT

An extensive emergency lighting scheme introduced to the property complying with the up to date BS5266 regulations and Building Control regulations for the district.

- ❑ General Lighting
- ❑ Emergency Lighting
- ❑ Fire Alarms

ST. MATTHEWS SCHOOL, BLACKBURN

- **Project Value: £120,000.00**
- **Project Type: Education**
- **Project Aim: Extension**
- **Project Completion: Oct 2010**

ASTRA ZENECA SPP4, MACCLESFIELD

- **Project Value: £80,000.00**
- **Project Type: Pharmaceuticals**
- **Project Aim: Refurbishment**
- **Project Completion: July 2005**

ST. MATTHEWS SCHOOL, BLACKBURN

St Matthews has an extension built to link the existing school and nursery.

The extension has its own distribution to allow for the electrical services.

The nursery has been refurbished to bring the facility up to date.

- ❑ Mains Distribution
- ❑ General Lighting
- ❑ Emergency Lighting
- ❑ LV Power
- ❑ Fire Alarms
- ❑ Lightning Protection
- ❑ Cable Management
- ❑ Door & Video Access
- ❑ Pan & Tilt Cameras
- ❑ Voice & Data System
- ❑ Disabled Refuge Alarm System
- ❑ Public Address System
- ❑ TV/Satellite System

ASTRA ZENECA SPP4, MACCLESFIELD

The works to Astra Zeneca included the upgrade of the IT requirements relating to the CAT 5e Structured Wiring and Fibres installations.

- ❑ Mains Distribution
- ❑ General Lighting
- ❑ Emergency Lighting
- ❑ LV Power
- ❑ Fire Alarms
- ❑ Cable Management
- ❑ Door & Video Access
- ❑ Pan & Tilt Cameras
- ❑ Voice & Data System

AstraZeneca 



**I.E.D.
Installations
Limited**

**Committed to
Service**

NORTHWICH CREMATORIUM

- **Project Value: £90,000.00**
- **Project Type: Crematorium**
- **Project Aim: New Build**
- **Project Completion: July 2014**

NORTHWICH CREMATORIUM

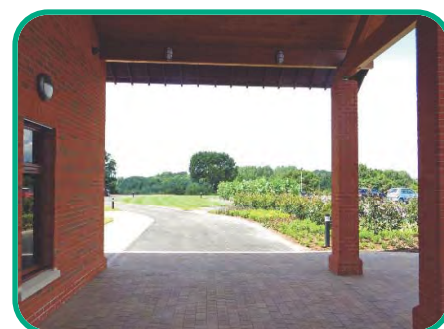
A new building in the Northwich area was specifically designed as a crematorium with extensive landscaping to the surrounding area.

The single storey building consisted of a chapel, offices and plant room area.

The works consisted:

- ✚ Mains Distribution
- ✚ General Lighting
- ✚ Emergency Lighting
- ✚ LV Power
- ✚ Fire Alarms
- ✚ Security Systems
- ✚ Lightning Protection
- ✚ External Lighting
- ✚ Roadway Lighting
- ✚ CCTV
- ✚ Voice and Data

NORTHWICH CREMATORIUM NEW BUILD





I.E.D. Installations Limited - Committed to Service



**I.E.D.
Installations
Limited**

**Committed
to Service**

NORTHWICH CREMATORIUM NEW BUILD



I.E.D.
Installations
Limited

Committed to
Service

OPEN EYE GALLERY

- **Project Value: £70,000.00**
- **Project Type: Entertainment**
- **Project Aim: Refurbishment**
- **Project Completion: March 2012**

OPEN EYE GALLERY

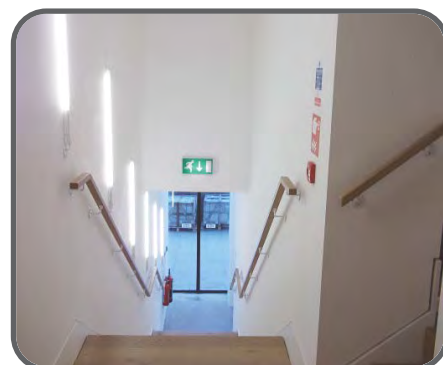
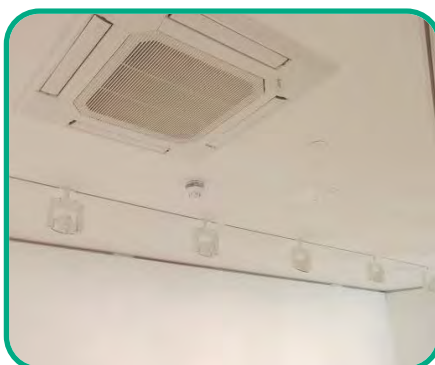
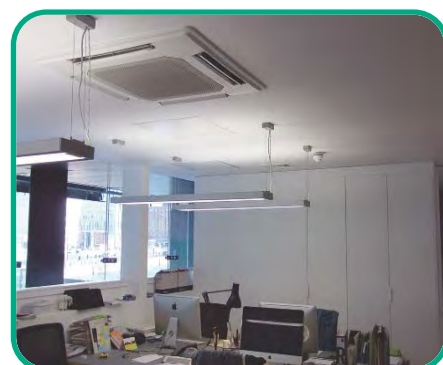
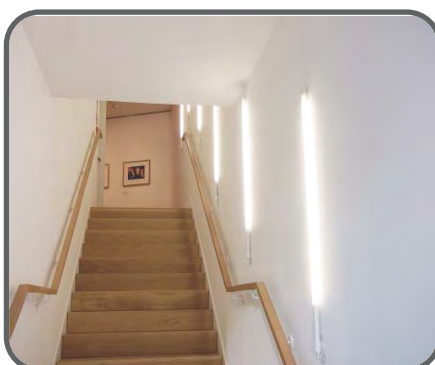
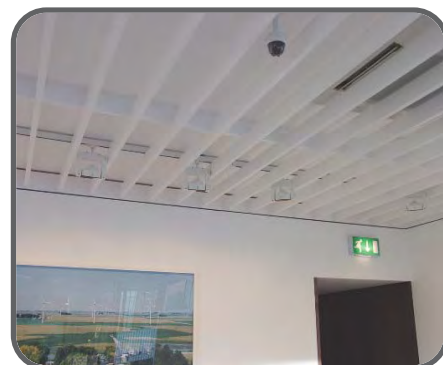
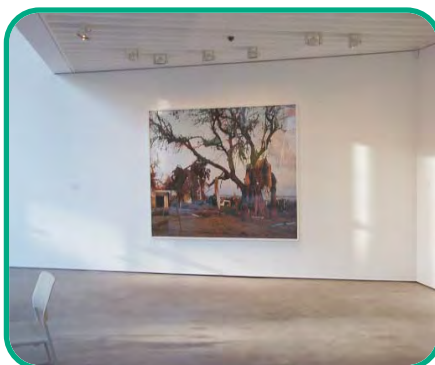
The Open Eye Gallery forms part of the new Museum of Liverpool adjacent to the waterfront.

The gallery installation was designed to the standards laid down by the architect and electrical consultant.

- ❏ Mains Distribution
- ❏ General Lighting
- ❏ Emergency Lighting
- ❏ LV Power
- ❏ Cable Management
- ❏ Fire Alarms
- ❏ Security
- ❏ Voice and Data
- ❏ TV System

OPEN EYE GALLERY

The images below illustrate the Open Eye Gallery on project completion.





I.E.D.
Installations
Limited

Committed to
Service

AINTREE RACECOURSE, SUNDEW BAR

- **Project Value: £70,000.00**
- **Project Type: Entertainment**
- **Project Aim: Refurbishment**
- **Project Completion: March 2012**

AINTREE RACECOURSE

IED were nominated as the preferred electrical contractor for this project for the services required under the formal tender process.

The extension of the first floor bar area was added to allow for more race goers to enjoy their experience.

The bar facility was accompanied by the addition of a champagne & seafood area.

Both areas are open plan and easily accessed via the main lift area or stands.

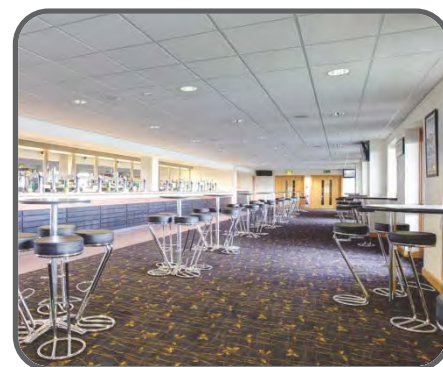
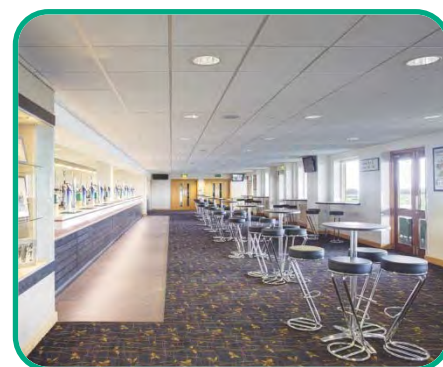
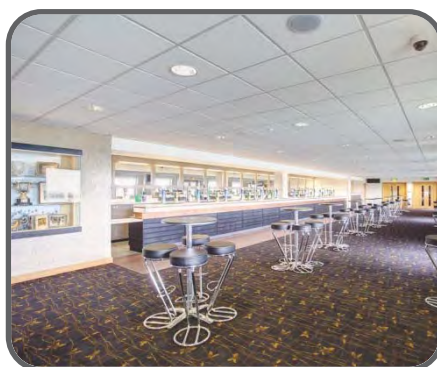
General lighting within the area is recessed downlighting, with feature lighting for the bars, photographs and decorative cabinets as per the architect's design.

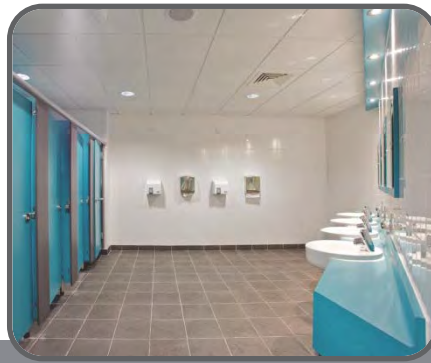
Small power facilities for race TV's and the bars were installed throughout the project.

- ❑ Mains Distribution
- ❑ General Lighting
- ❑ Emergency Lighting
- ❑ LV Power
- ❑ Fire Alarms
- ❑ Cable Management
- ❑ Door & Video Access
- ❑ Pan & Tilt Cameras
- ❑ Public Address System
- ❑ TV/Satellite System
- ❑ Air Conditioning
- ❑ Sanitation
- ❑ Heating & Ventilation

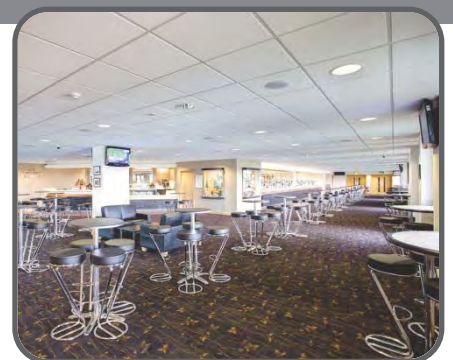
SUNDEW BAR, AINTREE RACECOURSE

The images below and overleaf illustrate the Sundew Bar on project completion.





I.E.D.Installations Limited - Committed to Service



SUNDEW BAR, AINTREE RACECOURSE, LIVERPOOL

BIRMINGHAM POLICE - FIREARMS

- **Project Value: £65,000.00**
- **Project Type: Local Authority**
- **Project Aim: Refurbishment**
- **Project Completion: July 2007**

ALDER HEY HOSPITAL, LIVERPOOL

- **Project Value: £60,000.00**
- **Project Type: Health Care**
- **Project Aim: Refurbishment**
- **Project Completion: Nov 2007**

BIRMINGHAM POLICE - FIREARMS

This introduced the refurbishment of an area of the building to accommodate the sectioned firearms department.

The electrical installation allowed for specific specialist lighting to the rooms for testing and forensics.

- ❑ Mains Distribution
- ❑ General Lighting
- ❑ Emergency Lighting
- ❑ LV Power
- ❑ Fire Alarms
- ❑ Cable Management
- ❑ Door & Video Access
- ❑ Pan & Tilt Cameras
- ❑ Voice & Data System

**ALDER HEY HOSPITAL, LIVERPOOL**

IED were appointed as the preferred electrical contractor for this project for the services required under the formal tender process.

The office area of this department has undertaken a refurbishment to allow for the addition of working areas to comply with building regulations.

Electrically, the installation of dado trunking comprising of small power and structured wiring is generally found around the perimeter walls of the offices.

New lighting and fire alarms have also been installed as per the consultants design.

- ❑ Mains Distribution
- ❑ General Lighting
- ❑ Emergency Lighting
- ❑ LV Power
- ❑ Fire Alarms
- ❑ Cable Management
- ❑ Door & Video Access
- ❑ Pan & Tilt Cameras
- ❑ Nurse/Staff Attack
- ❑ TV/Satellite System
- ❑ Gas/Medical Gas System

ROY CASTLE CENTRE, LIVERPOOL.

- **Project Value: £40,000.00**
- **Project Type: Office Development**
- **Project Aim: Refurbishment**
- **Project Completion: Sept 2008**

AINTREE RACECOURSE, SADDLE BAR

- **Project Value: £40,000.00**
- **Project Type: Entertainment**
- **Project Aim: New Build**
- **Project Completion: April 2007**

ROY CASTLE CENTRE

This is an office redevelopment to improve the workspace for staff and extend the storage capacity for medical and confidential filing within an expanding support service.



- Mains Distribution
- General Lighting
- Emergency Lighting
- LV Power
- Fire Alarms
- Cable Management
- Door & Video Access
- Pan & Tilt Cameras
- Voice & Data System
- Nurse/Staff Attack

AINTREE RACECOURSE, SADDLE BAR

The Saddle Bar is situated between the Earl of Derby and the Lord Sefton Stands.

The glazed open plan heated area has spectacular viewing of both the racecourse and the parade ring for the winning horses.

- Mains Distribution
- General Lighting
- Emergency Lighting
- LV Power
- Cable Management



**I.E.D.
Installations
Limited**

**Committed to
Service**

Main Services

Electrical:

- Design and consultation
- LV distribution and earthing
- General lighting
- Emergency lighting
- LV power
- Fire alarms
- Cable management
- Generator and UPS setups
- HVAC wiring
- Hazardous areas installations
- Lightning protection

Data:

- Network design and installation
- Category 5e/Category 6 structured cabling
- Category 5e/Category 6 termination
- Testing & certification
- Fibre optic backbone cabling, Singlemode and Multimode
- Fibre optic, termination, testing and certification
- Cabinet/Rack/Mux/arrangements
- Active equipment, design installation and programming

Voice:

- Distribution cabling internal/external
- Line wiring circuits and outlets
- DDF coax installation
- TJF design installations
- Installation/maintenance of stand-alone voice and data switches
- Installation/maintenance of integrated telephony networks
- Line and switch fault finding and inspection
- UPS arrangements

Electrical Testing & Inspection:

- 17th Edition Fixed Wire Testing
- Earth electrode/lightning protection
- Petroleum licensing inspections
- Entertainment licensing inspections
- Emergency lighting inspections
- Hazardous area inspections
- RCD testing
- Electrical installation inspections

Access Control/CCTV:

- Door access
- Video access
- Intercom
- Panic alarms
- Static cameras
- Pan and tilt cameras

Construction Services:

- Flooring
- Refurbishment
- Structural
- Partitioning
- Joinery
- Painting
- Plastering
- Plumbing

Mechanical:

- Plumbing
- Sanitation
- Heating and ventilation
- Air-Conditioning
- Pump installation
- Boiler installation



i.e.d installations limited

16 Skyhawk Avenue Dakota Business Park Liverpool L19 2QR

Telephone: 0151 427 8500 Facsimile: 0151 427 8600

email: info@ied-uk.com web: www.ied-uk.com

