



**I.E.D.
Installations
Limited**

Our Business Services include...

Electrical >	Access Control >
Data >	CCTV >
Voice >	Mechanical >
Electrical Testing >	Building >

Committed to Service

www.ied-uk.com

0151 427 8500

Case Studies



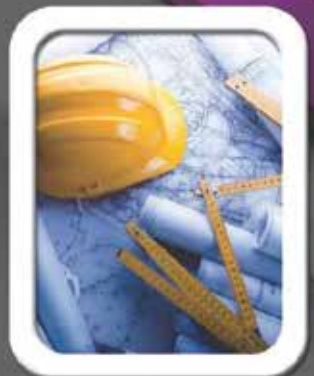
Electrical



Mechanical



Voice/Data



Building



I.E.D. Installations Limited

Statement



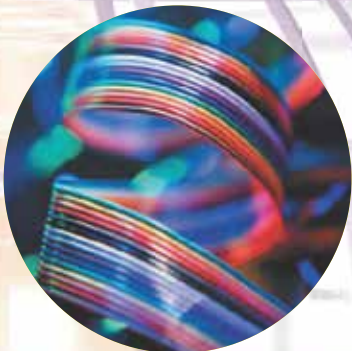
IED Installations were established in 1994, and have sustained a continued growth year on year, this being due to our commitment to our client base and staff.

Our focus is to provide a service that meets our clients and future clients satisfaction with regards to professional approach, quality, delivery, health and safety and value for money.

IED has grown into a recognised construction service provider within the North West, this being due to our commitment to provide a flexible approach to the services we provide to our customers and our forward planning.



Our approach to all projects is to work as a team with the client and his professional team to deliver a quality project and within budget. This is achieved by our openness and technical abilities within our organisation to look at each individual project with regards to delivery, valued engineering, build ability and programming.



We employ over 50 operatives with many years of experience within the construction industry and have a very stringent training programme for all our operatives / apprentices with regard to their technical and health and safety training. The range of services we can provide are Mechanical, Electrical, Voice and Data, Test and Inspection, Planned Preventative Maintenance, Project Management and Construction Services.

Our client base ranges from Health, Education, Commercial, Industrial and the Private Sector.

Sectors of Work

Private, Commercial, Industrial, Health, Education, Chemical, Pharmaceutical, Paper, Leisure, Construction, Water and Local and Government Authorities.

Company Memberships

The company is approved by the following organisations, which verify the condition and standard of work carried out in the sectors and the industry we work in.

- National Inspection Council for Electrical Installation Contracting
- The Electrical Contractors Association
- Telecommunications Industry Association
- Fibre Optic Industry Association
- Constructionline
- North West Consortium
- Joint Industries Board
- Contractors Health & Safety Scheme
- Achilles
- Safe Contractor

Case Studies

These case studies showcase the services that I.E.D. can provide and also a selection of projects that I.E.D. Installations has completed.

Electrical

We provide a full range of electrical, fire alarm and lighting services including HVAC wiring and cable management.

Voice / Data

We provide an extensive scope of network design & installation, fibre optic backbone cabling and more.

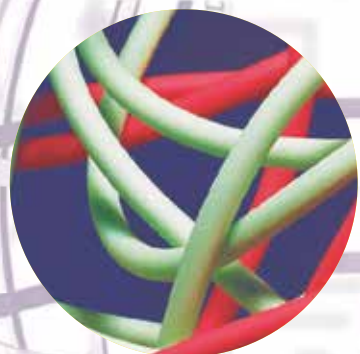
Mechanical

We offer a full range of mechanical services, including Air Conditioning, Sanitation & Plumbing.

Building

I.E.D. also provide a list of professional building and refurbishment services.

<http://www.ied-uk.com/services.html>





I.E.D.
Installations
Limited

Committed to
Service

ALFRED H KNIGHT

- **Project Value: £2,000,000**
- **Project Type: Electrical Installation**
- **Project Aim: Electrical Upgrade**
- **Project Completion: July 2017**

ALFRED H KNIGHT

IED Installations were appointed to carry out the full electrical installation for Alfred H Knight at their prestigious laboratories at Kings Business Park, Knowsley.

The installation consisted of the following:

- ❑ 2 new LV substations
- ❑ LV System
- ❑ Power Distribution
- ❑ Lighting
- ❑ Emergency Lighting
- ❑ Fire Alarms
- ❑ Intruder Alarms
- ❑ CCTV
- ❑ Door Access
- ❑ IT Installation



Alfred H Knight

ALFRED H KNIGHT







**I.E.D.
Installations
Limited**

**Committed to
Service**





I.E.D.Installations Limited - Committed to Service



ALFRED H KNIGHT



**I.E.D.
Installations
Limited**

**Committed to
Service**

MOVIANTO PHARMACEUTICAL STORAGE UNIT

- Project Value: £1,400,000
- Project Type: Pharmaceutical
- Project Aim: Design and Install
- Project Completion: June 2019

MOVIANTO HAYDOCK PHARMACEUTICAL STORAGE UNIT

We have recently completed a new build project based in Haydock, the scheme was an NHS Medical drugs storage facility, the project value was 1.4 Million Pounds, the basis of our works consisted of the full design, supplied, installed, test and commissioning of the M&E package including all life safety systems. The project is 320,000 cubic footprint and our containment installation stands at 17m throughout the entire perimeter of the warehouse.

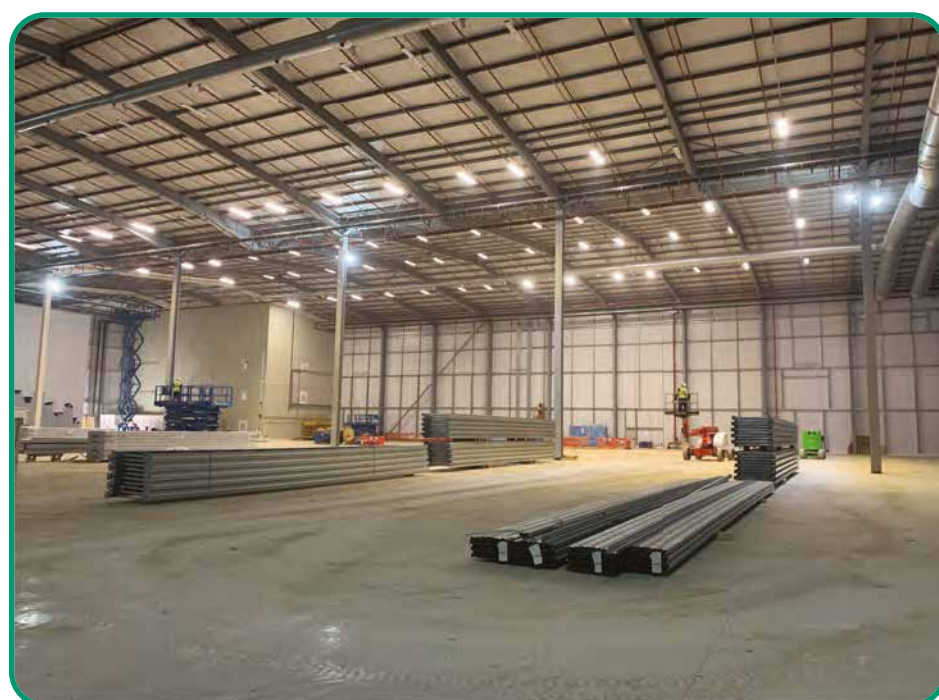
We installed a new 1500KVA Distribution system and main switch panel, also new 1500KVA Standby Generator with 2500amp Changeover Switch. We installed a Smart High Bay LED lighting system that has an intelligent operation to detect the "Wireless Guide system" for the fork lift movements for the loading of the racking to stock the medicines and also for energy efficiency.

We have installed all systems below with all works completed in full defect free in our scheduled 16 week programme, all works have been carried out in accordance with all British Standard Regulations and all NHS Guidelines.



See overleaf for the list of works

MOVIANTO PHARMACEUTICAL STORAGE UNIT



The works consisted of, but were not limited to:

- Containment
- Lighting
- Emergency Lighting & Lighting control
- Power
- Data
- Fire & Aspirating system
- Distribution
- CCTV
- Access control
- Intruder
- Intercom
- Refrigeration Supplies
- Gas
- Battery Charging stations











MOVianto PHARMACEUTICAL STORAGE UNIT



**I.E.D.
Installations
Limited**

**Committed to
Service**

ACRE MILL, HUDDERSFIELD

- **Project Value: £1,100,000**
- **Project Type: Refurbishment**
- **Project Aim: Upgrade of Former Mill**
- **Project Completion: December 2014**

ACRE MILL, HUDDERSFIELD

I.E.D Installations designed, supplied, installed tested and commissioned the full electrical installation works at Acre Mill Huddersfield. Working in co-ordination with John Turner construction and Jefferson Sheard architects, we installed a complete system to suit the client's needs and requirements.

Works carried out included, but were not limited to:-

New LV distribution system and main switch panel, new 150kVa standby generator, new 8kVa UPS system, complete small power and lighting installation, new emergency lighting control system, new fire alarm system, new data installation network, new staff attack and nurse monitoring system, new intruder alarm system, new CCTV and Access control system. Construction works were completed within programme restraints.

The projects' aims were:

- **Refurbishment of Redundant Mill building into new NHS offices and walk in centre**
- **Provide new modern facilities for staff and patients and Huddersfield and Calderdale trust**

ACRE MILL, HUDDERSFIELD





I.E.D.Installations Limited - Committed to Service



REFURBISHMENT OF ACRE MILL, HUDDERFIELD



I.E.D.
Installations
Limited

Committed to
Service

PLAZA BUILDING, LIVERPOOL

- **Project Value: £1 MILLION**
- **Project Type: Office Department**
- **Project Aim: Refurbishment**
- **Project Completion: October 2008**

PLAZA BUILDING

The installation of sub main distribution and the electrical services to open plan office areas on eight floors within a multi storey occupied office block had power and lighting installed generally to a high technical specification.

A lighting control system is fitted to allow for the dimming and daylight detection for energy efficiency.

- ❏ **Mains Distribution**
- ❏ **General Lighting**
- ❏ **Emergency Lighting**
- ❏ **LV Power**
- ❏ **Cable Management**



PLAZA BUILDING, LIVERPOOL CITY CENTRE



AAH PHARMACEUTICALS, NEXUS POINT

- **Project Value: £800,000.00**
- **Project Type: Pharmaceuticals**
- **Project Aim: Extension**
- **Project Completion: June 2012**

KINGSWAY CAMPUS, UNIVERSITY OF CHESTER

- **Project Value: £610,000.00**
- **Project Type: Education**
- **Project Aim: Refurbishment**
- **Project Completion: Sept 2007**

AAH PHARMACEUTICALS

An extension to the existing property allowing for expansion of a thriving business.

The installation of new switchgear to accommodate the new mezzanine floor and additional power requirements for more machinery and storage.

The introduction of a new generator set to protect the electrical services in case of power loss installed externally to the unit.

- ❑ Mains Distribution
- ❑ General Lighting
- ❑ Emergency Lighting
- ❑ LV Power
- ❑ Fire Alarms
- ❑ Cable Management
- ❑ Lightning Protection
- ❑ Pan & Tilt Cameras
- ❑ Voice & Data System
- ❑ Generator Installation

**KINGSWAY CAMPUS, UNIVERSITY OF CHESTER**

IED were appointed as the preferred electrical contractor for this project for the services required under the formal tender process.

The works were undertaken throughout the complex during the summer of 2007.

The project was delivered to the client as per the design and the university guidelines. Kingsway Campus is a specialist in drama, business and media studies.

The classrooms, art rooms, dance studios and performance stage facilities were introduced with a high specification.

- ❑ Mains Distribution
- ❑ General Lighting
- ❑ Emergency Lighting
- ❑ LV Power
- ❑ Fire Alarms
- ❑ Cable Management
- ❑ Lightning Protection
- ❑ Pan & Tilt Cameras
- ❑ Voice & Data System





I.E.D.
Installations
Limited

Committed to
Service

ST. MONICA'S HIGH SCHOOL, PRESTWICH

➤ **Project Value: £700,000.00**

➤ **Project Type: Education**

➤ **Project Aim: New Build**

➤ **Project Completion: July 2011**

ST. MONICA'S HIGH SCHOOL

A new school within the Prestwich area with all aspects of electrical and IT services fitted to allow for the school to run in a functional and secure manner. The school is of a different but eye catching design typically of two rugby balls entwined.

The two storey building has feature lighting and general classrooms have a dimmable specialist system. A biometric system was introduced for people counting to relieve stressful registrations and for safety.

- ❖ Mains Distribution
- ❖ General Lighting
- ❖ Emergency Lighting
- ❖ LV Power
- ❖ Fire Alarms
- ❖ Cable Management
- ❖ Lightning Protection
- ❖ Door & Video Access
- ❖ Pan & Tilt Cameras
- ❖ Voice & Data System
- ❖ Public Address System
- ❖ TV/Satellite System

ST.MONICA'S HIGH SCHOOL, PRESTWICH

The images below and overleaf illustrate St. Monica's High School on project completion.





I.E.D.Installations Limited - Committed to Service



ST.MONICA'S HIGH SCHOOL, PRESTWICH, MANCHESTER.



I.E.D.
Installations
Limited

Committed to
Service

KIRKBY CIVIC SUITE

- **Project Value: £700,000.00**
- **Project Type: Local Government**
- **Project Aim: Refurbishment**
- **Project Completion: 2014**

KIRKBY CIVIC SUITE

This project consisted of the complete refurbishment of the existing Kirkby Civic Suite which was then retitled the Kirkby Centre.

The building is situated in the town centre and was formerly an entertainment venue but was transformed into a One Stop Shop, Adult Disability Centre, Adult Library, Childrens Library, Art Gallery, Archive Store and Café

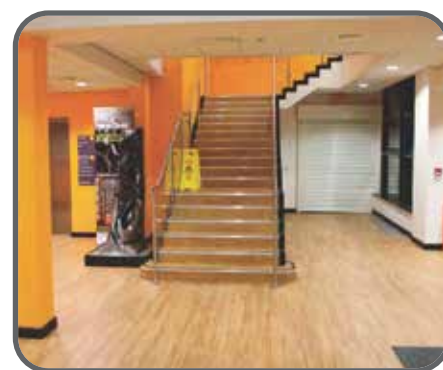
- ❖ Mains Distribution
- ❖ General Lighting
- ❖ Emergency Lighting
- ❖ LV Power
- ❖ Fire Alarms
- ❖ Small Power
- ❖ Intruder Alarm
- ❖ Door Access
- ❖ Voice and Data Systems
- ❖ CCTV
- ❖ Cable Management
- ❖ TV System



Knowsley Council

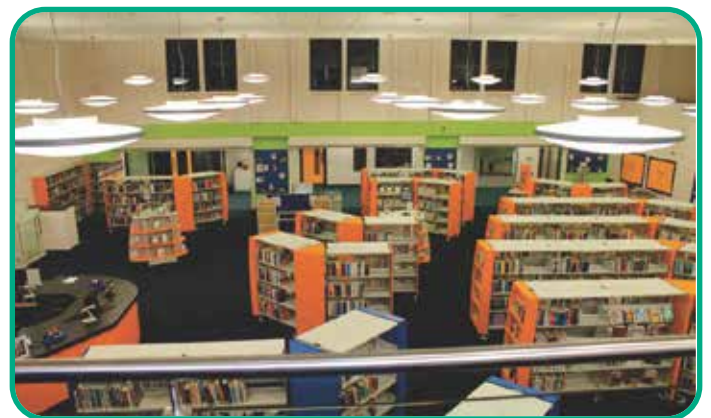
KIRKBY CIVIC SUITE, KNOWSLEY.

The images below and overleaf illustrate Kirkby Civic Suite on project completion.





I.E.D. Installations Limited - Committed to Service



KIRKBY CIVIC SUITE KNOWSLEY



**I.E.D.
Installations
Limited**

**Committed to
Service**

Knowsley Community College

- Project Value: £650,000.00
- Project Type: New build/Refurbishment
- Project Aim: New build/Refurbishment
- Project Completion: September 2017

Knowsley Community College

A new building comprising of ground, first and second floors was erected and IED installed a new main section board which fed various distribution boards throughout the building.

New lighting and small power systems were installed together with fire alarms, security and IT systems.

The existing school was upgraded and various areas re-designed and new lighting and small power systems installed.

The fire alarm and security systems were upgraded to the new design. It systems were incorporated into the new building design. External lighting was also upgraded and IED also installed new security barriers.

Works included but were not limited to the following:

- ❑ New mains distribution
- ❑ New lighting system
- ❑ Emergency lighting system
- ❑ Small power points throughout the building
- ❑ Fully addressable fire alarm system
- ❑ Intruder alarm system
- ❑ CCTV
- ❑ External lighting



Knowsley Community College





I.E.D.Installations Limited - Committed to Service



Knowsley Community College



**I.E.D.
Installations
Limited**

**Committed to
Service**

LSTM WOLFSON BUILDING

- **Project Value: £600,000.00**
- **Project Type: Refurbishment**
- **Project Aim: Remodelling of Building**
- **Project Completion: October 2015**

WOLFSON BUILDING

The project consisted of the complete refurb of existing blocks of flats which were completely stripped out and remodelled to form offices and open working areas.

A new substation was installed and a new switchroom created on the ground floor

Containment installed throughout the building.

- ❑ DB's installed to each floor
- ❑ Lighting & power circuits to all areas
- ❑ Linear lighting installed to all areas
- ❑ A structured IT cable installation
- ❑ Fire alarm system
- ❑ Gas suppression system
- ❑ CCTV and door access
- ❑ External lighting
- ❑ Lightning protection



LIVERPOOL SCHOOL OF TROPICAL MEDICINE





I.E.D.Installations Limited - Committed to Service



LIVERPOOL SCHOOL OF TROPICAL MEDICINE - WOLFSON BUILDING



**I.E.D.
Installations
Limited**

**Committed to
Service**

UNIVERSITY OF LIVERPOOL

- **Project Value: £600,000.00**
- **Project Type: Academic**
- **Project Aim: Refurbishment**
- **Project Completion: 2013**

SIRE BUILDING

IED were appointed as the preferred electrical contractor for this project for the services required under the formal tender process.

The works were undertaken throughout the complex during the summer of 2013.

The project was delivered to the client as per the design and the university guidelines.

- ❏ Mains Distribution
- ❏ General Lighting
- ❏ Emergency Lighting
- ❏ LV Power
- ❏ Fire Alarms
- ❏ Cable Management
- ❏ Door & Video Access
- ❏ Voice & Data
- ❏ Security System



UNIVERSITY OF
LIVERPOOL

UNIVERSITY OF LIVERPOOL - SIRE BUILDING

The images below and overleaf illustrate The Sire Building on project completion.





I.E.D.Installations Limited - Committed to Service



UNIVERSITY OF LIVERPOOL - SIRE BUILDING



I.E.D.
Installations
Limited

Committed to
Service

WELSH ASSEMBLY, LLANDUDNO, WALES

- **Project Value: £610,000.00**
- **Project Type: Government**
- **Project Aim: New Build**
- **Project Completion: August 2010**

WELSH ASSEMBLY

This project has a high profile political significance as the recently formed Welsh Assembly moved in to its new home.

The building is situated within the picturesque surroundings of Llandudno.

The facility has the usual office type areas inclusive of the technical lighting and power expected to aid the running of a patriotic nation.

The building itself has a unique shape to it and is lit up well with the decorative external lighting installed.

- ❏ Mains Distribution
- ❏ General Lighting
- ❏ Emergency Lighting
- ❏ LV Power
- ❏ Cable Management



Llywodraeth Cynulliad Cymru
Welsh Assembly Government

WELSH ASSEMBLY, LLANDUDNO, WALES.

The images below illustrate The Welsh Assembly on project completion.



PLANT ROOM RLBH

- **Project Value: £516,000**
- **Project Type: Plant Room Construction**
- **Project Aim: New Plant Room Install**
- **Project Completion: February 2017**

PLANT ROOM RLBH

IED were employed by Crown House Technologies to carry out the full electrical installation to the NW area of the 3rd floor plant at the new Royal Liverpool Hospital site.

As part of the works IED ensured a full management team was based on site for the duration of the works, as the programme and client demands were challenging.

IED's daily works would be to attend collaboration meetings, design team meetings, programme and progress meeting and labour resource meetings.

Works included but were not limited to the following:

- ❑ Review of all CHt design and IED adaptation of design
- ❑ Installation of all containment systems and bracket works
- ❑ Installation of small power and lighting wiring
- ❑ Installation of dali lighting system wiring
- ❑ Installation of free issue switchgear and distribution boards
- ❑ Installation of free issue lighting
- ❑ Full testing, inspection and commissioning of services



The Royal Liverpool and
Broadgreen University Hospitals
NHS Trust

SUB STATION 7 RLBH

- **Project Value: £421,000**
- **Project Type: Building Relocation**
- **Project Aim: Relocation of Plant Room**
- **Project Completion: November 2016**

SUB STATION 7 RLBH

IED were employed to carry out the full design, installation, test and commissioning of a new bespoke substation at the existing Royal Liverpool Hospital site. Carillion FM were our client on site and tasked us with carrying out the full enabling works to ground conditions, electrical route surveys, civil works footprint surveys and general design information in regards to a installation.

The new substation was being built to replace an existing substation, that was to be demolished as part of the new Royal Liverpool Hospital works. The aim of the project was to have both substations up and running, before a phased handover of supplies was carried out onto the new substation, then the eventual decommission and removal of the existing substation would be completed.

Works included but were not limited to the following:

- ❑ Full design of all construction and electrical installation
- ❑ Civil works to ground to allow asbestos removal
- ❑ Installation of new reinforced concrete base to house LV and HV switchgear
- ❑ Installation of new GRP housing for LV substation
- ❑ Installation of new containment on roof space of the Royal Liverpool Hospital
- ❑ Installation of new HV cabling for site HV ring main
- ❑ Installation of new LV cabling to feed existing supplies
- ❑ Installation and commissioning of HV switchgear
- ❑ Installation and commissioning of LV switchgear



The Royal Liverpool and
Broadgreen University Hospitals
NHS Trust



**I.E.D.
Installations
Limited**

**Committed to
Service**

OUR LADY & ST. JOHN COLLEGE

- **Project Value: £500,000.00**
- **Project Type: Education**
- **Project Aim: New Build**
- **Project Completion: Sept 2009**

OUR LADY & ST. JOHN

A new school project in Blackburn, Lancashire, fitted with all aspects of electrical and IT services.

All of the items installed give the school state of the art facilities for the teaching methods required to give pupils the future they choose.

- ❖ **Mains Distribution**
- ❖ **General Lighting**
- ❖ **Emergency Lighting**
- ❖ **LV Power**
- ❖ **Fire Alarms**
- ❖ **Cable Management**
- ❖ **Lightning Protection**
- ❖ **Door & Video Access**
- ❖ **Pan & Tilt Cameras**
- ❖ **Voice & Data System**

OUR LADY & ST. JOHN COLLEGE, BLACKBURN.

The images below illustrate The College on project completion.



PHARMACEUTICALS, LANGLEY

- **Project Value: £400,000.00**
- **Project Type: Pharmaceuticals**
- **Project Aim: Refurbishment**
- **Project Completion: August 2005**

CHESHIRE COUNTY COUNCIL

- **Project Value: £360,000.00**
- **Project Type: Residential**
- **Project Aim: New Build**
- **Project Completion: May 2009**

AAH PHARMACEUTICALS, LANGLEY

This project consisted of a new manually controlled lighting scheme throughout the property. The lighting was protected by new switchgear and tested completely to the IEE (BS7671) regulations.

- ❑ Mains Distribution
- ❑ General Lighting
- ❑ Emergency Lighting
- ❑ LV Power
- ❑ Fire Alarms
- ❑ Cable Management

**CHESHIRE COUNTY COUNCIL**

IED were appointed as the preferred electrical contractor for this project for the services required under the formal tender process.

This project was part of a scheme to provide independent living for the elderly across Cheshire.

This site provided 71 apartments comprising of living room, kitchen, bedroom and toilet / en suite.

Within the communal areas they had shared facilities such as lounge areas, hairdressers, shops, restaurant, laundry and external seating areas.

- ❑ Mains Distribution
- ❑ General Lighting
- ❑ Emergency Lighting
- ❑ LV Power
- ❑ Cable Management



**I.E.D.
Installations
Limited**

**Committed to
Service**

SHORELINES

- **Project Value: £450,000.00**
- **Project Type: Office Development**
- **Project Aim: Refurbishment**
- **Project Completion: Dec 2012**

SHORELINES

Shorelines, named after the road on which it resides. The existing units were transformed into developed office areas sectioned into two as per the landlords specification.

- ❑ Mains Distribution
- ❑ General Lighting
- ❑ Emergency Lighting
- ❑ LV Power
- ❑ Fire Alarms
- ❑ Cable Management
- ❑ Lightning Protection
- ❑ Door & Video Access
- ❑ Pan & Tilt Cameras
- ❑ TV/Satellite System

SHORELINES

The images below illustrate Shorelines on project completion.





**I.E.D.
Installations
Limited**

Committed to Service

I.E.D. Installations Limited - Committed to Service



SHORELINES, BIRKENHEAD.



**I.E.D.
Installations
Limited**

**Committed to
Service**

UNIVERSITY OF LIVERPOOL STUDENT HALLS

- Project Value: £400,000
- Project Type: Education
- Project Aim: Gas alarm installs
- Project Completion: November 2019

UNIVERSITY OF LIVERPOOL STUDENT HALLS

Vine Court System Profile:-

The System was broken into 2 Block being East & West Blocks equating to 865 gas alarms, the system communicates to each building as 1 System, all though the East & West Blocks have unique/individual addresses.

West Block was then broken down into 3 Blocks being Blocks A,B & C on 6 floors all resident areas, equally East Block broken down into 3 Blocks D,E, & F, on 7 floors again all resident areas the makeup of these areas, Rooms, kitchens, Studio's and Penthouses (in the East Block only).

Vine Court Installation Profile:-

East Block – 3 Blocks D, E & F 21 IMEC Network Panels Linking 414 Rooms – (Network & Power) we wired the power to 21 number IMEC Panels that were networked to each other to be viewed on the Data Manager Main panels Located in Both East Ground Floor main Entrance and the West Main Reception.

West Block – 3 Blocks A, B & C 25 IMEC Network Panels Linking 451 Rooms – (Network & Power) we wired the power to 25 number IMEC Panels that were networked to each other to be viewed on the Data Manager Main panels Located in Both East Ground Floor main Entrance and the West Main Reception.

System Overview Profile:-

The System across the 2 Buildings is fully Automated, and can be changed and modified at all times, the system is bespoke to Student Resident Halls, and is being wide spread across all Public & Educational Sectors, we IED are one of the first Companies to install this system in Liverpool, a fact we are proud to say given this was the first time we have in our history installed this type on intelligent system whereby we have received from the UoL Management great praise and accolades from our site performance.

UNIVERSITY OF LIVERPOOL - STUDENT HALLS

This system was an "add on" to the building that was only 10 years old, the system addition was to support the fire alarm as life safety as there was no internal Resident room/ Kitchen/Penthouses or Studio's gas alarm due to the gas within the A/C Cassettes within each room.





**I.E.D.
Installations
Limited**

**Committed to
Service**

ROYAL UNIVERSITY HOSPITAL

➤ **Project Value: £350,000.00**

➤ **Project Type: Healthcare**

➤ **Project Aim: Refurbishment**

➤ **Project Completion: June 2011**

RADIOLOGY DEPARTMENT

ROYAL UNIVERSITY HOSPITAL - RADIOLOGY DEPT.

The remodelling of the existing radiology area to allow for the new systems for x ray, and scanning.

The electrical systems were derived from existing distribution services to accept the new requirements to the client's standards.

- | | |
|----------------------|--------------------------|
| ❑ Mains Distribution | ❑ Door & Video Access |
| ❑ General Lighting | ❑ Pan & Tilt Cameras |
| ❑ Emergency Lighting | ❑ Voice & Data System |
| ❑ LV Power | ❑ Nurse/Staff Attack |
| ❑ Fire Alarms | ❑ TV/Satellite System |
| ❑ Cable Management | ❑ Gas/Medical Gas System |

230v and 400v systems were installed to receive the specialist kit from radiology suppliers.

The Royal Liverpool and
Broadgreen University Hospitals



NHS Trust





**I.E.D.
Installations
Limited**

**Committed to
Service**

UOL LV Interconnectors

- Project Value: £354,000
- Project Type: Electrical Installation
- Project Aim: Installation of Sub Mains
- Project Completion: October 2017

UOL LV Interconnectors

IED were employed by the University of Liverpool to upgrade the LV interconnection resilience cabling for part of the campus. As part of the works, IED carried out the civil engineering element of the works as the new cabling was to be installed underground at car parks, foot paths and roads. The project needed lots of planning and programming, as liaison with the university was key, due to the fact we were removing car parking bays, closing roads and closing foot paths.

As part of the works, the University of Liverpool also employed IED to install new 11kV HV cabling to parts of the campus, install a new switchboard and install new fibre optic cabling to part of the campus. Once all cabling works were complete, all roads, car parks and foot paths needed to be reinstated back to full operational use.

Works included but were not limited to the following:

- Installation of new trenching and ducting for new HV and LV cabling
- Removal of spoil in car parks, foot paths and roads
- Installation of HV cabling to HV switch rooms and transformer locations
- Installation of LV interconnection cabling to LV switch rooms
- Termination of new LV interconnection cabling
- Shutdowns of campus to changeover LV interconnection supplies
- Installation of new LV switchboard to 1 area of campus
- Install of new fibre optic cabling
- Installation on new tarmac to roads and surfaces to make good
- Completion of civil works and making good

UOL LV Interconnectors





I.E.D.Installations Limited - Committed to Service



UOL LV Interconnectors



**I.E.D.
Installations
Limited**

**Committed to
Service**

UNIVERSITY OF LIVERPOOL

- **Project Value: £350,000.00**
- **Project Type: Academic**
- **Project Aim: Refurbishment**
- **Project Completion: 2013**

SCHOOL OF ARTS

IED were appointed as the preferred electrical contractor for this project for the services required under the formal tender process.

The works were undertaken throughout the complex during the summer of 2013.

The project was delivered to the client as per the design and the university guidelines.

- ❖ Mains Distribution
- ❖ General Lighting
- ❖ Emergency Lighting
- ❖ LV Power
- ❖ Fire Alarms
- ❖ Cable Management
- ❖ Voice & Data
- ❖ Security System

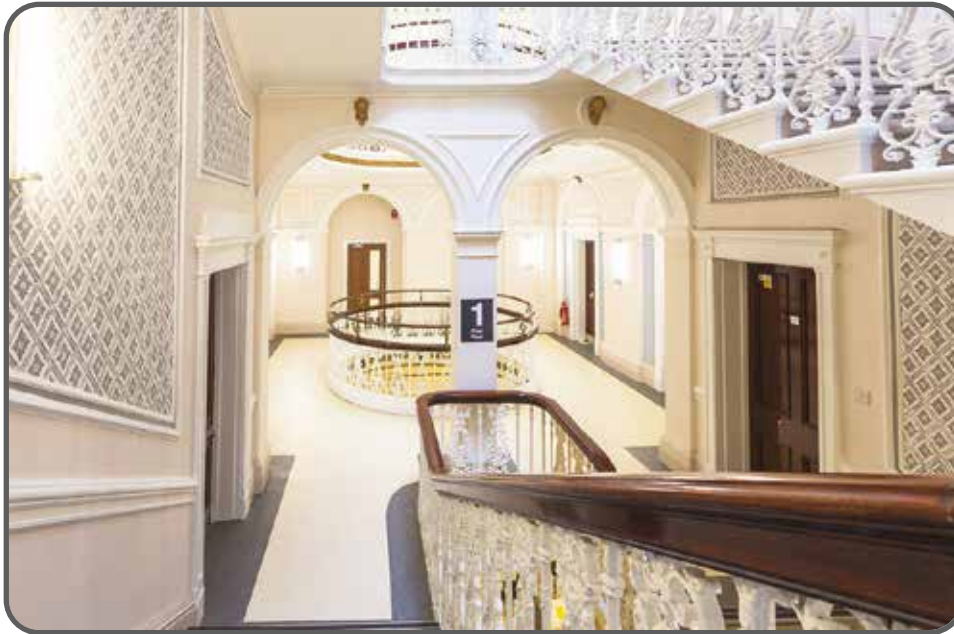


UNIVERSITY OF
LIVERPOOL

UNIVERSITY OF LIVERPOOL SCHOOL OF ARTS

The images below and overleaf illustrate The School of Arts on project completion.





**I.E.D.
Installations
Limited**

Committed to Service

I.E.D. Installations Limited - Committed to Service



UNIVERSITY OF LIVERPOOL SCHOOL OF ARTS



I.E.D.
Installations
Limited

Committed to
Service

ROYAL LIVERPOOL HOSPITAL

- **Project Value: £350,000.00**
- **Project Type: Healthcare**
- **Project Aim: Refurbishment**
- **Project Completion: June 2011**

CRITICAL CARE UNIT

IED were appointed as the preferred electrical contractor for this project for the services required under the formal tender process.

The removal of the existing ward and clinic areas services were carried out to allow for the refurbishment to include the extended Intensive Care Department.

The works was completed in phases to allow the hospital to get early usage to alleviate emergency congestion.

The Critical Care Unit was increased by a further seven isolated positions and technically is advanced to give ultimate care to the patients.

The electrical and associated specialist systems were delivered with the particular requirements that the department very much needed.

Individual bedhead medical services, isolation ward security, scene setting lighting and technically supported power supply systems (IPS) were installed as part of the area design.

- ❖ Mains Distribution
- ❖ General Lighting
- ❖ Emergency Lighting
- ❖ LV Power
- ❖ Fire Alarms
- ❖ Cable Management
- ❖ Door & Video Access

ROYAL LIVERPOOL HOSPITAL - CRITICAL CARE UNIT

The images below illustrate The Critical Care Unit on project completion.

The Royal Liverpool and Broadgreen University Hospitals
NHS Trust



- ❖ Pan & Tilt Cameras
- ❖ Voice & Data System
- ❖ Nurse/Staff Attack
- ❖ TV/Satellite System



**I.E.D.
Installations
Limited**

**Committed to
Service**

DUNES LEISURE CENTRE, SOUTHPORT

- Project Value: £300,000.00
- Project Type: Sports & Leisure
- Project Aim: New Build
- Project Completion: June 2007

DUNES LEISURE CENTRE

The Dunes is a multi pool swimming and gym facility in Southport.

The electrical services installation was undertaken with IP ratings and COSHH regulations at the forefront of the design.

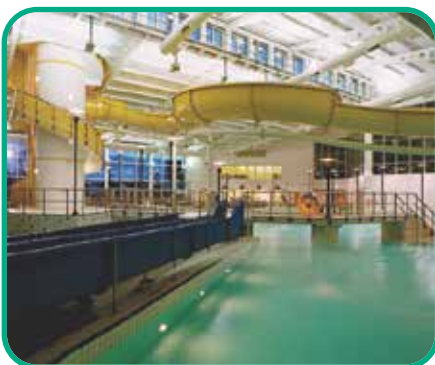
All services to the pool and the public areas were installed to the clients requirements and architectural aesthetics.

- ❏ Mains Distribution
- ❏ General Lighting
- ❏ Emergency Lighting
- ❏ LV Power



DUNES LEISURE CENTRE, SOUTHPORT

The images below illustrate Dunes Splash World on completion.





**I.E.D.
Installations
Limited**

**Committed to
Service**

HOPE UNIVERSITY CORNERSTONE BUILDING

- Project Value: £310,000
- Project Type: School Refurbishment
- Project Aim: School Facilities Upgrade
- Project Completion: October 2018

HOPE UNIVERSITY CORNERSTONE BUILDING

IED Installations were appointed to carry out an upgrade and refurbishment of the schools class facilities alongside the kitchen and dining facilities.

The project consisted of the following:

- ❑ Workshops
- ❑ Classrooms
- ❑ Corridors
- ❑ Refectory
- ❑ Kitchen
- ❑ Entrance Area
- ❑ **All the areas included the following works:**
- ❑ Lighting/Lighting Controls
- ❑ Small Power
- ❑ New DB's
- ❑ Fire Alarms
- ❑ CCTV
- ❑ Intruder Alarms
- ❑ Data

HOPE UNIVERSITY CORNERSTONE BUILDING





HOPE UNIVERSITY CORNERSTONE BUILDING



**I.E.D.
Installations
Limited**

**Committed to
Service**

HAROLD COHEN LIBRARY

- Project Value: £310,000.00
- Project Type: Refurbishment
- Project Aim: Upgrading student facilities
- Project Completion: October 2014

HAROLD COHEN LIBRARY

I.E.D Installations carried out electrical works to the ground floor, 1st floor, stack 6, stack 7 and stack 8 of Harold Cohen. All other parts of the library remained live whilst works were ongoing.

We installed new power, lighting, data, fire alarm system and CCTV system to the refurbished areas. Working for main contractor Aspect construction in close co-ordination with University of Liverpool and Mouchel.

The works consisted:

- ✦ Mains Distribution
- ✦ General Lighting
- ✦ Emergency Lighting
- ✦ LV Power
- ✦ Fire Alarms
- ✦ CCTV
- ✦ Voice and Data

UNIVERSITY OF LIVERPOOL HAROLD COHEN LIBRARY







I.E.D.Installations Limited - Committed to Service



UNIVERSITY OF LIVERPOOL HAROLD COHEN LIBRARY





I.E.D.
Installations
Limited

Committed to
Service

LANCASTER UNIVERSITY

- **Project Value: £300,000.00**
- **Project Type: Education**
- **Project Aim: New Build**
- **Project Completion: June 2008**

LANCASTER UNIVERSITY

IED were appointed as the preferred electrical contractor for this project for the services required under the formal tender process.

The building is a two storey state of the arts teaching block within the confines of Lancaster university main campus.

The installation comprised of a addressable dali lighting control system that also controlled the audio visual teaching walls and the mechanical ventilation systems.

The life safety systems I.E. Fire alarms, disabled refuge were are configured to sit on the existing university site network, reporting back to a gatehouse over one mile away.

- ❖ Mains Distribution
- ❖ General Lighting
- ❖ Emergency Lighting
- ❖ LV Power
- ❖ Fire Alarms
- ❖ Cable Management
- ❖ Lightning Protection
- ❖ Door & Video Access
- ❖ Pan & Tilt Cameras
- ❖ Voice & Data System



LANCASTER UNIVERSITY, POST GRAD STATISTICS

The images below illustrate the Post Grad Statistics Dept. on project completion.





**I.E.D.
Installations
Limited**

**Committed to
Service**

ALL SAINTS SCHOOL, UPTON.

- **Project Value: £300,000.00**
- **Project Type: Education**
- **Project Aim: New Build**
- **Project Completion: January 2011**

ALL SAINTS SCHOOL, UPTON.

Upton All Saints is a single storey building with feature Japanese gardens lit up to give a gentle subtle feeling.

The classrooms are all different shapes and sizes with White Boards fitted in line with the latest standards a school generally sets.

- ❏ **Mains Distribution**
- ❏ **General Lighting**
- ❏ **Emergency Lighting**
- ❏ **LV Power**
- ❏ **Fire Alarms**
- ❏ **Cable Management**
- ❏ **Lightning Protection**
- ❏ **Door & Video Access**
- ❏ **Pan & Tilt Cameras**
- ❏ **TV/Satellite System**

ALL SAINTS SCHOOL, UPTON.

The images below illustrate All Saints School on project completion.





**I.E.D.
Installations
Limited**

**Committed to
Service**

Royal Court Theatre - Act 3

- Project Value: £250,000
- Project Type: Refurbishment
- Project Aim: Facilities Refurbishment
- Project Completion: January 2018

Royal Court Theatre - Act 3

The project at The Royal Court Theatre - Act 3, Liverpool consisted of the refurbishment of the following areas:

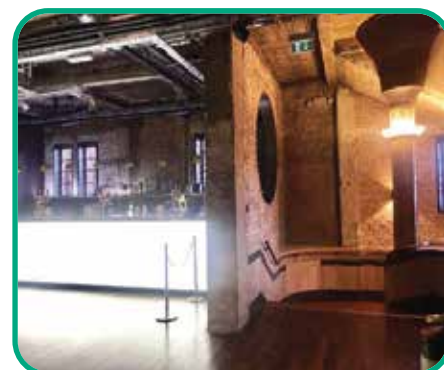
Dressing rooms, corridors, staircases, 3rd floor bar and seating area, basement bar, comedy club venue and new kitchen.

Works included but were not limited to the following:

- ❑ New lighting to all areas
- ❑ Emergency lighting to all areas
- ❑ Small power
- ❑ Fire alarms
- ❑ CCTV
- ❑ Intruder alarm
- ❑ Door access
- ❑ Data installation

**LIVERPOOL'S
ROYAL
COURT**

Royal Court Theatre Liverpool - Act 3

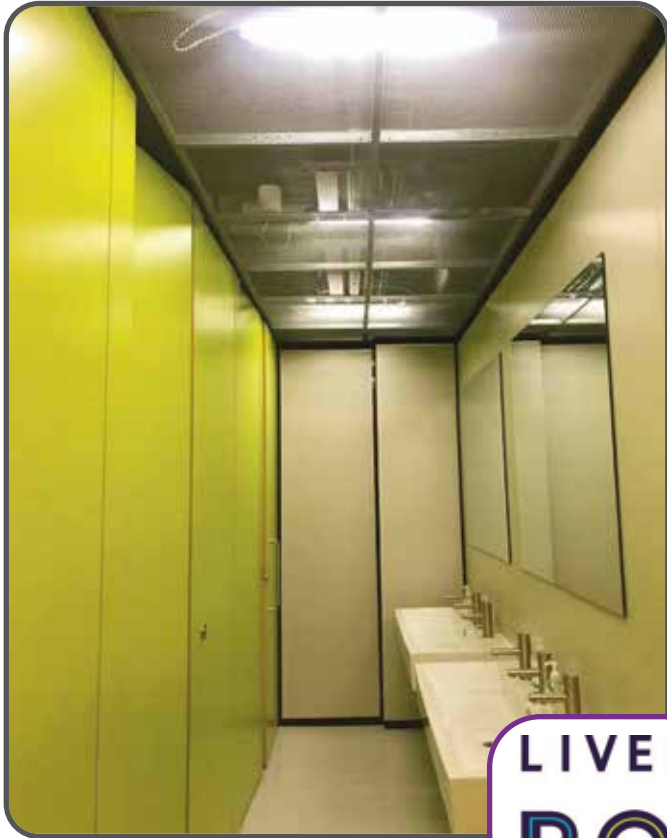




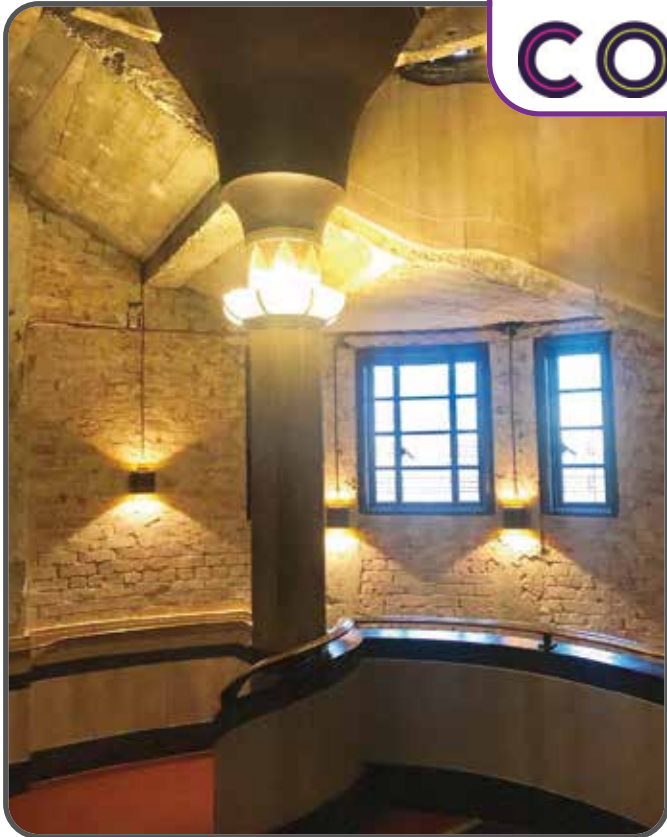
LIVERPOOL'S
ROYAL
COURT



Royal Court Theatre - Act 3



LIVERPOOL'S
ROYAL
COURT



I.E.D. Installations Limited - Committed to Service



**I.E.D.
Installations
Limited**

**Committed to
Service**

EVERTON F.C. - FINCH FARM TRAINING GROUND

- Project Value: £200,000
- Project Type: Refurbishment
- Project Aim: Academy Refurbishment
- Project Completion: November 2018

EVERTON F.C. - FINCH FARM TRAINING COMPLEX

I.E.D. were the preferred supplier to undertake the refurbishment of the under 23 changing rooms, shower rooms physio rooms, media centre, corridors offices and family room - all part of the academy building.

The project consisted of the following:

- Lighting including controls
- Emergency lighting
- Small power
- Data cabling
- Fire alarm



EVERTON F.C. - FINCH FARM TRAINING COMPLEX





I.E.D.
Installations
Limited

Committed to
Service

KILLER INK - VENTURE POINT, LIVERPOOL.

- **Project Value: £232,000**
- **Project Type: New Build**
- **Project Aim: Complete Electric Fit Out**
- **Project Completion: March 2019**

COMPLETE ELECTRICAL FIT OUT

The construction of a new warehouse and office development located within the Speke area of Liverpool. The development will be located on the Venture Point West estate. The Warehouse and Office was constructed from a steel portal frame structure which was over cladded, there was a portion of curtain walling to the East, South and West elevations of the office building. The structural wall between the office space and warehouse was constructed from dense concrete block.

The warehouse consisted generally of high bay racking which occupied roughly two thirds of the warehouse, there was also be a goods in area and a goods out area to the East elevation. In between these two areas a single storey timber construction comprising of an Accessible WC, Warehouse Office and a Manager's Office.

This construction housed and handled the main day to day operation of the warehouse and as such was serviced to accommodate the activities which will be undertaken.

The adjoining main office building was of a two storey construction, on the ground floor the main welfare facilities were housed along with some office space and the main entrance areas. The first floor contained office accommodation, server room along with a meeting rooms and some ancillary spaces.

Please see overleaf for a list of completed works:

KILLER INK - VENTURE POINT, LIVERPOOL.



❑ New mains and sub-main distribution network

❑ Small power

❑ Earthing

❑ Lighting and emergency lighting installation

❑ Structured wiring

❑ Fire Alarm

❑ Mechanical service supplies and plant supplies

❑ Disabled toilet alarm

❑ Security

❑ Lightning protection

❑ CCTV

❑ Door access







**I.E.D.
Installations
Limited**

**Committed to
Service**

YMCA LIVERPOOL

- **Project Value: £150,000.00**
- **Project Type: Accommodation**
- **Project Aim: New Build**
- **Project Completion: August 2007**

YMCA LIVERPOOL

The YMCA was built in 2007 to house young men who had become homeless.

The facility included the living quarters for the residents and communal areas for meeting and liaising.

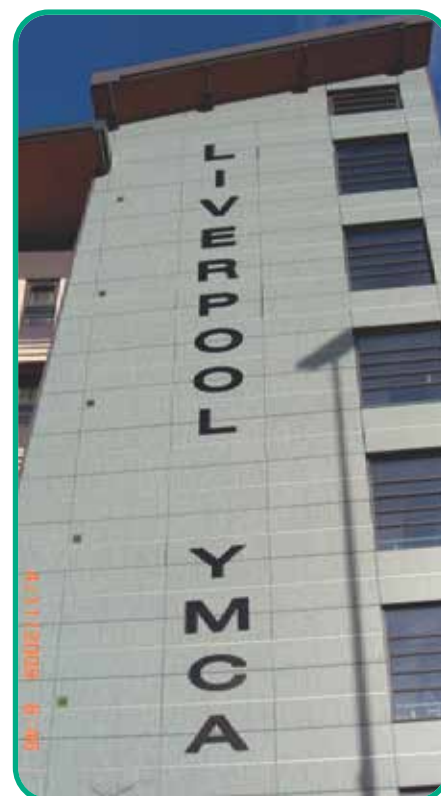
The building is a multi storey off road property close to the centre of the city centre.

- ❏ Mains Distribution
- ❏ General Lighting
- ❏ Emergency Lighting
- ❏ LV Power
- ❏ Cable Management



YMCA LIVERPOOL

The images below illustrate The YMCA on project completion.





I.E.D.
Installations
Limited

Committed to
Service

ST. HUGHS, LIVERPOOL.

- **Project Value: £230,000.00**
- **Project Type: Office Development**
- **Project Aim: Refurbishment**
- **Project Completion: October 2010**

ST. HUGHS, LIVERPOOL.

St Hughs is an existing office block totally stripped back to allow for a full refurbishment.

The electrical services to open plan office areas on a single floor within an occupied office block had power and lighting installed generally to the client's specification.

- ❑ **Mains Distribution**
- ❑ **General Lighting**
- ❑ **Emergency Lighting**
- ❑ **LV Power**
- ❑ **Cable Management**



The images below illustrate St.Hughs on project completion.



Exterior view of St. Hughs



The completed 2nd Floor



The fantastic exterior



The stunning interior



EVERTON F.C. - FINCH FARM TRAINING COMPLEX



**I.E.D.
Installations
Limited**

**Committed to
Service**

EVERTON FC - FINCH FARM TRAINING FACILITY

- **Project Value: £172,000**
- **Project Type: Sub Station Upgrade**
- **Project Aim: Upgrade to 1Mva**
- **Project Completion: February 2020**

NEW 1MVA SUB STATION & NEW LV SWITCH ROOM

Finch Farm is the main training facility for Everton Football club in Merseyside. It also incorporates other facilities such as an education centre, media centre and various football pitches/training pitches.

The existing sub-station was at capacity and to facilitate future expansion plans a new 1Mva sub-station and LV switch room were required.

This project incorporates the work required in relation to diverting existing cables and protecting other live services along the footpath where the new substation is being constructed.

The Scope of the Contract is to undertake the concurrent disconnection of various existing SWA cables from the existing switch panel, jointing and reconnecting to the new switch panel in the new client owned LV switch room.

The fundamental to the success of the scheme was to ensure that downtime to the facility was minimised at all times.

The works consisted of:

- ❑ 1000A LV Switch Panel
- ❑ Cable Jointing
- ❑ Lighting
- ❑ Power
- ❑ Fire Alarm

EVERTON FC - FINCH FARM TRAINING FACILITY







I.E.D.
Installations
Limited

Committed to
Service

UNIVERSITY OF LIVERPOOL - MATHS DEPT.

- Project Value: £150,000
- Project Type: Refurbishment
- Project Aim: Maths Facilities Upgrade
- Project Completion: October 2018

UNIVERSITY OF LIVERPOOL - MATHS DEPT.

IED Installations were appointed to carry out an upgrade and refurbishment of the classrooms, lecture theatre and corridors to the 1st floor and 2nd floor - this included Lighting including controls and emergency lighting.

The project consisted of the following:

- ❏ Small power
- ❏ Data cabling including new cabinets
- ❏ Fire alarm
- ❏ Lighting including controls and emergency lighting

UNIVERSITY OF LIVERPOOL - MATHS DEPT.





UNIVERSITY OF LIVERPOOL - MATHS DEPT.



**I.E.D.
Installations
Limited**

**Committed to
Service**

UNIVERSITY OF LIVERPOOL

- **Project Value: £130,000.00**
- **Project Type: Entertainment**
- **Project Aim: Refurbishment**
- **Project Completion: March 2012**

SWIMMING POOL

The refurbishment of the existing pool area to upgrade to a more efficient facility was carried out.

The design of the area was inclusive of the required IP ratings for water related projects.

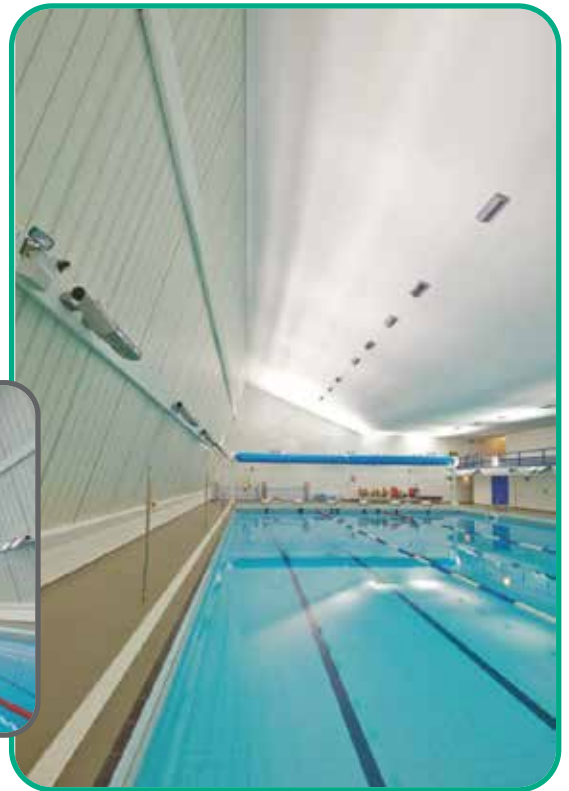
The electrical services included the general lighting and power standards set by the client.

- ❑ Mains Distribution
- ❑ General Lighting
- ❑ General Small Power
- ❑ Emergency Lighting
- ❑ LV Power,
- ❑ Cable Management
- ❑ Fire Alarms
- ❑ Security
- ❑ Voice and Data
- ❑ TV System

UNIVERSITY OF LIVERPOOL SWIMMING POOL

The images below and overleaf illustrate the pool on project completion.





I.E.D. Installations Limited - Committed to Service



UNIVERSITY OF LIVERPOOL SWIMMING POOL



**I.E.D.
Installations
Limited**

**Committed to
Service**

AVRENIM, BROADGREEN HOSPITAL, ALEXANDRA WING, WARD 7

- **Project Value: £118,000**
- **Project Type: Refurbishment**
- **Project Aim: Accommodation Refurb**
- **Project Completion: January 2020**

AVRENIM, BROADGREEN HOSPITAL, ALEXANDRA WING, WARD 7

The brief was to completely refurbish the existing ward and upgrade the facilities to create additional bed spaces which included structural alterations, electrical re-fit, new LED lighting, new flooring and suspended ceilings. Works within selected adjacent areas of Ward 7 remained occupied and in use whilst refurbishment works were in progress.

The works consisted of:

- ❑ New LED Lighting and Emergency lighting Upgrade
- ❑ Small power alterations
- ❑ Fire alarm alterations
- ❑ Door access
- ❑ Structured wiring
- ❑ New FD60 fire doors
- ❑ New nurse station
- ❑ Suspended ceilings
- ❑ Flooring
- ❑ Decorating
- ❑ Fire stopping

AVRENIM, BROADGREEN HOSPITAL, ALEXANDRA WING, WARD 7







**I.E.D.
Installations
Limited**

**Committed to
Service**

LJMU JOHN LENNON GALLERY

- **Project Value: £115,000**
- **Project Type: Electrical Installation**
- **Project Aim: Exhibition Area**
- **Project Completion: October 2018**

LJMU JOHN LENNON GALLERY

IED Installations were appointed to fit-out of the existing LG basement gallery in LJMU's Art and Design Building into the proposed X Gallery consisting of two flexible teaching / exhibition spaces with an associated lobby and store formed.

The project consisted of the following:

- ❏ **Lighting**
- ❏ **Power**
- ❏ **Fire Alarm**
- ❏ **Data**
- ❏ **Mechanical services**



LJMU JOHN LENNON GALLERY





LJMU JOHN LENNON GALLERY



**I.E.D.
Installations
Limited**

**Committed to
Service**

**Avrenim - Dental Hospital Restorative
5 & 4th Floor Corridor Refurbishment**

- **Project Value: £82,000**
- **Project Type: Refurbishment**
- **Project Aim: Upgrade working areas**
- **Project Completion: September 2019**

**Avrenim - Dental Hospital Restorative
5 & 4th Floor Corridor Refurbishment**

**Avrenim - Dental Hospital Restorative
5 & 4th Floor Corridor Refurbishment**

Restorative 5

The refurbishment of existing dental teaching examination room housing 15 dental chairs. The works comprised of site clearance and preparation works, floor finishes, decorations to new and existing plaster and timber surfaces, new suspended ceiling installation with associated work to new LED lighting, sundry fixtures and fittings and associated mechanical services.

4th Floor Corridor

The refurbishment of the University of Liverpool corridors consisting of new LED lighting, structural door openings, suspended ceilings, floor coverings and decorations.

The works consisted of:

- ❑ New LED Lighting and Emergency lighting Upgrade
- ❑ Small power alterations
- ❑ Fire alarm alterations
- ❑ Suspended ceilings
- ❑ Flooring
- ❑ Decorating







**I.E.D.
Installations
Limited**

**Committed to
Service**

ORMISTON BOLINGBROKE ACADEMY

- Project Value: £81,000
- Project Type: Refurbishment
- Project Aim: Additional Teaching Spaces
- Project Completion: November 2018

ORMISTON BOLINGBROKE ACADEMY

The project involves works associated with the modification to existing areas and the addition of new teaching spaces consisting of new build classroom extension and the conversion of the hall area to four new classrooms across two floors complete with modifications to existing teaching areas.

The works consisted of the following:

- ❑ Lighting
- ❑ Power
- ❑ Fire Alarm
- ❑ Data
- ❑ Mechanical Services



ORMISTON BOLINGBROKE ACADEMY





ORMISTON BOLINGBROKE ACADEMY



**I.E.D.
Installations
Limited**

**Committed to
Service**

AINTREE RACECOURSE, SUNDEW BAR

- **Project Value: £70,000.00**
- **Project Type: Entertainment**
- **Project Aim: Refurbishment**
- **Project Completion: March 2012**

AINTREE RACECOURSE

IED were nominated as the preferred electrical contractor for this project for the services required under the formal tender process.

The extension of the first floor bar area was added to allow for more race goers to enjoy their experience.

The bar facility was accompanied by the addition of a champagne & seafood area. Both areas are open plan and easily accessed via the main lift area or stands. General lighting within the area is recessed downlighting, with feature lighting for the bars, photographs and decorative cabinets as per the architect's design.

Small power facilities for race TV's and the bars were installed throughout the project.

- ❑ Mains Distribution
- ❑ General Lighting
- ❑ Emergency Lighting
- ❑ LV Power
- ❑ Fire Alarms
- ❑ Cable Management
- ❑ Door & Video Access
- ❑ Pan & Tilt Cameras
- ❑ Public Address System
- ❑ TV/Satellite System
- ❑ Air Conditioning
- ❑ Sanitation
- ❑ Heating & Ventilation

SUNDEW BAR, AINTREE RACECOURSE

The images below and overleaf illustrate the Sundew Bar on project completion.





I.E.D.Installations Limited - Committed to Service



SUNDEW BAR, AINTREE RACECOURSE, LIVERPOOL



**I.E.D.
Installations
Limited**

**Committed to
Service**

UNIVERSITY OF LIVERPOOL

- **Project Value: £71,000**
- **Project Type: Refurbishment**
- **Project Aim: Refurb/Change of Use**
- **Project Completion: September 2019**

UNIVERSITY OF LIVERPOOL

Whelan Building

The refurbishment of existing seminar room 101A/B to form new clinical inspection / practical use facility, Whelan Building, North Campus.

Works comprised of site clearance and preparation works, floor finishes, decorations to new and existing plaster and timber surfaces, new suspended ceiling installation with associated work to lighting, sundry fixtures and fittings and associated mechanical and electrical services.

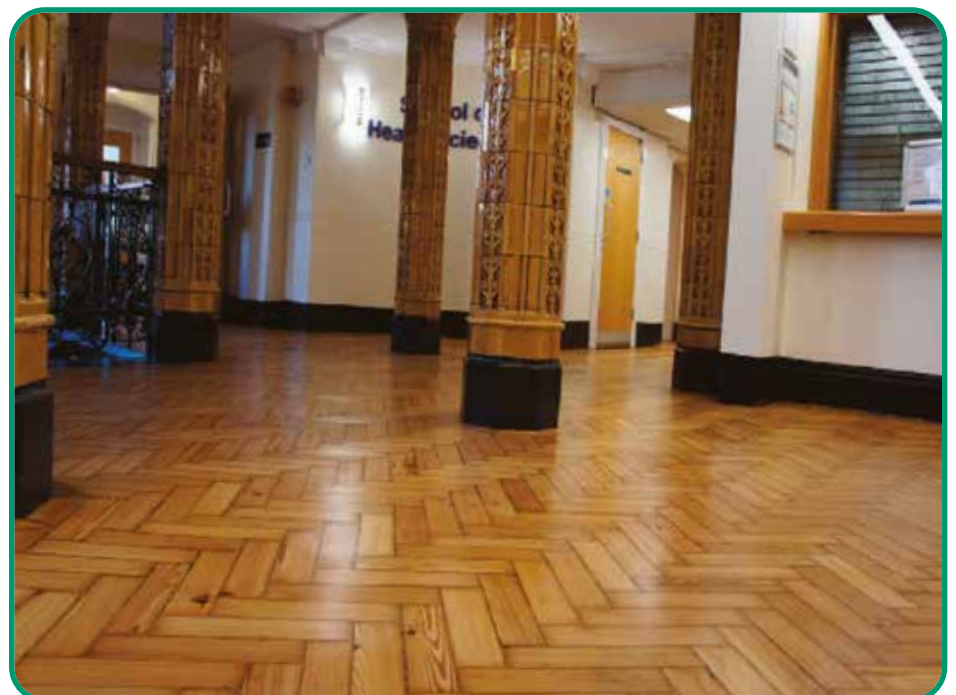
Thompson Yates Building

The refurbishment of main entrance area parquet flooring & refurbishment of corridors consisting of new LED lighting, suspended ceilings and decorations.

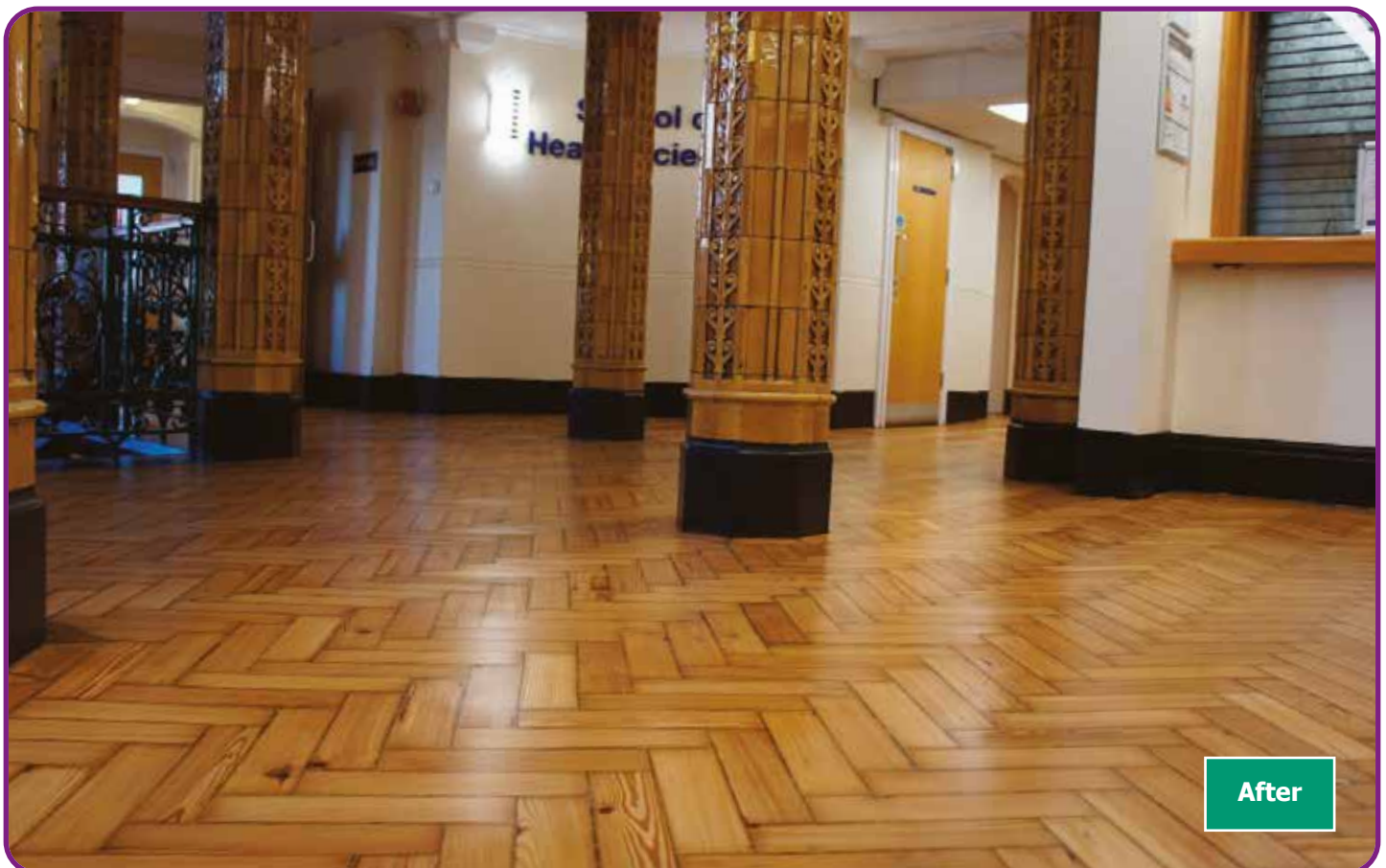
Works consisted of:

- ❑ New LED Lighting and Emergency lighting Upgrade
- ❑ Small power alterations
- ❑ Fire alarm alterations
- ❑ Structured wiring
- ❑ Suspended Ceilings
- ❑ Flooring
- ❑ Parquet flooring repairs
- ❑ Decorating

UNIVERSITY OF LIVERPOOL











**I.E.D.
Installations
Limited**

**Committed to
Service**

AAH LEEDS

- Project Value: £62,000
- Project Type: Refurbishment
- Project Aim: Refurb of Power/Lighting
- Project Completion: September 2017

AAH LEEDS

IED were employed by AAH pharmaceuticals to carry out various works to the lighting and power installation at their Leeds branch. IED used its years of experience working with the client and site teams to develop a safe system of work and bespoke design for the works.

Works at AAH Leeds were challenging as we were working in a live factory environment so had to ensure all AAH working service remained live and unaffected during our works, and also we had to ensure that at the end of each working day all electrical services were left in a correct and safe manner.

Works included but were not limited to the following:

- Design and installation of new high level LED lighting to rear of factory unit
- Installation of electrical supplies for battery changing units
- Supply and installation of new three phase supply to new stand alone refrigeration unit
- Full lighting and power installation to CD room based in warehouse
- Installation of new temporary lighting to above and below new bespoke mezzanine area.

AAH LEEDS





**I.E.D.
Installations
Limited**

**Committed to
Service**

Finch Farm - Everton F.C.

- **Project Value: £60,000**
- **Project Type: Electrical Improvements**
- **Project Aim: Training Facilities Upgrade**
- **Project Completion: September 2017**

Finch Farm - Everton F.C.

IED were employed to carry out the electrical works to the refurbished kitchen and gymnasium area at the USM Finch Farm complex.

The works were to take place in a live building, with a tight programme with all works needing to be complete during the close season (6 weeks).

The aim of the project was to improve the 1st team canteen and dining area and 1st team gymnasium prior to the start of the 2017/18 season.

Works included but were not limited to the following:

- ✦ Install new power for servery area to the kitchen
- ✦ Install new supplies on the roof for extract fans
- ✦ Install new general lighting and power to the new 1st team canteen area
- ✦ Carry out door access alterations
- ✦ Install new power supplies to new gym machines
- ✦ Install new lighting to gymnasium
- ✦ Alter existing switching to suit new layouts.



Finch Farm - Everton F.C.



ROY CASTLE CENTRE, LIVERPOOL.

- **Project Value: £40,000.00**
- **Project Type: Office Development**
- **Project Aim: Refurbishment**
- **Project Completion: Sept 2008**

ROY CASTLE CENTRE

This is an office redevelopment to improve the workspace for staff and extend the storage capacity for medical and confidential filing within an expanding support service.



- Mains Distribution
- General Lighting
- Emergency Lighting
- LV Power
- Fire Alarms
- Cable Management
- Door & Video Access
- Pan & Tilt Cameras
- Voice & Data System
- Nurse/Staff Attack

AINTREE RACECOURSE, SADDLE BAR

- **Project Value: £40,000.00**
- **Project Type: Entertainment**
- **Project Aim: New Build**
- **Project Completion: April 2007**

AINTREE RACECOURSE, SADDLE BAR

The Saddle Bar is situated between the Earl of Derby and the Lord Sefton Stands.

The glazed open plan heated area has spectacular viewing of both the racecourse and the parade ring for the winning horses.

- Mains Distribution
- General Lighting
- Emergency Lighting
- LV Power
- Cable Management



**I.E.D.
Installations
Limited**

**Committed to
Service**



**I.E.D.
Installations
Limited**

**Committed to
Service**

THE BLUE COAT SCHOOL - SHIRLEY HALL

- Project Value: £27,000
- Project Type: Educational
- Project Aim: Electrical Improvements
- Project Completion: September 2019

THE BLUE COAT SCHOOL - SHIRLEY HALL

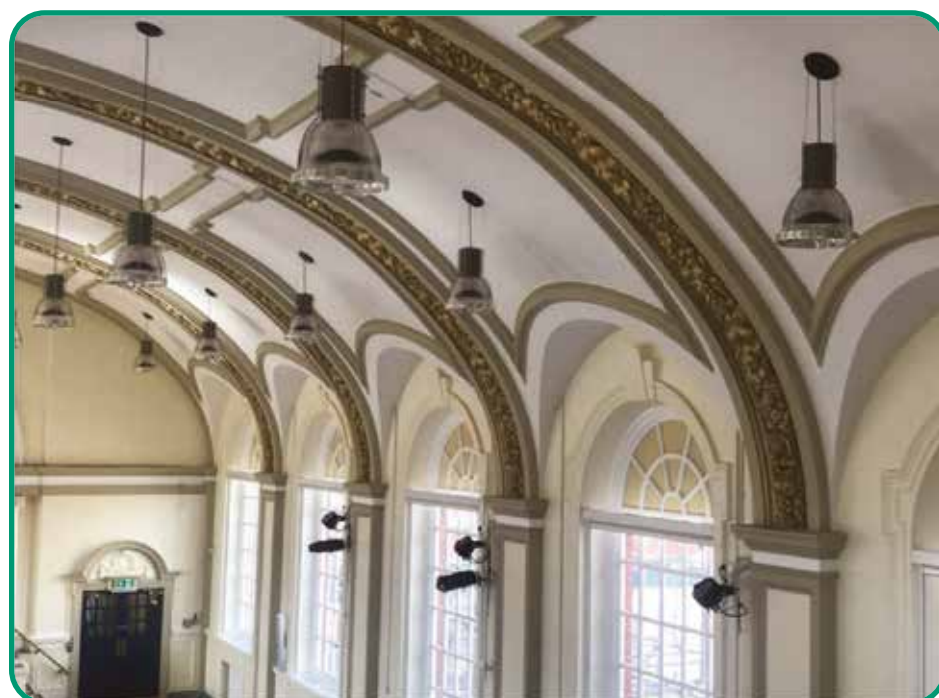
I.E.D. completed the installation of the High Bay Lighting, the Full Hall Data Installation and Supply the Containment and Supplies to the AV System, this was a prestige installation haven to maintain the high standard of the original ceilings as you can see from our Pics, the entire installation was fed from the apex loft space down the high ceilings.

The project building duration was 24 weeks, we completed all our works in 5 weeks, working in conjunction with Hightown Builders.



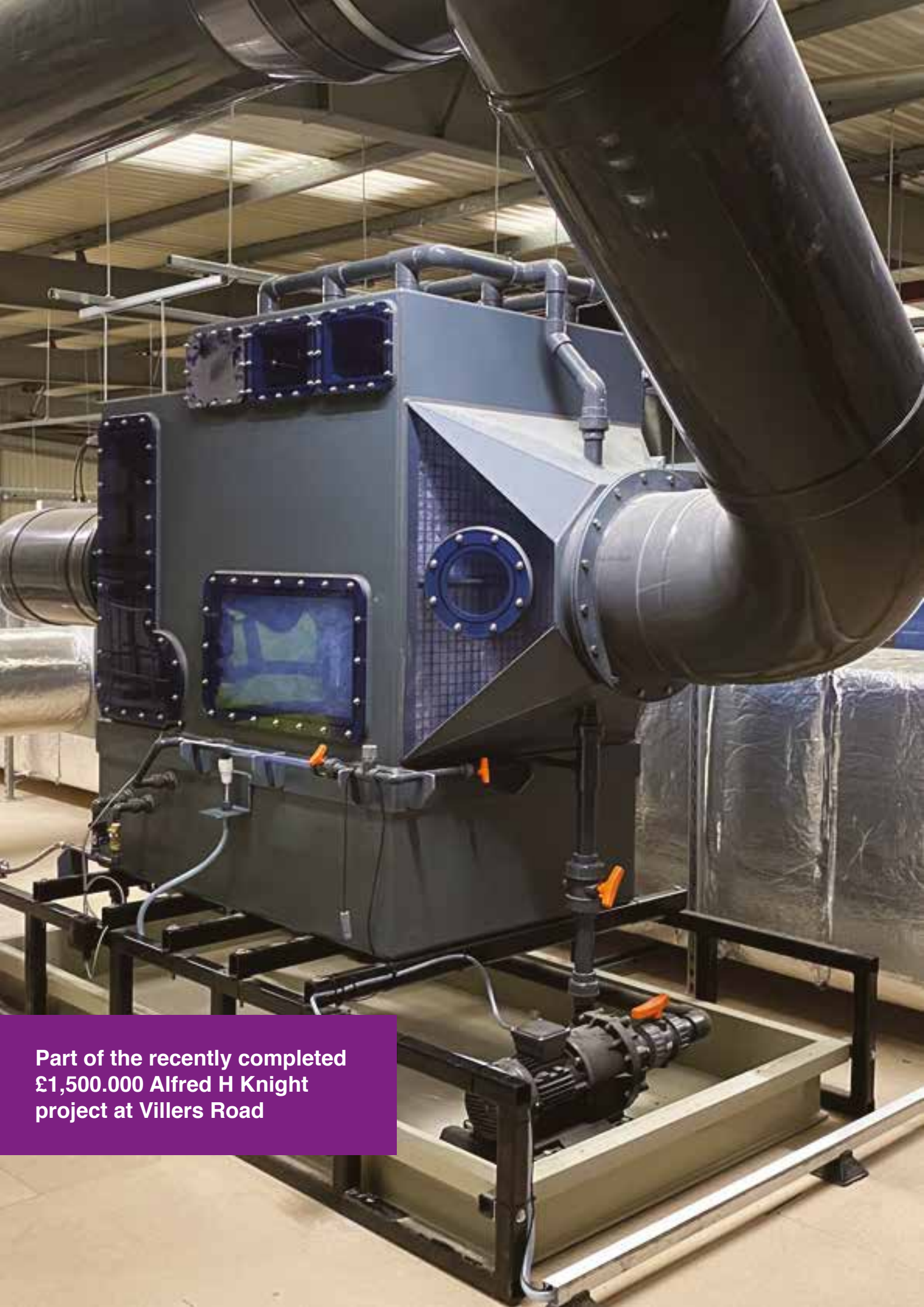
THE
BLUE COAT
SCHOOL

THE BLUE COAT SCHOOL - SHIRLEY HALL





THE BLUE COAT SCHOOL - SHIRLEY HALL



**Part of the recently completed
£1,500.000 Alfred H Knight
project at Villers Road**

Main Services

Electrical:

- Design and consultation
- LV distribution and earthing
- General lighting
- Emergency lighting
- LV power
- Fire alarms
- Cable management
- Generator and UPS setups
- HVAC wiring
- Hazardous areas installations
- Lightning protection

Data:

- Network design and installation
- Category 5e/Category 6 structured cabling
- Category 5e/Category 6 termination
- Testing & certification
- Fibre optic backbone cabling, Singlemode and Multimode
- Fibre optic, termination, testing and certification
- Cabinet/Rack/Mux/arrangements
- Active equipment, design installation and programming

Voice:

- Distribution cabling internal/external
- Line wiring circuits and outlets
- DDF coax installation
- TJF design installations
- Installation/maintenance of stand-alone voice and data switches
- Installation/maintenance of integrated telephony networks
- Line and switch fault finding and inspection
- UPS arrangements

Electrical Testing & Inspection:

- 17th Edition Fixed Wire Testing
- Earth electrode/lightning protection
- Petroleum licensing inspections
- Entertainment licensing inspections
- Emergency lighting inspections
- Hazardous area inspections
- RCD testing
- Electrical installation inspections

Access Control/CCTV:

- Door access
- Video access
- Intercom
- Panic alarms
- Static cameras
- Pan and tilt cameras

Construction Services:

- Flooring
- Refurbishment
- Structural
- Partitioning
- Joinery
- Painting
- Plastering
- Plumbing

Mechanical:

- Plumbing
- Sanitation
- Heating and ventilation
- Air-Conditioning
- Pump installation
- Boiler installation



i.e.d installations limited

16 Skyhawk Avenue Dakota Business Park Liverpool L19 2QR

Telephone: 0151 427 8500 Facsimile: 0151 427 8600

email: info@ied-uk.com web: www.ied-uk.com

