



**I.E.D.  
Installations  
Limited**

**Committed to  
Service**

## SHORELINES

- **Project Value: £450,000.00**
- **Project Type: Office Development**
- **Project Aim: Refurbishment**
- **Project Completion: Dec 2012**

## SHORELINES

Shorelines, named after the road on which it resides. The existing units were transformed into developed office areas sectioned into two as per the landlords specification.

- ❑ Mains Distribution
- ❑ General Lighting
- ❑ Emergency Lighting
- ❑ LV Power
- ❑ Fire Alarms
- ❑ Cable Management
- ❑ Lightning Protection
- ❑ Door & Video Access
- ❑ Pan & Tilt Cameras
- ❑ TV/Satellite System

## SHORELINES

The images below illustrate Shorelines on project completion.



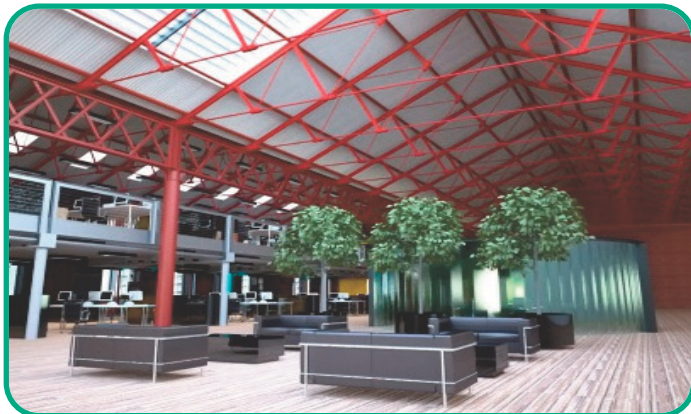




**I.E.D.  
Installations  
Limited**

**Committed to Service**

**I.E.D. Installations Limited - Committed to Service**



**SHORELINES, BIRKENHEAD.**