

Telephone: **0151 427 8500**email: **info@ied-uk.com** web: **www.ied-uk.com**

I.E.D.
Installations
Limited

Construction
Services

LIVERPOOL UNIVERSITY HOSPITALS A&E DEPARTMENT

- **Project Value: £1.7 Million**
- **Project Type: Entire Dept. Refurb**
- **Project Aim: Total Refurbishment**
- **Project Completion: January 2023**

**LIVERPOOL UNIVERSITY HOSPITALS
A&E DEPARTMENT**

The disciplines included but were not limited to:

- ❑ New Floors
- ❑ New Ceilings
- ❑ New Anti-Covid Air Tight Clerical Doors
- ❑ New Ventilation System
- ❑ All Domestic Plumbing & Pipework to include New NHS Wave on Taps
- ❑ Electrical & Data Systems
- ❑ Access Control
- ❑ CCTV
- ❑ IPS Panelling
- ❑ All Partition Walling
- ❑ New Painting
- ❑ Boxing in Joinery
- ❑ Steelwork & Ward Framing Systems
- ❑ Glazed Screens
- ❑ Wall Protection
- ❑ Fire Plan Coordination
- ❑ Full Dilapidation Surveys of the Existing M&E and Drainage Working directly with the client appointed design consultants
- ❑ Coordinate and Manage Infection Control

The project images are available to view on the following pages

LIVERPOOL UNIVERSITY HOSPITALS A&E DEPARTMENT

We completed the full A&E Strip out of the entire wards, corridors, nurse stations as our works were phased into a controlled logistical programme throughout the entire pandemic working directly with the NHS Senior Estates Directors and Department Clerical Staff, this was an ongoing logistical process we have to carefully manage as the wards and hospital remained live throughout the build, to maintain all essential and non-essential systems connected to the Hospital, also ensuring no drop in air changes to contain the health issues relating to the covid spread so as not to impound or endanger the staff and patients outside of the infection.

Whilst working with the NHS and Design Consultants special care and coordination of our works was paramount to consider infection control, this was/is a current containment issue throughout the safe use and direct care of the patients, therefore, and before commencing with our new phased works relating to Works Packages 1 & 2, we meet and discussed the cause and effect in annual meetings to consider all impacts relating to our works, the coordination of this management process has been recognised by the all Senior Clinicians, Department Heads, and all Staff over our direct control to maintain all systems whilst carrying out the refurbishments.

During our "Phased Works" the A&E Split into 2 Nr Works Packages 1 & 2 please refer to the attached Layout phased drawing to strip out all internal walls, decorations, lighting & Power, Floors, perimeter Benches containing Gas and Water, then removal of all Lab equipment dispose away from site whilst working through live wards and Corridors, whilst coordinating the traffic management on a day by day basis to have no interface with the staff and patients.

The Programme was a 14 Month turn round our disciplines for both the strip out & refurbishment were electrical Lighting & Power, Flooring, Decorations and Finishes, Joinery, Data, Domestic Water, Ventilation, IPS Panels, Access Control, CCTV, IPS Panelling, Gas we re-decorated all Corridors painting the Ceilings, re-lay the Floor and re-wired the Lighting in Power and tested and commissioned on Completion.



Liverpool University Hospitals
 NHS Foundation Trust

16 Skyhawk Avenue | Dakota Business Park | Liverpool | L19 2QR

Facsimile: **0151 427 8600**



Telephone: **0151 427 8500**

email: info@ied-uk.com web: www.ied-uk.com



**PHASES
ONE TO SIX**



16 Skyhawk Avenue | Dakota Business Park | Liverpool | L19 2QR

Facsimile: **0151 427 8600**

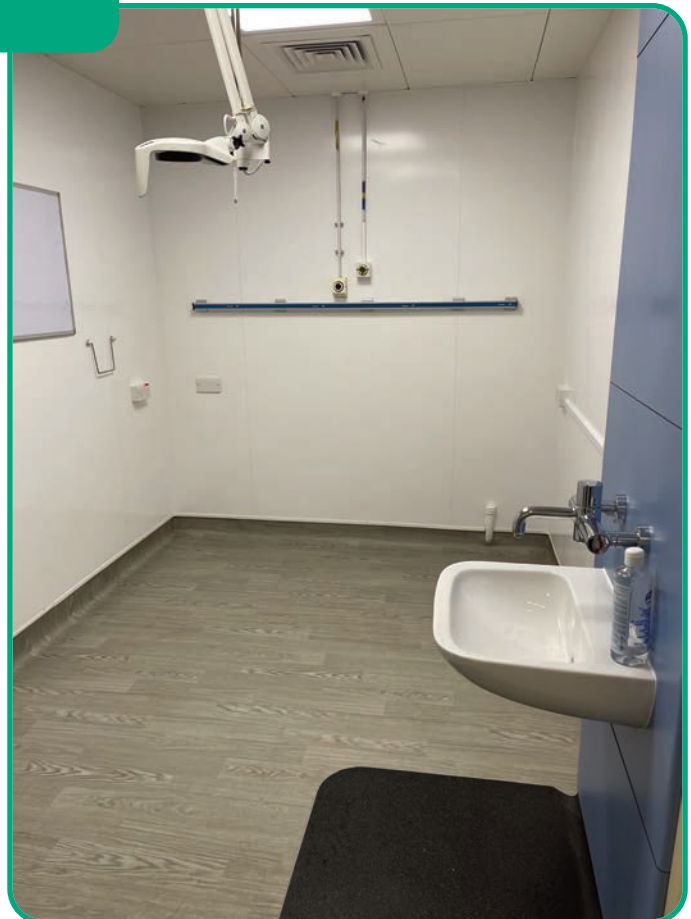


Telephone: **0151 427 8500**

email: info@ied-uk.com web: www.ied-uk.com



**PHASES
ONE TO SIX**

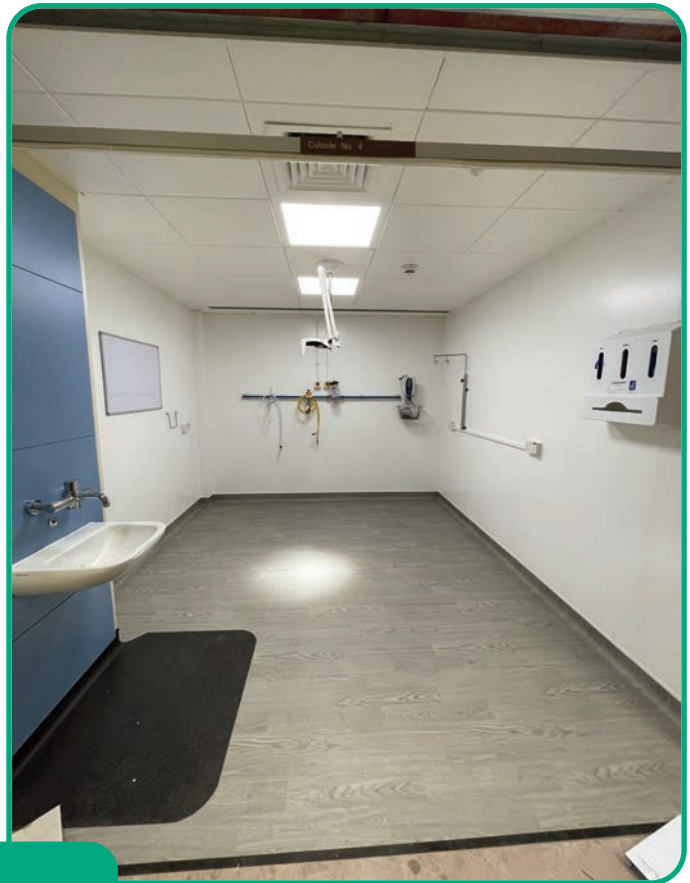


16 Skyhawk Avenue | Dakota Business Park | Liverpool | L19 2QR

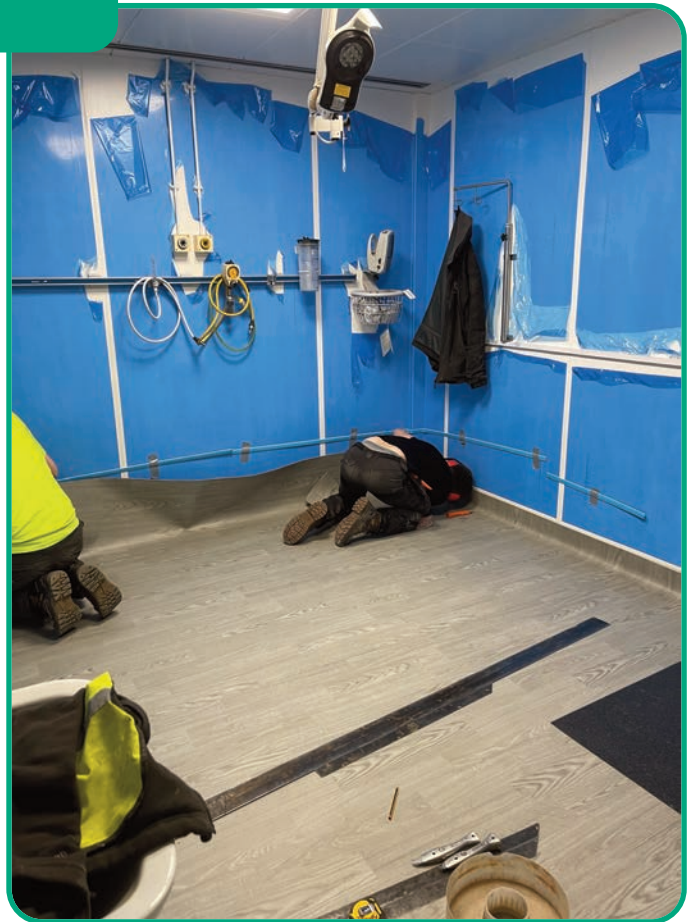
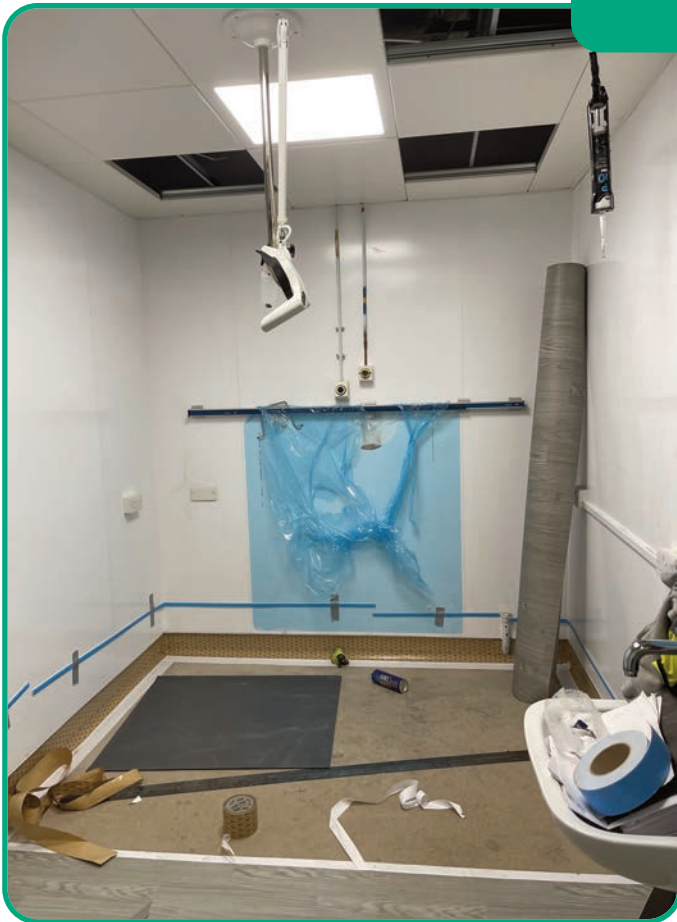
Facsimile: **0151 427 8600**

Telephone: **0151 427 8500**

email: **info@ied-uk.com** web: **www.ied-uk.com**



**PHASES
ONE TO SIX**



16 Skyhawk Avenue | Dakota Business Park | Liverpool | L19 2QR

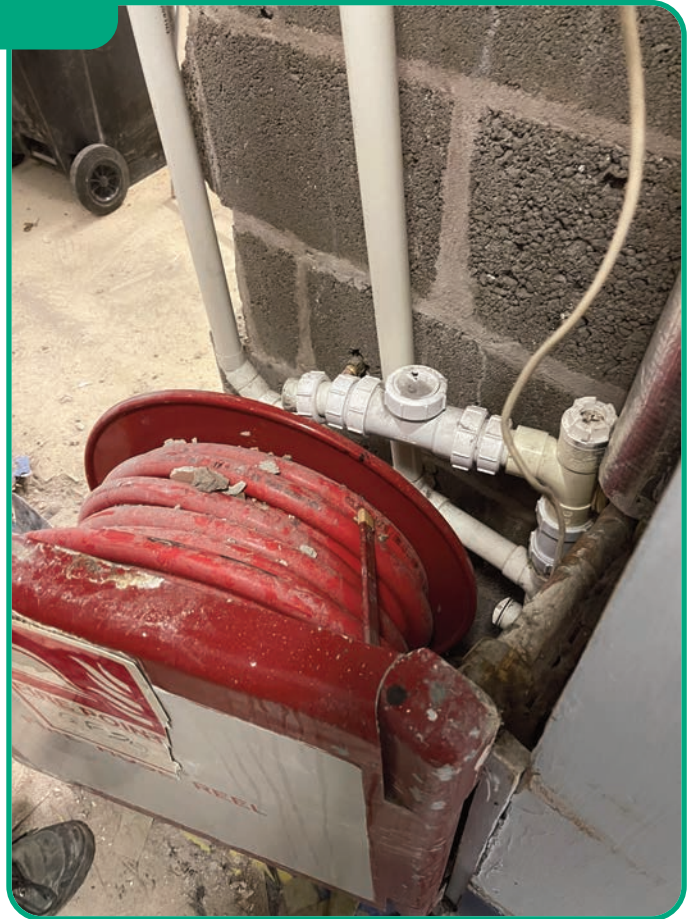
Facsimile: **0151 427 8600**

Telephone: **0151 427 8500**

email: info@ied-uk.com web: www.ied-uk.com



**PHASES
ONE TO SIX**

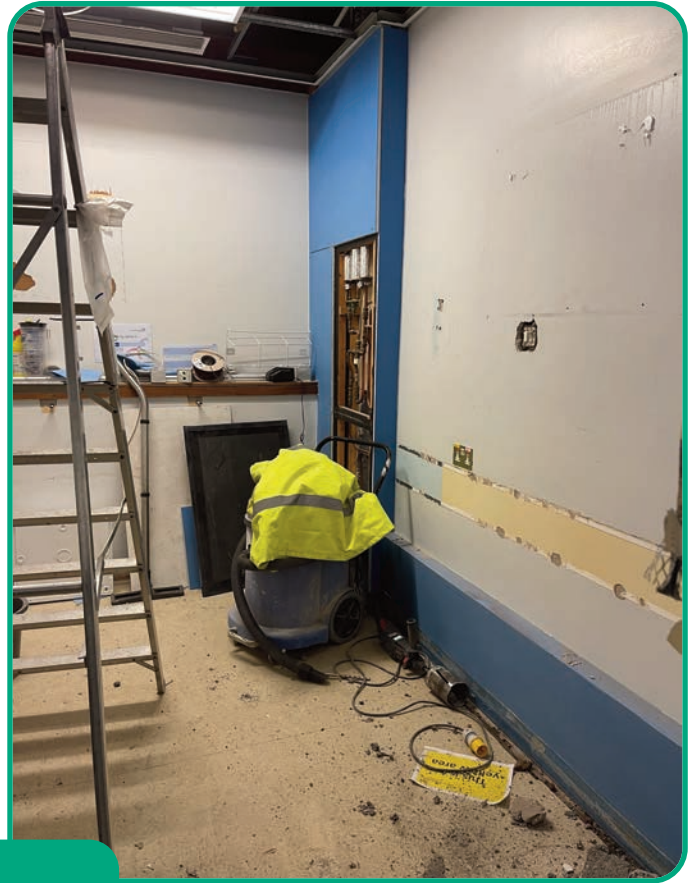


16 Skyhawk Avenue | Dakota Business Park | Liverpool | L19 2QR

Facsimile: **0151 427 8600**

Telephone: **0151 427 8500**

email: info@ied-uk.com web: www.ied-uk.com



**PHASES
ONE TO SIX**

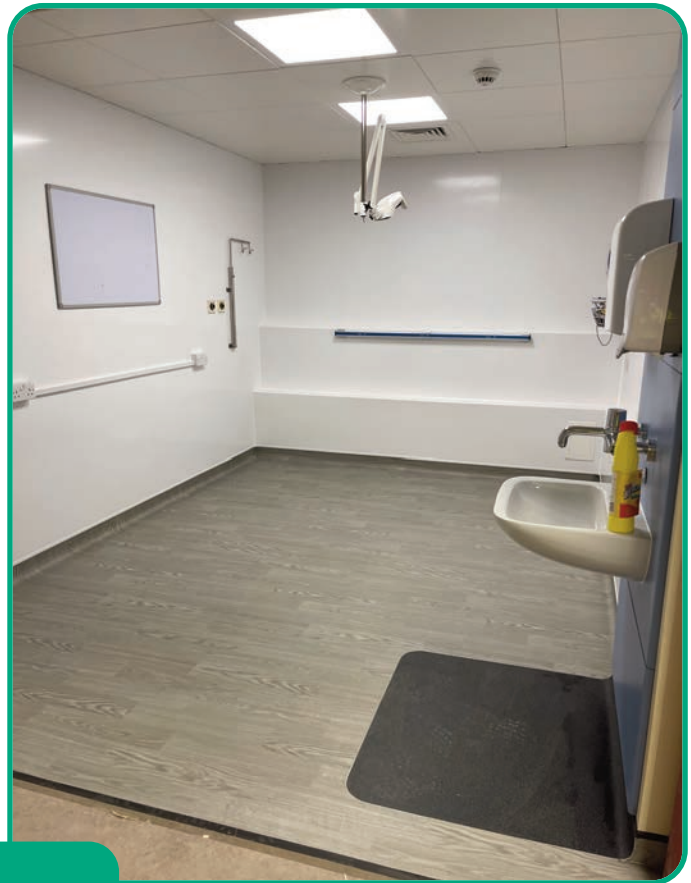


16 Skyhawk Avenue | Dakota Business Park | Liverpool | L19 2QR

Facsimile: **0151 427 8600**

Telephone: **0151 427 8500**

email: info@ied-uk.com web: www.ied-uk.com



**PHASES
ONE TO SIX**

The following pages are architectural renders of the locations project, of which there were 6 Phases in total.



**I.E.D.
Installations
Limited**

**Construction
Services**

16 Skyhawk Avenue | Dakota Business Park | Liverpool | L19 2QR

Facsimile: **0151 427 8600**

Telephone: **0151 427 8500**email: **info@ied-uk.com** web: **www.ied-uk.com**

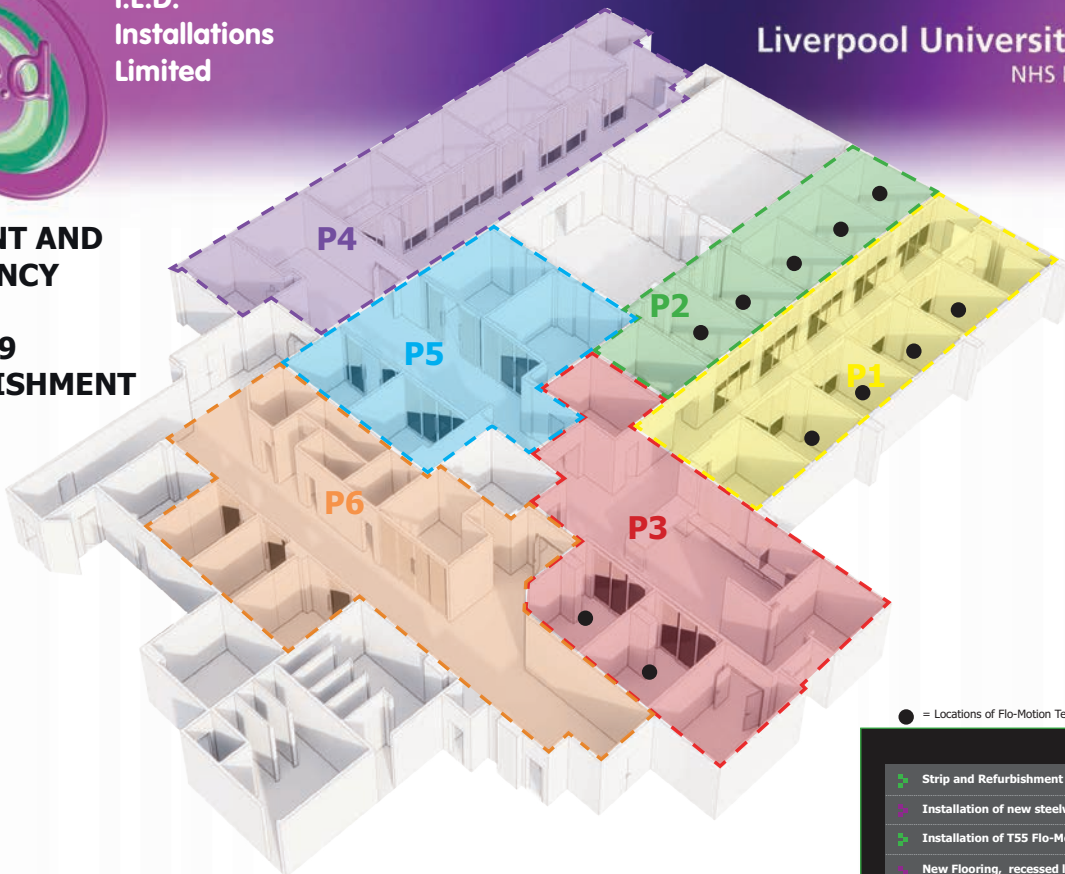
**I.E.D.
Installations
Limited**



Liverpool University Hospitals
NHS Foundation Trust

**ACCIDENT AND
EMERGENCY**

**COVID 19
REFURBISHMENT**

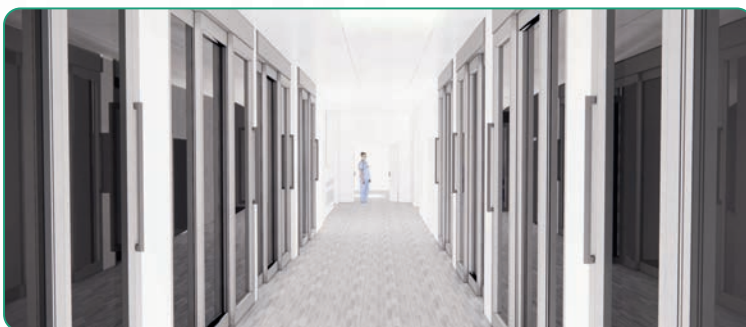


● = Locations of Flo-Motion Telescopic Type T55 doors

- Strip and Refurbishment to A+E ward bays
- Installation of new steelwork frame for AXIS doors
- Installation of T55 Flo-Motion Telescopic to P1+P2+P3
- New Flooring, recessed lighting + ventilation grills
- Installation of new IPS panels with automatic taps

Rendering by Olivia Dolan

**FLO-MOTION
TELESCOPIC TYPE T55**



I.E.D. Installations Ltd, 16 Skyhawk Avenue, Dakota Business Park, Liverpool, L19 2QR
Office Tel: 0151 427 8500 • Procurement Tel: 0151 427 8900 • Main Fax: 0151 427 8600 • Engineering Fax: 0151 427 8400

16 Skyhawk Avenue | Dakota Business Park | Liverpool | L19 2QR

Facsimile: **0151 427 8600**

Telephone: **0151 427 8500**email: **info@ied-uk.com** web: **www.ied-uk.com**

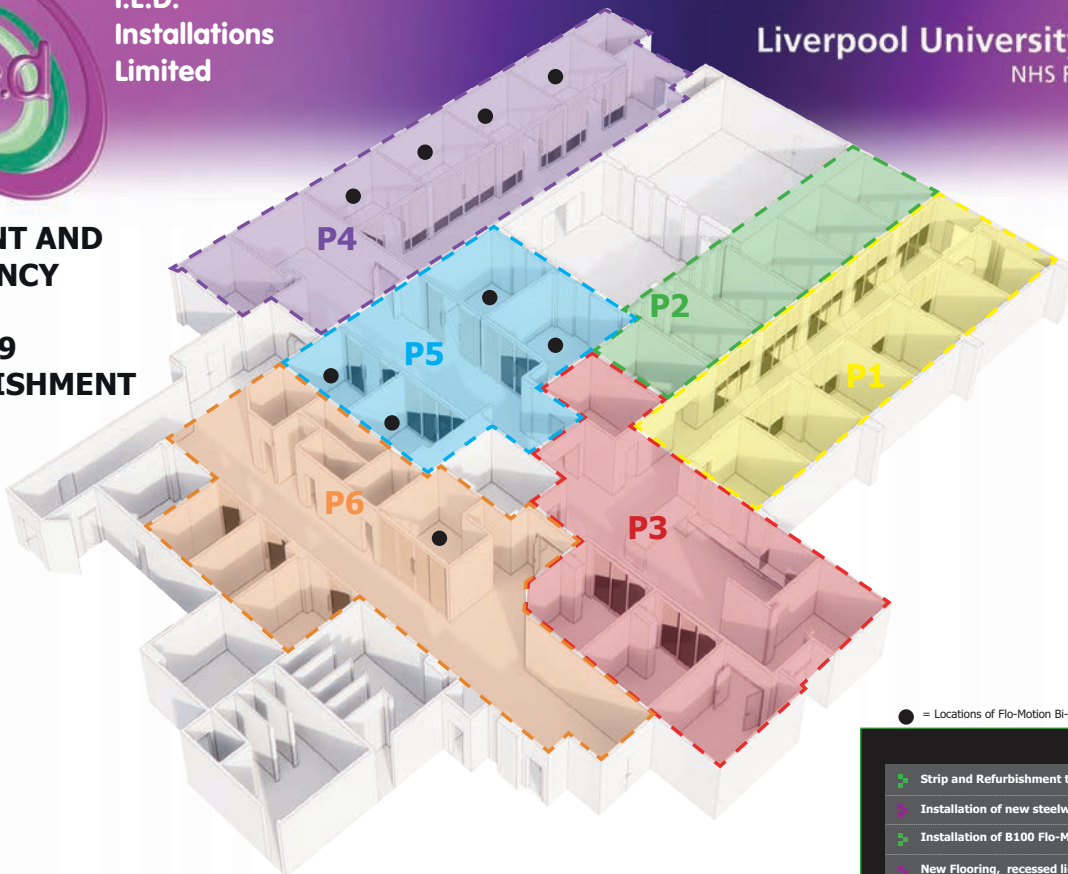
I.E.D.
Installations
Limited



Liverpool University Hospitals
NHS Foundation Trust

**ACCIDENT AND
EMERGENCY**

**COVID 19
REFURBISHMENT**



● = Locations of Flo-Motion Bi-Parting Type B100 doors

- Strip and Refurbishment to A+E ward bays
- Installation of new steelwork frame for AXIS doors
- Installation of B100 Flo-Motion Bi-Parting to P4+P5+P6
- New Flooring, recessed lighting + ventilation grills
- Installation of new IPS panels with automatic taps

Rendering by Olivia Dolan

**FLO-MOTION
BI-PARTING TYPE B100**



I.E.D. Installations Ltd, 16 Skyhawk Avenue, Dakota Business Park, Liverpool, L19 2QR
Office Tel: 0151 427 8500 • Procurement Tel: 0151 427 8900 • Main Fax: 0151 427 8600 • Engineering Fax: 0151 427 8400

16 Skyhawk Avenue | Dakota Business Park | Liverpool | L19 2QR

Facsimile: **0151 427 8600**

Telephone: **0151 427 8500**email: **info@ied-uk.com** web: **www.ied-uk.com**

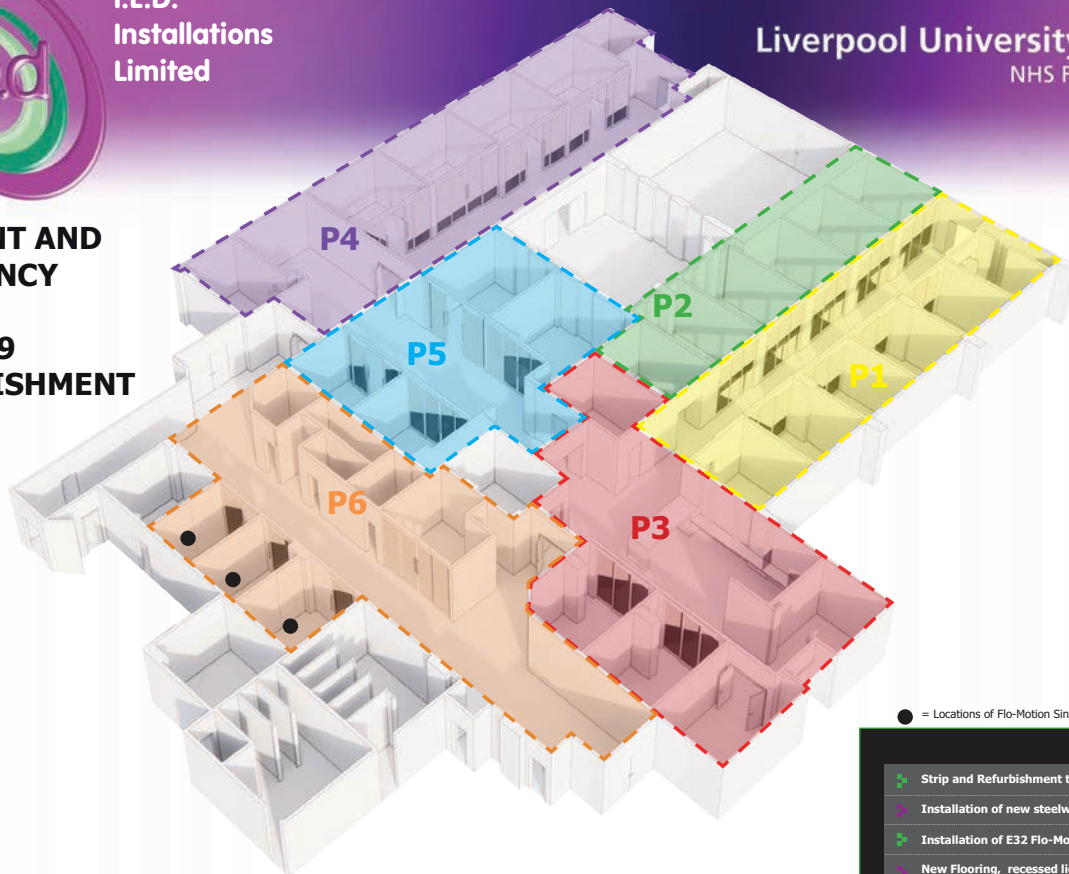
**I.E.D.
Installations
Limited**



Liverpool University Hospitals
NHS Foundation Trust

**ACCIDENT AND
EMERGENCY**

**COVID 19
REFURBISHMENT**



● = Locations of Flo-Motion Single Slide Type E32 doors

- Strip and Refurbishment to A+E ward bays
- Installation of new steelwork frame for AXIS doors
- Installation of E32 Flo-Motion Single slide doors to P6
- New Flooring, recessed lighting + ventilation grills
- Installation of new IPS panels with automatic taps

Rendering by Olivia Dolan

**FLO-MOTION
SINGLE SLIDE TYPE E32**



I.E.D. Installations Ltd, 16 Skyhawk Avenue, Dakota Business Park, Liverpool, L19 2QR
Office Tel: 0151 427 8500 • Procurement Tel: 0151 427 8900 • Main Fax: 0151 427 8600 • Engineering Fax: 0151 427 8400

16 Skyhawk Avenue | Dakota Business Park | Liverpool | L19 2QR

Facsimile: **0151 427 8600**

Telephone: **0151 427 8500**email: **info@ied-uk.com** web: **www.ied-uk.com**

**I.E.D.
Installations
Limited**



Liverpool University Hospitals
NHS Foundation Trust

**ACCIDENT AND
EMERGENCY**

**COVID 19
REFURBISHMENT**

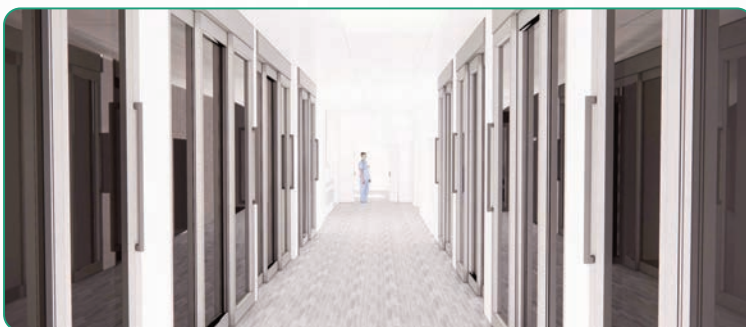


● = Locations of Flo-Motion Telescopic Type T55 doors

- Strip and Refurbishment to A+E ward bays
- Installation of new steelwork frame for AXIS doors
- Installation of T55 Flo-Motion Telescopic to P1+P2+P3
- New Flooring, recessed lighting + ventilation grills
- Installation of new IPS panels with automatic taps

Rendering by Olivia Dolan

**FLO-MOTION
TELESCOPIC TYPE T55**



I.E.D. Installations Ltd, 16 Skyhawk Avenue, Dakota Business Park, Liverpool, L19 2QR
Office Tel: 0151 427 8500 • Procurement Tel: 0151 427 8900 • Main Fax: 0151 427 8600 • Engineering Fax: 0151 427 8400

16 Skyhawk Avenue | Dakota Business Park | Liverpool | L19 2QR

Facsimile: **0151 427 8600**

Telephone: **0151 427 8500**email: **info@ied-uk.com** web: **www.ied-uk.com**

**I.E.D.
Installations
Limited**



Liverpool University Hospitals
NHS Foundation Trust

**ACCIDENT AND
EMERGENCY**

**COVID 19
REFURBISHMENT**



● = Locations of Flo-Motion Single Slide Type E32 doors

- Strip and Refurbishment to A+E ward bays
- Installation of new steelwork frame for AXIS doors
- Installation of E32 Flo-Motion Single slide doors to P6
- New Flooring, recessed lighting + ventilation grills
- Installation of new IPS panels with automatic taps

Rendering by Olivia Dolan

**FLO-MOTION
SINGLE SLIDE TYPE E32**



I.E.D. Installations Ltd, 16 Skyhawk Avenue, Dakota Business Park, Liverpool, L19 2QR
Office Tel: 0151 427 8500 • Procurement Tel: 0151 427 8900 • Main Fax: 0151 427 8600 • Engineering Fax: 0151 427 8400

16 Skyhawk Avenue | Dakota Business Park | Liverpool | L19 2QR

Facsimile: **0151 427 8600**

Telephone: **0151 427 8500**email: **info@ied-uk.com** web: **www.ied-uk.com**

I.E.D.
Installations
Limited



Liverpool University Hospitals
NHS Foundation Trust

**ACCIDENT AND
EMERGENCY**

**COVID 19
REFURBISHMENT**



● = Locations of Flo-Motion Bi-Parting Type B100 doors

- Strip and Refurbishment to A+E ward bays
- Installation of new steelwork frame for AXIS doors
- Installation of B100 Flo-Motion Bi-Parting to P4+P5+P6
- New Flooring, recessed lighting + ventilation grills
- Installation of new IPS panels with automatic taps

Rendering by Olivia Dolan

**FLO-MOTION
BI-PARTING TYPE B100**



I.E.D. Installations Ltd, 16 Skyhawk Avenue, Dakota Business Park, Liverpool, L19 2QR
Office Tel: 0151 427 8500 • Procurement Tel: 0151 427 8900 • Main Fax: 0151 427 8600 • Engineering Fax: 0151 427 8400

16 Skyhawk Avenue | Dakota Business Park | Liverpool | L19 2QR

Facsimile: **0151 427 8600**